

Specification Sheets for 34½" Tall Montlake Vanities, Linen Lower & Uppers & Knee Drawers.

SPECIFICATION VARIANCES

Dimensions on finished vanities may vary slightly from those shown on these specification sheets due to variability in construction materials.

Our products are engineered to maintain close dimensional tolerances but variability in manufacturing materials can change dimensions slightly (normally within $\pm 1/8"$ but occasionally up to $\pm 3/16"$).

In most applications these slight variations will have no impact upon installation, appearance or function. However, when planning and finishing a space for a built in vanity, **do not frame or finish the space before measuring the actual cabinet!**

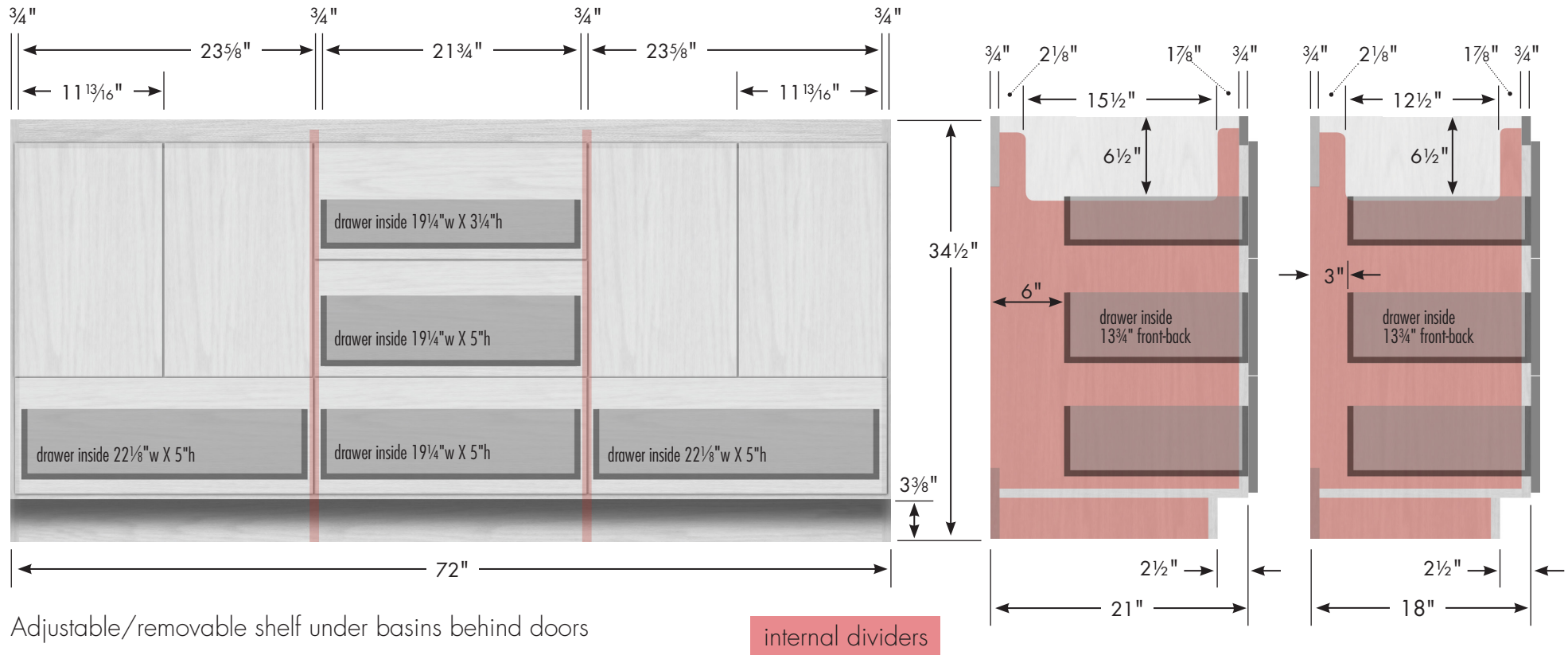
We can not be responsible for any expenses incurred as a result of the end user or contractor not following this guideline.

REV: 2018-07

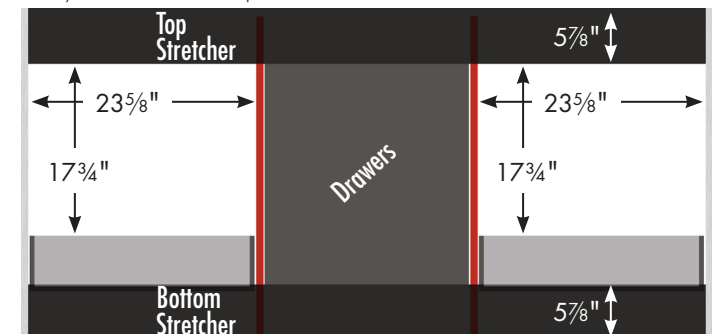
STRASSER

Specifications:

34½" tall Montlake Vanity
72" wide, double basin



Vanity back clear openings for plumbing
(may need to cut adjustable shelf)



72" Montlake Vanity

72" wide
34½" tall
21" or 18" front-to-back

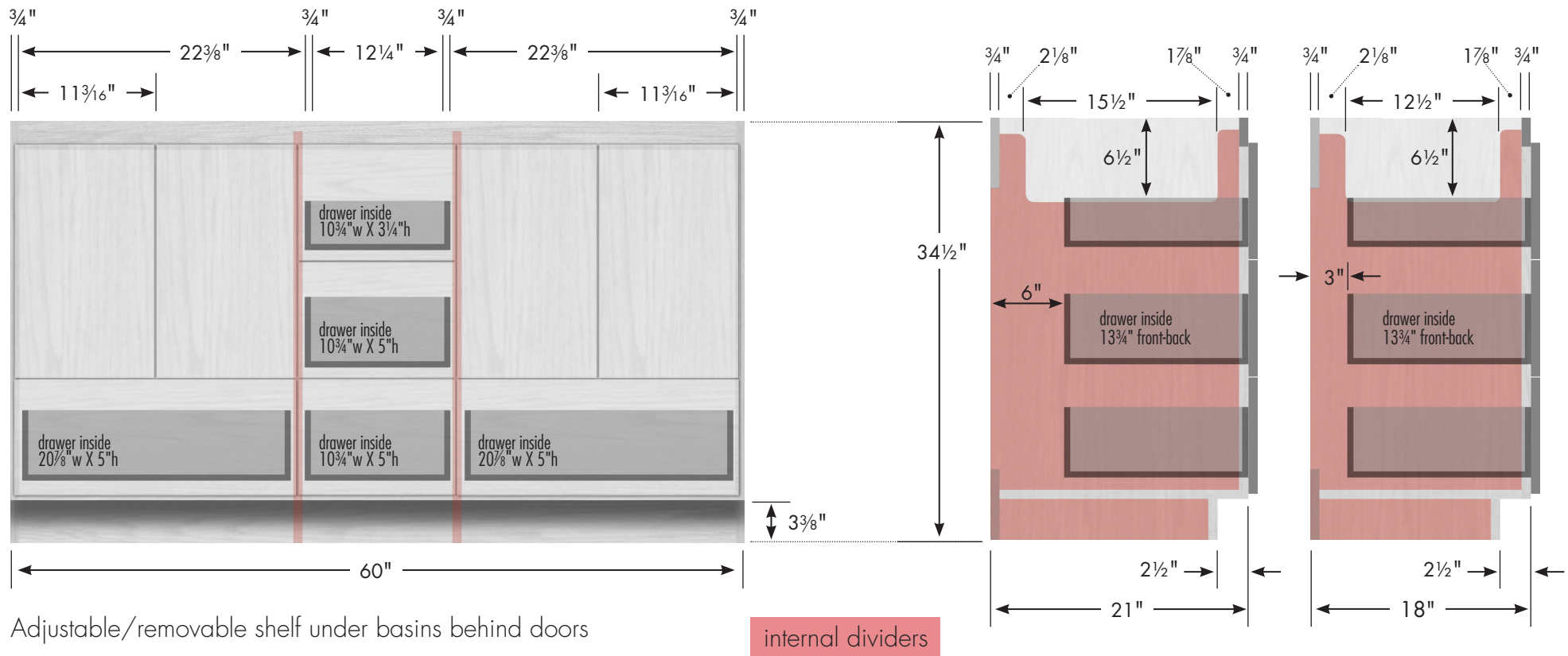


2

STRASSER

Specifications:

34½" tall Montlake Vanity
60" wide, double basin

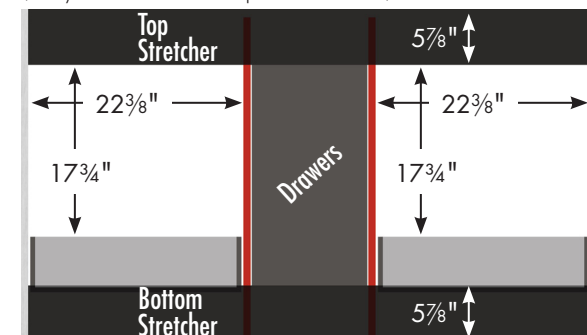


60" Montlake Vanity
Double Basin
60" wide
34½" tall
21" or 18" front-to-back



3

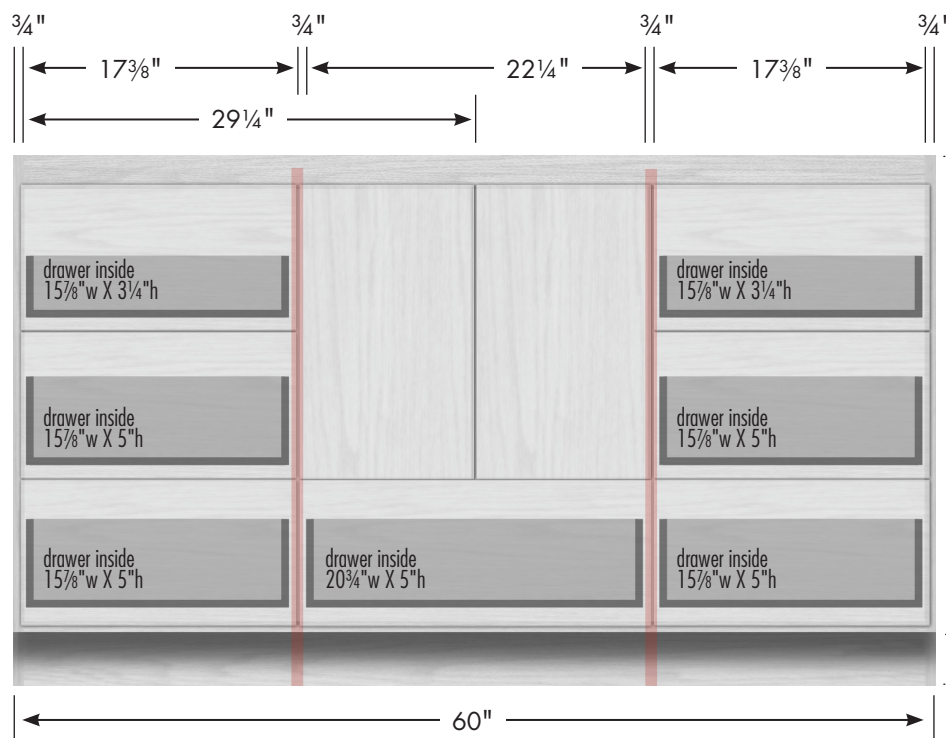
Vanity back clear openings for plumbing
(may need to cut adjustable shelf)



STRASSER

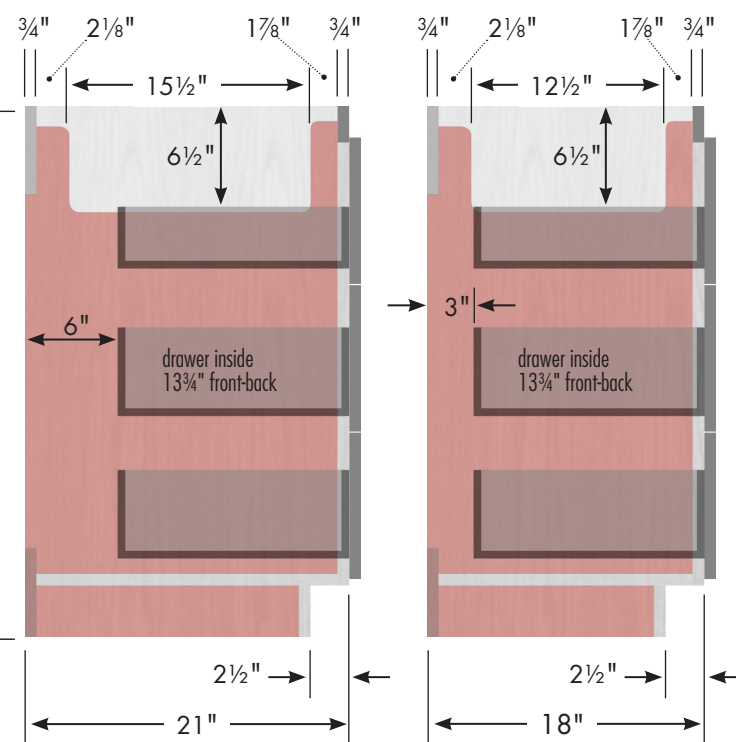
Specifications:

34½" tall Montlake Vanity
60" wide, center basin

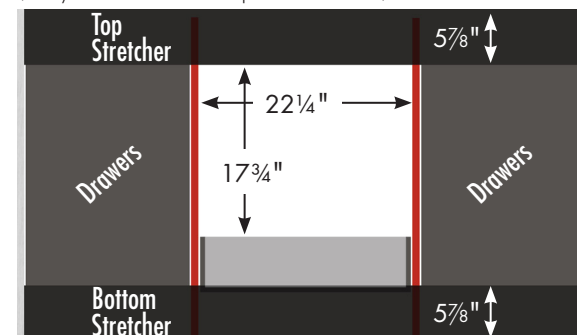


Adjustable/removable shelf under basin behind doors

internal dividers



Vanity back clear openings for plumbing
(may need to cut adjustable shelf)



60" Montlake Vanity
Center Basin
60" wide
34½" tall
21" or 18" front-to-back

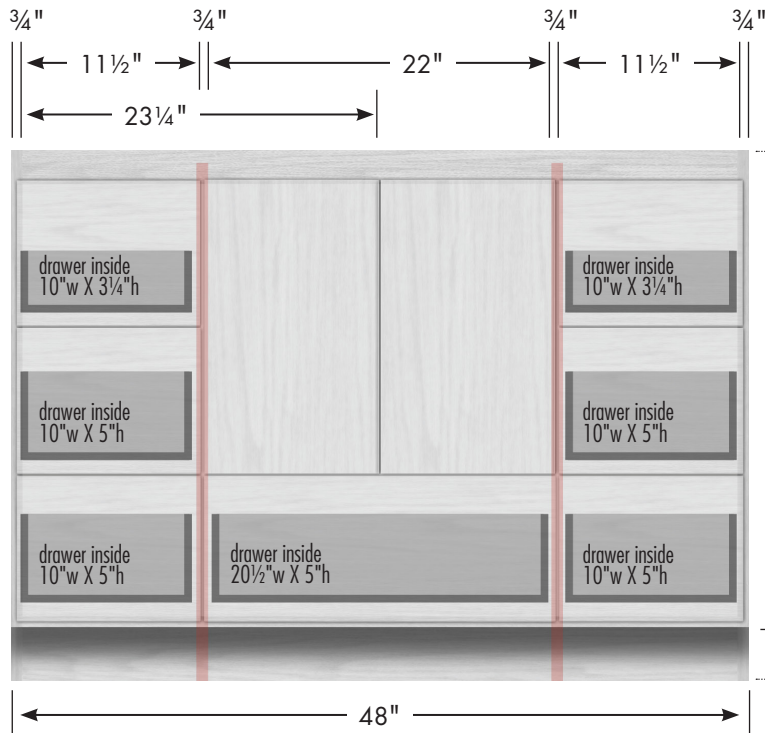


4

STRASSER

Specifications:

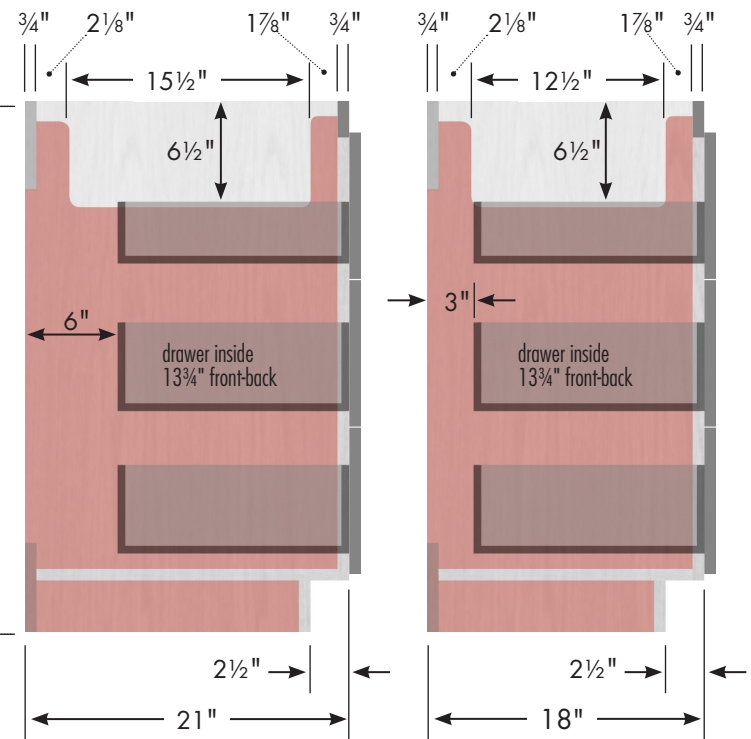
34½" tall Montlake Vanity
48" wide



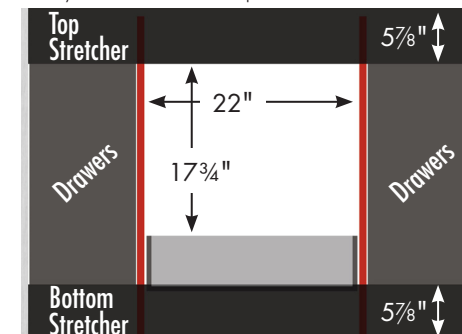
Adjustable/removable shelf under basin behind doors

3⅞"

internal dividers



Vanity back clear openings for plumbing
(may need to cut adjustable shelf)



48" Montlake Vanity

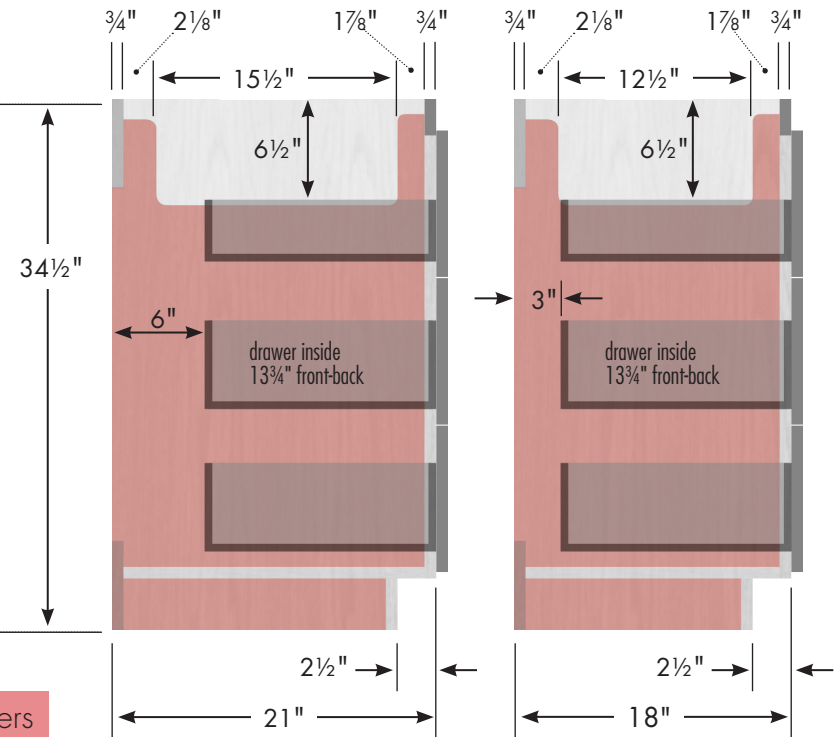
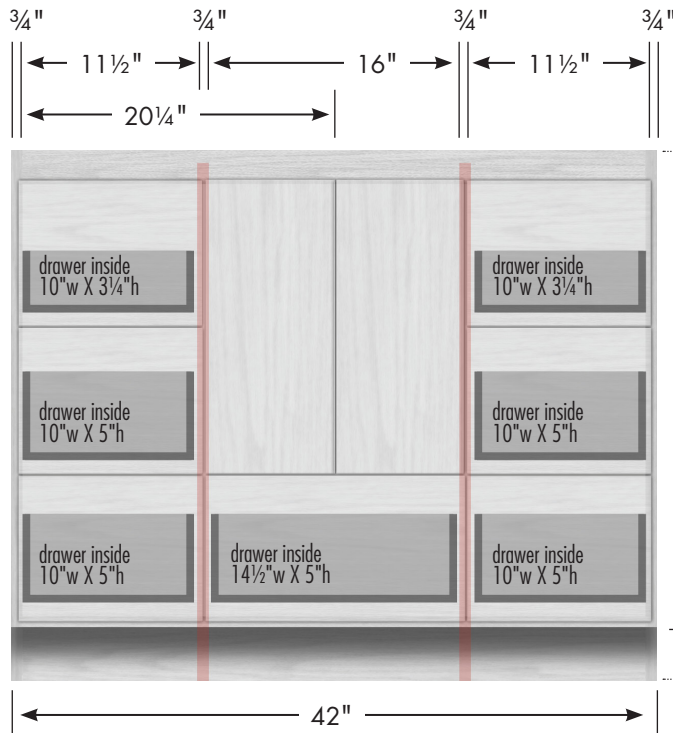
48" wide
34½" tall
21" or 18" front-to-back



STRASSER

Specifications:

34½" tall Montlake Vanity
42" wide

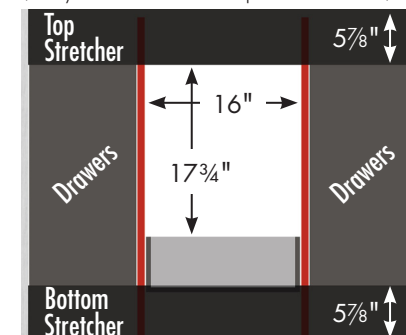


42" Montlake Vanity

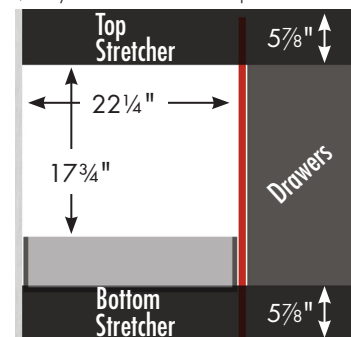
42" wide
34½" tall
21" or 18" front-to-back



Vanity back clear openings for plumbing
(may need to cut adjustable shelf)



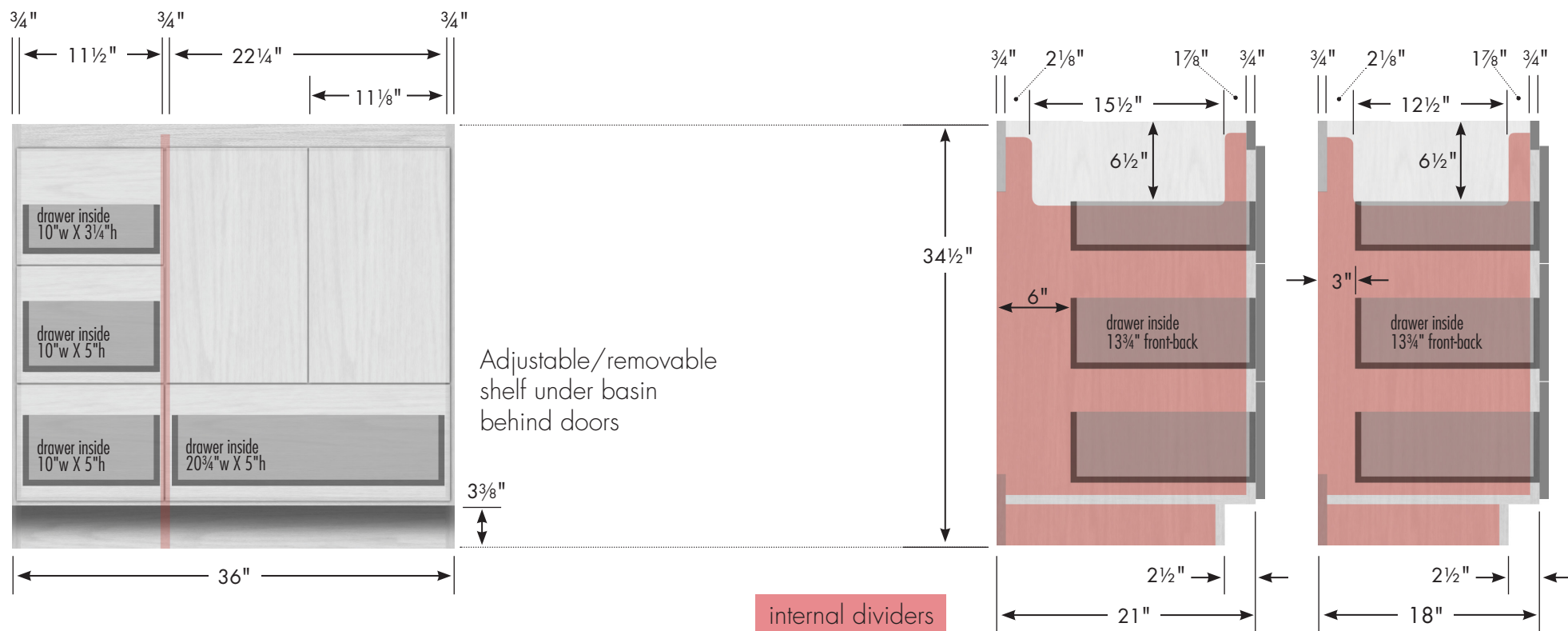
34½" tall Montlake Vanity
36" wide, drawers right



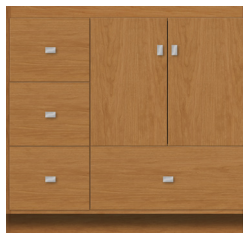
STRASSER

Specifications:

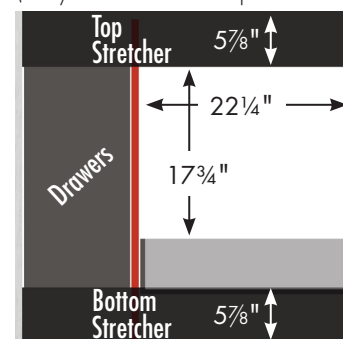
34½" tall Montlake Vanity
36" wide, drawers left



36" Montlake Vanity
Drawers Left
 36" wide
 34½" tall
 21" or 18" front-to-back



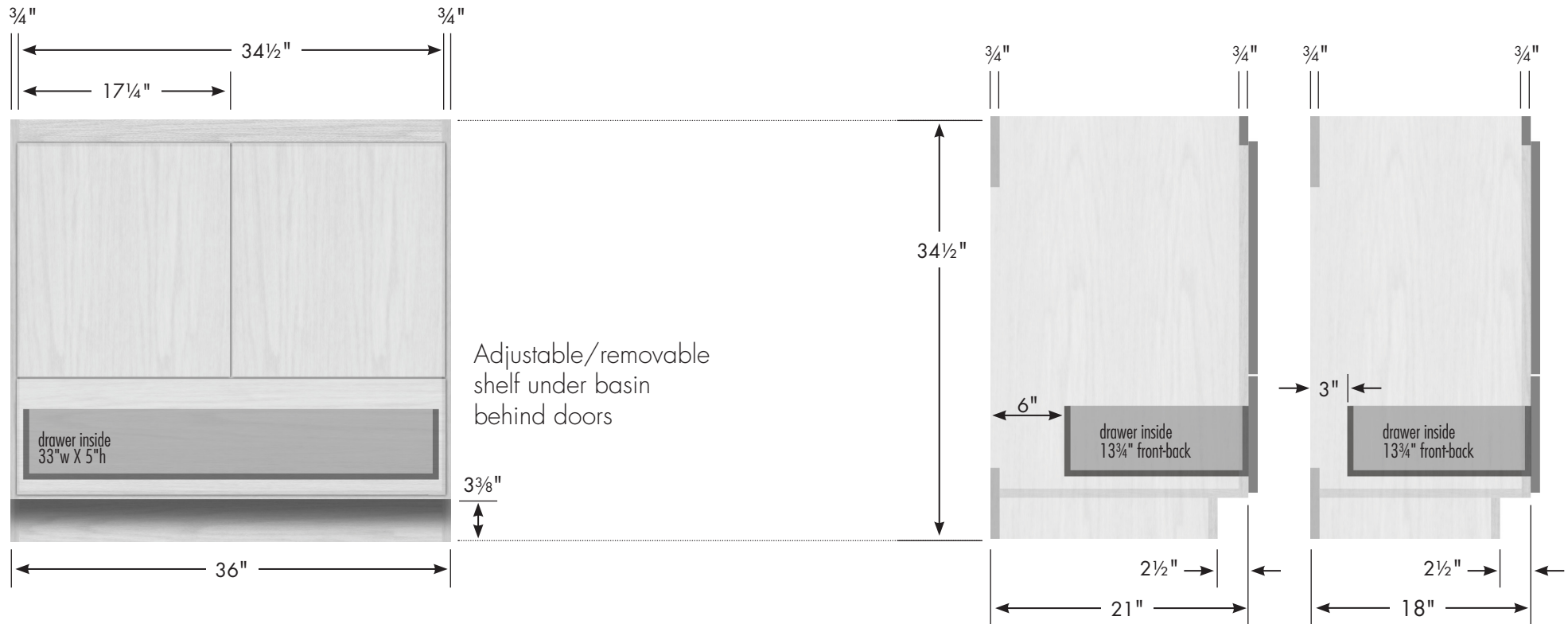
Vanity back clear openings for plumbing
 (may need to cut adjustable shelf)



STRASSER

Specifications:

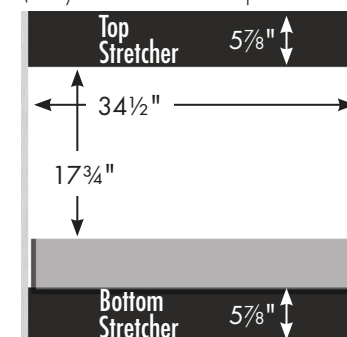
34½" tall Montlake Vanity
36" wide, no side drawers



36" Montlake Vanity
No Side Drawers
 36" wide
 34½" tall
 21" or 18" front-to-back



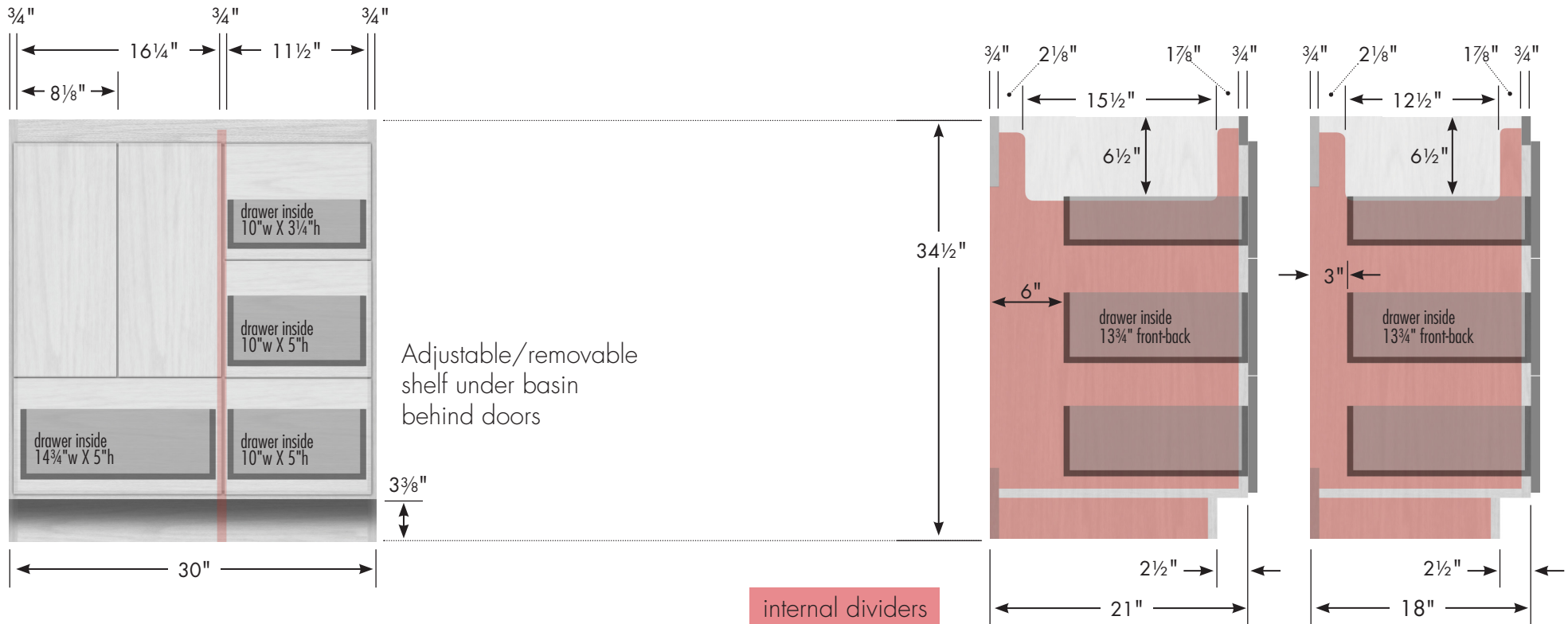
Vanity back clear openings for plumbing
 (may need to cut adjustable shelf)



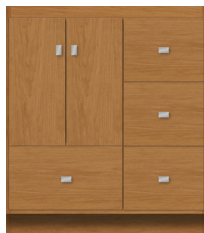
STRASSER

Specifications:

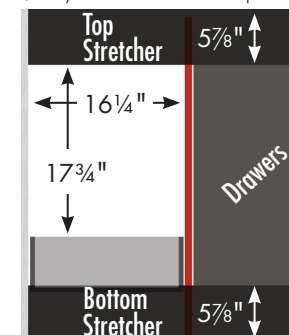
34½" tall Montlake Vanity
30" wide, drawers right



30" Montlake Vanity
Drawers Right
30" wide
34½" tall
21" or 18" front-to-back



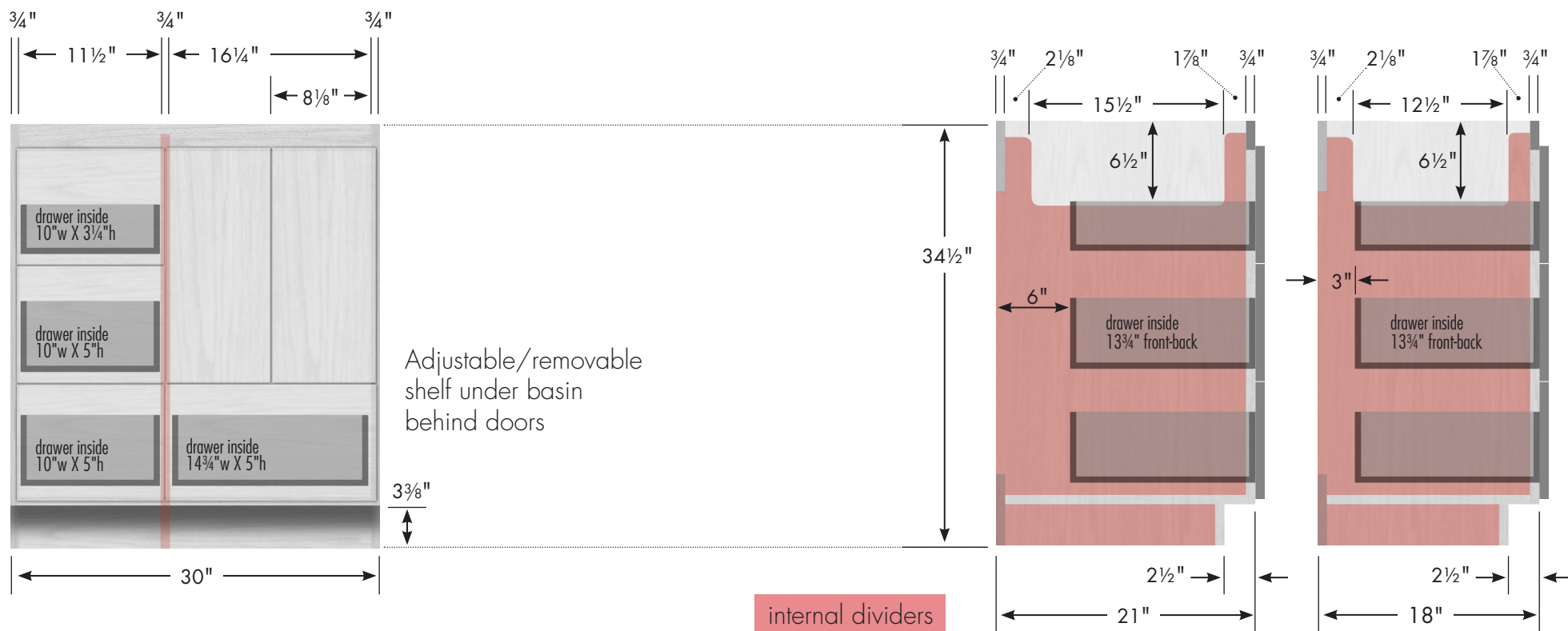
Vanity back clear openings for plumbing
(may need to cut adjustable shelf)



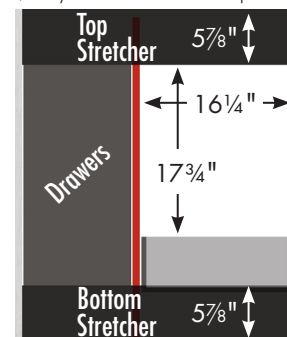
STRASSER

Specifications:

34½" tall Montlake Vanity
30" wide, drawers left



Vanity back clear openings for plumbing
 (may need to cut adjustable shelf)



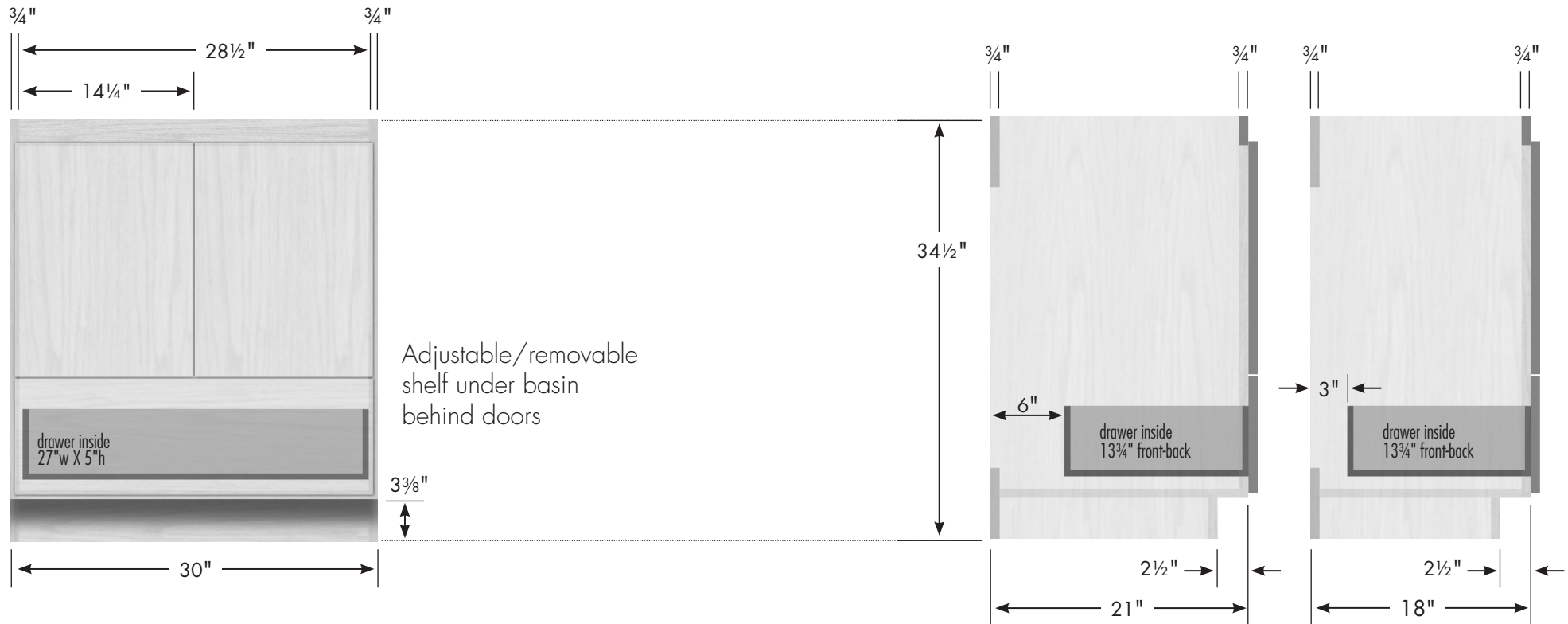
30" Montlake Vanity
Drawers Left
 30" wide
 34½" tall
 21" or 18" front-to-back



STRASSER

Specifications:

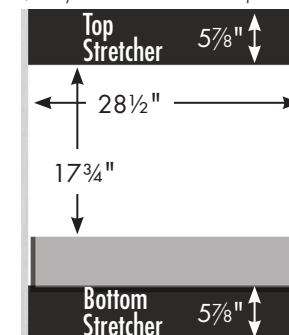
34½" tall Montlake
30" wide, no side drawers



30" Montlake Vanity
No Side Drawers
30" wide
34½" tall
21" or 18" front-to-back



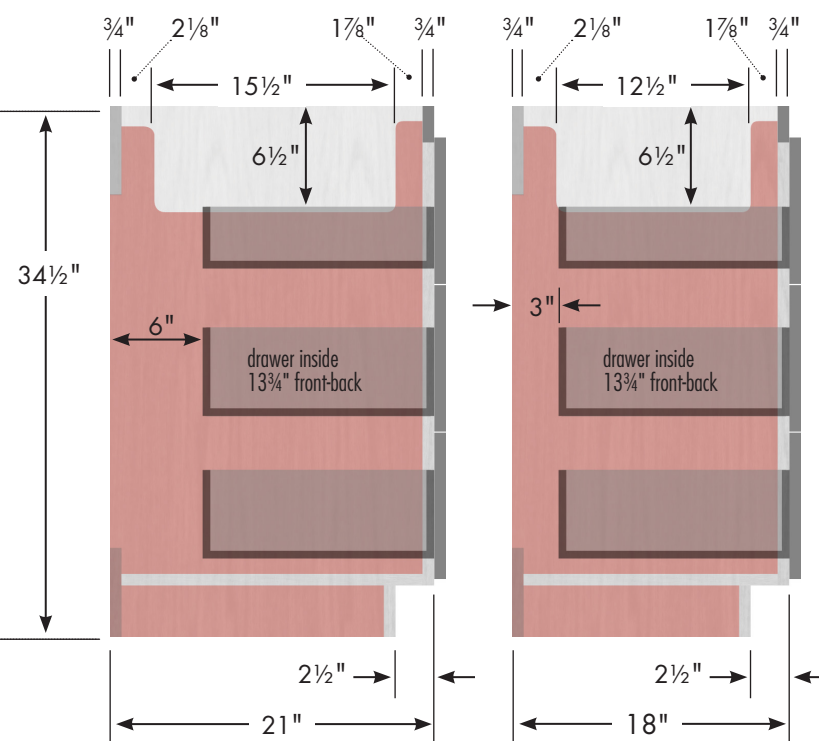
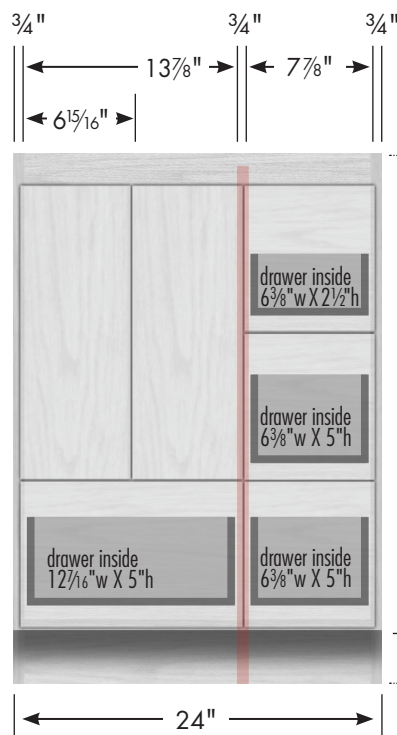
Vanity back clear openings for plumbing
(may need to cut adjustable shelf)



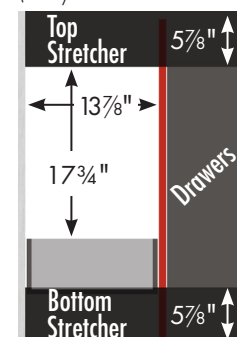
STRASSER

Specifications:

34½" tall Montlake Vanity
24" wide, drawers right



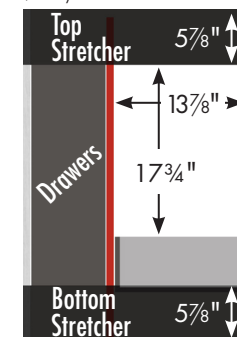
Vanity back clear openings for plumbing
(may need to cut adjustable shelf)



24" Montlake Vanity
Drawers Right
24" wide
34½" tall
21" or 18" front-to-back



34½" tall Montlake Vanity
24" wide, drawers left



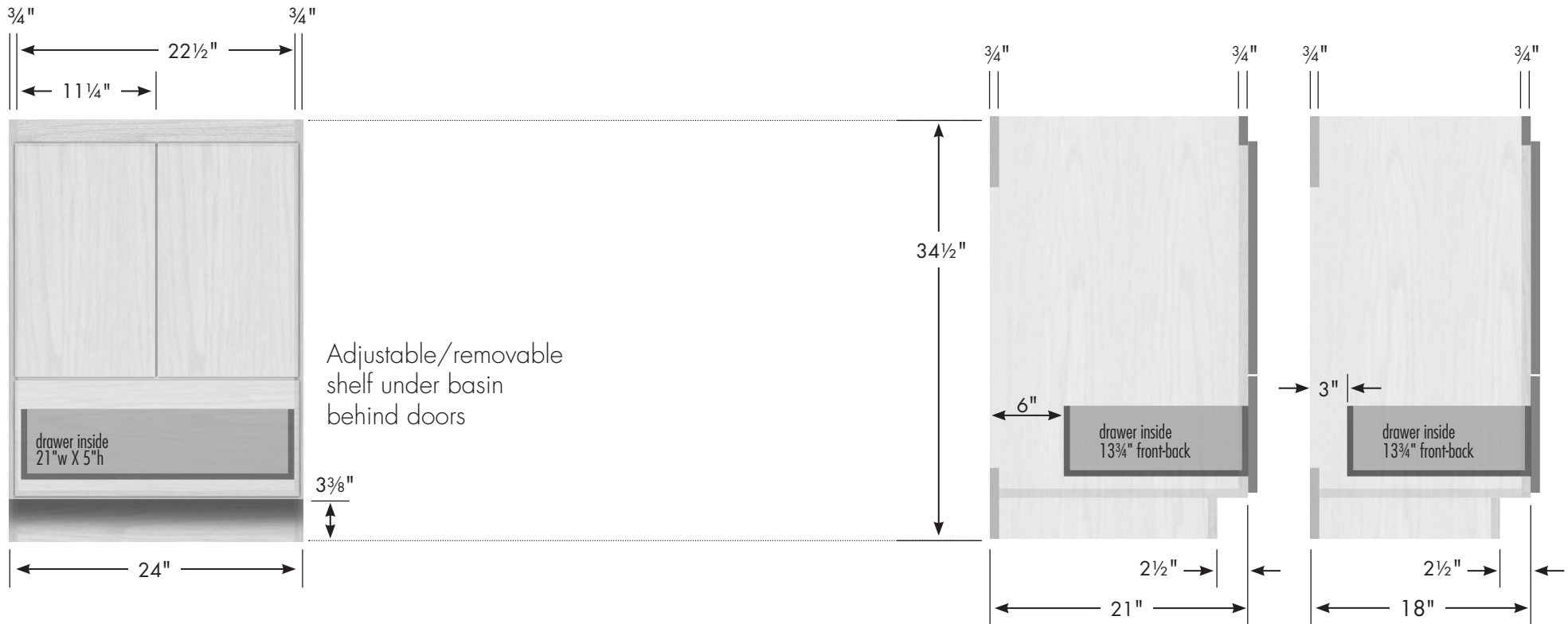
21" or 18" front-to-back



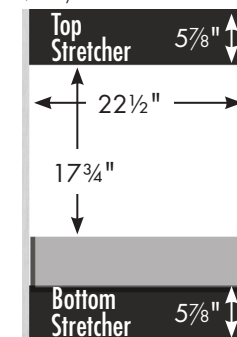
STRASSER

Specifications:

34½" tall Montlake Vanity/Linen Lower
24" wide, no side drawers



Vanity back clear openings for plumbing
(may need to cut adjustable shelf)



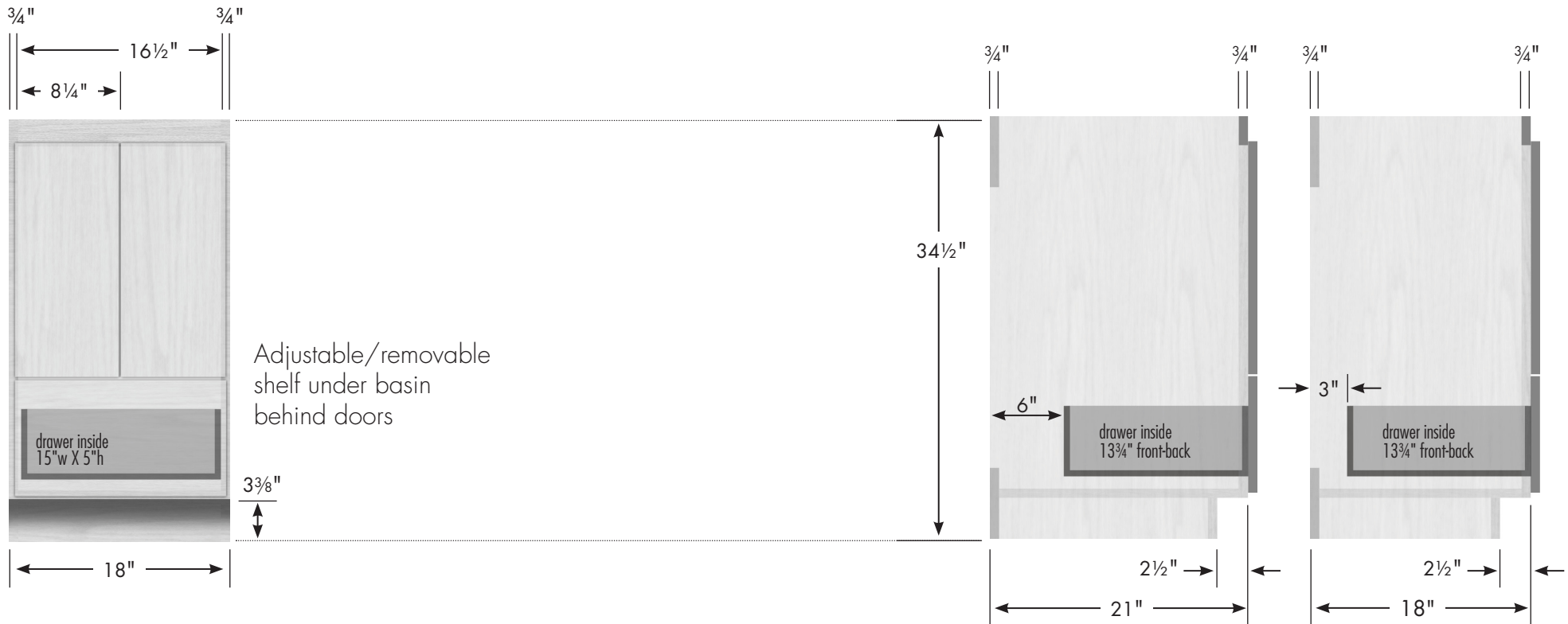
**24" Montlake Vanity/
Linen Lower**
No Side Drawers
24" wide
34½" tall
21" or 18" front-to-back



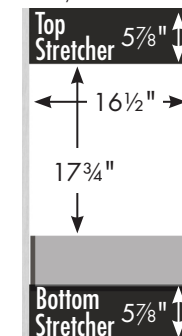
STRASSER

Specifications:

34½" tall Montlake Vanity/Linen Lower
18" wide, no side drawers

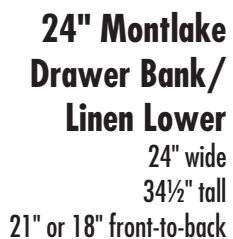


Vanity back clear openings for plumbing
 (may need to cut adjustable shelf)

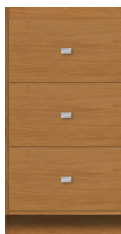


**18" Montlake Vanity/
 Linen Lower
 No Side Drawers**
 18" wide
 34½" tall
 21" or 18" front-to-back





**18" Montlake
Drawer Bank/
Linen Lower**
18" wide
34½" tall
21" or 18" front-to-back



**12" Montlake
Drawer Bank**
12" wide
34½" tall
21" or 18" front-to-back



STRASSER

Specifications:

Montlake Linen Upper
24" wide, 48"h



**24" Montlake
Linen Upper**
24" wide
48" tall
21" or 18" front-to-back
optional crown adds 1" to height



**18" Montlake
Linen Upper**
18" wide
48" tall
21" or 18" front-to-back
optional crown adds 1" to height



18

SPECIAL NOTE

Serious or fatal crushing injuries can occur from a linen cabinet tipping over.

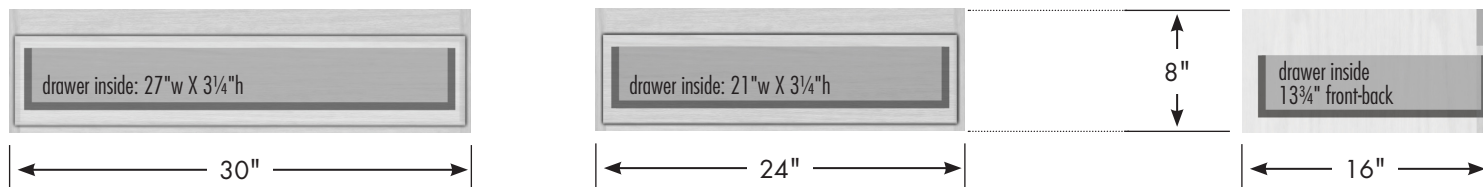
To help prevent tipover:

- Place heaviest items in the lower drawers
- Do not place heavy objects on top of this product
- Never allow children to climb or hang on drawers, doors or shelves
- Do not open more than one drawer at a time.

Units **MUST** be securely fastened to the wall.

- If you are not familiar with loads, holding materials, proper fastening devices/techniques; consult a professional.

Manufacturer assumes no liability for improper installation or excessive loads placed on screws, brackets or straps.



**30" Montlake
Knee Drawer**
30" wide,
8" tall
16" front-to-back



**24" Montlake
Knee Drawer**
24" wide,
8" tall
16" front-to-back

