

Specification Sheets for Newhalem Vanities, Linen & Mirror.

SPECIFICATION VARIANCES

Dimensions on finished vanities may vary slightly from those shown on these specification sheets due to variability in construction materials.

Our products are engineered to maintain close dimensional tolerances but variability in manufacturing materials can change dimensions slightly (normally within $\pm 1/8$ " but occasionally up to $\pm 3/16$ ").

In most applications these slight variations will have no impact upon installation, appearance or function. However, when planning and finishing a space for a built in vanity, **do not frame or finish the space before measuring the actual cabinet!**

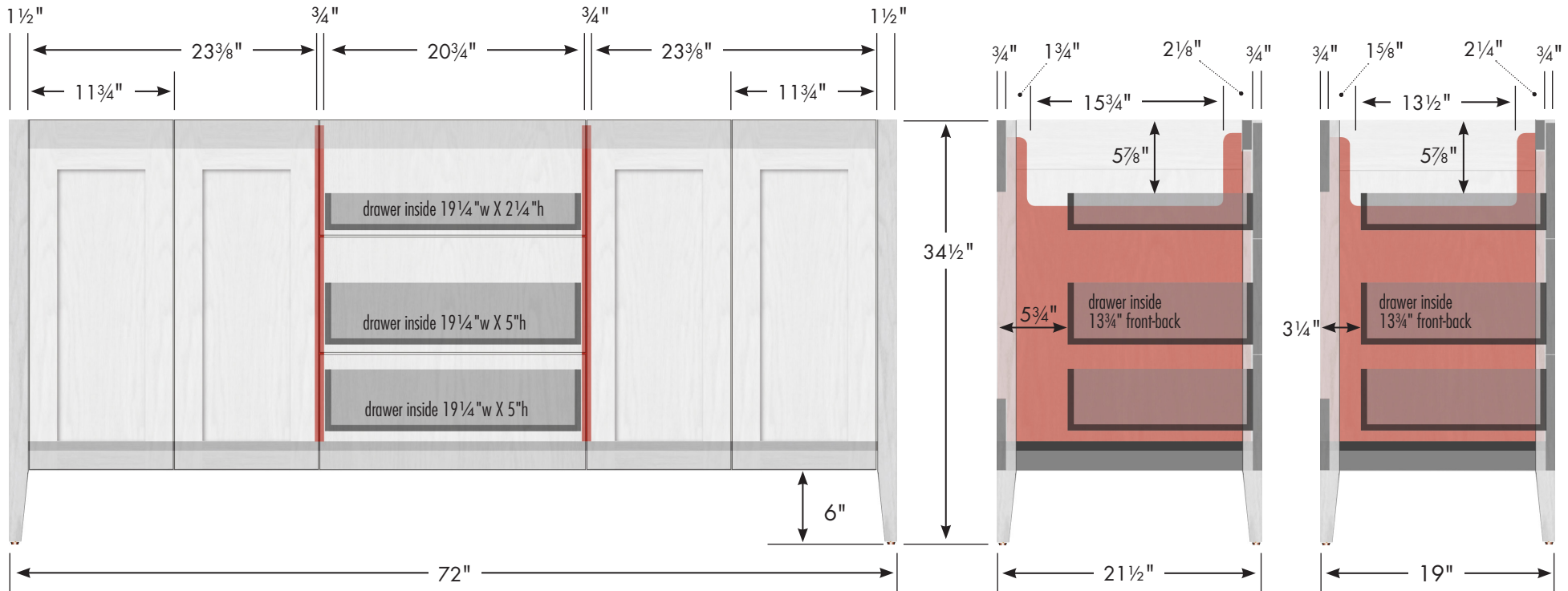
We can not be responsible for any expenses incurred as a result of the end user or contractor not following this guideline.

REV: 2018-07

STRASSER

Specifications:

Newhalem Vanity
72"w, 34½"h, double basin



Adjustable/removable shelf under basins behind doors

internal dividers

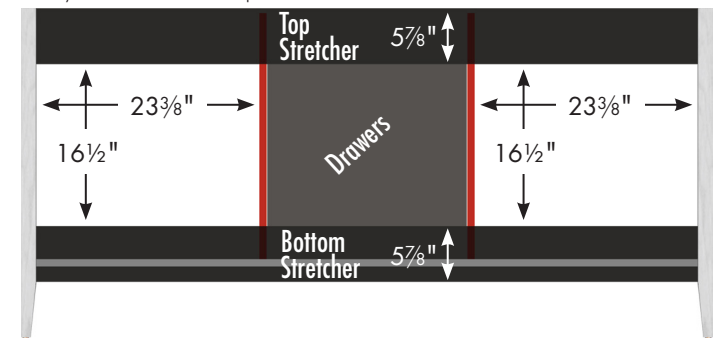
Vanity back clear openings for plumbing
(may need to cut adjustable shelf)

72" Newhalem Vanity

72" wide
34½" tall
21½" or 19" front-to-back



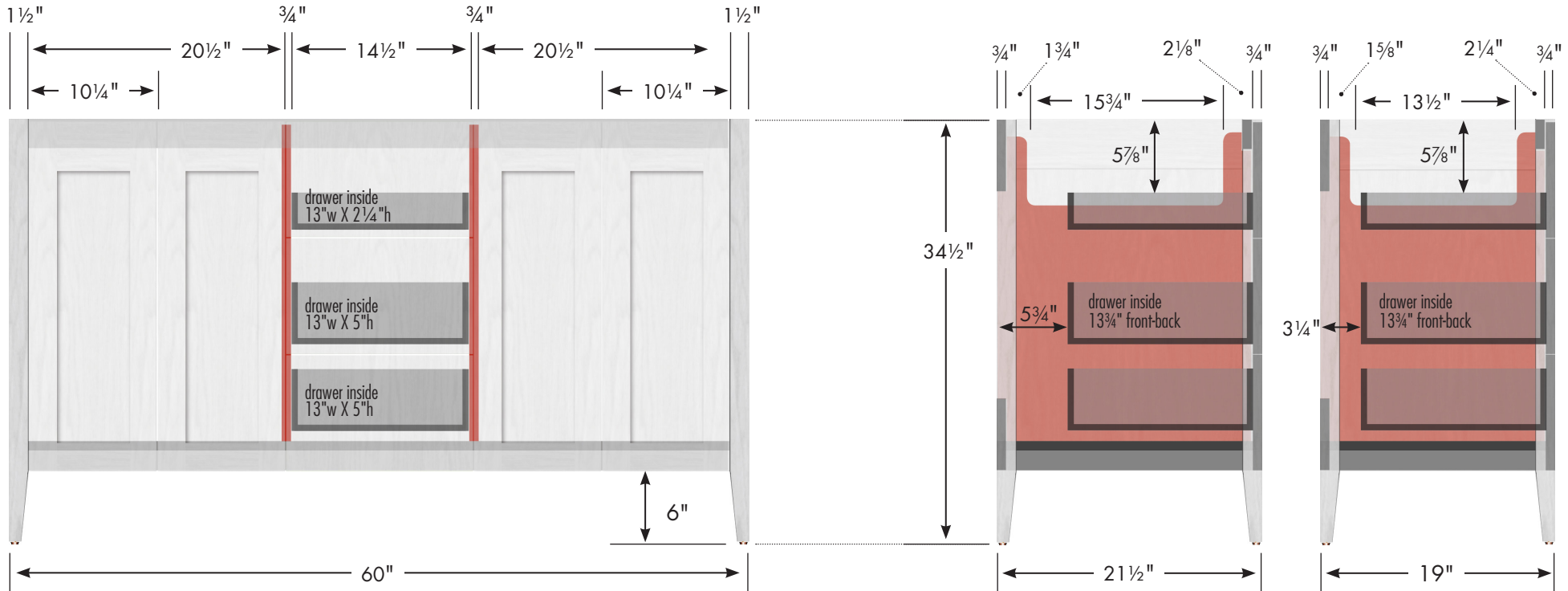
2



STRASSER

Specifications:

Newhalem Vanity
60"w, 34½"h, double basin

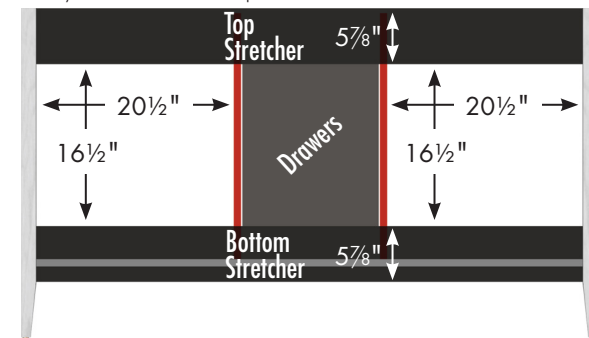


Adjustable/removable shelf under basins behind doors

internal dividers

Vanity back clear openings for plumbing
(may need to cut adjustable shelf)

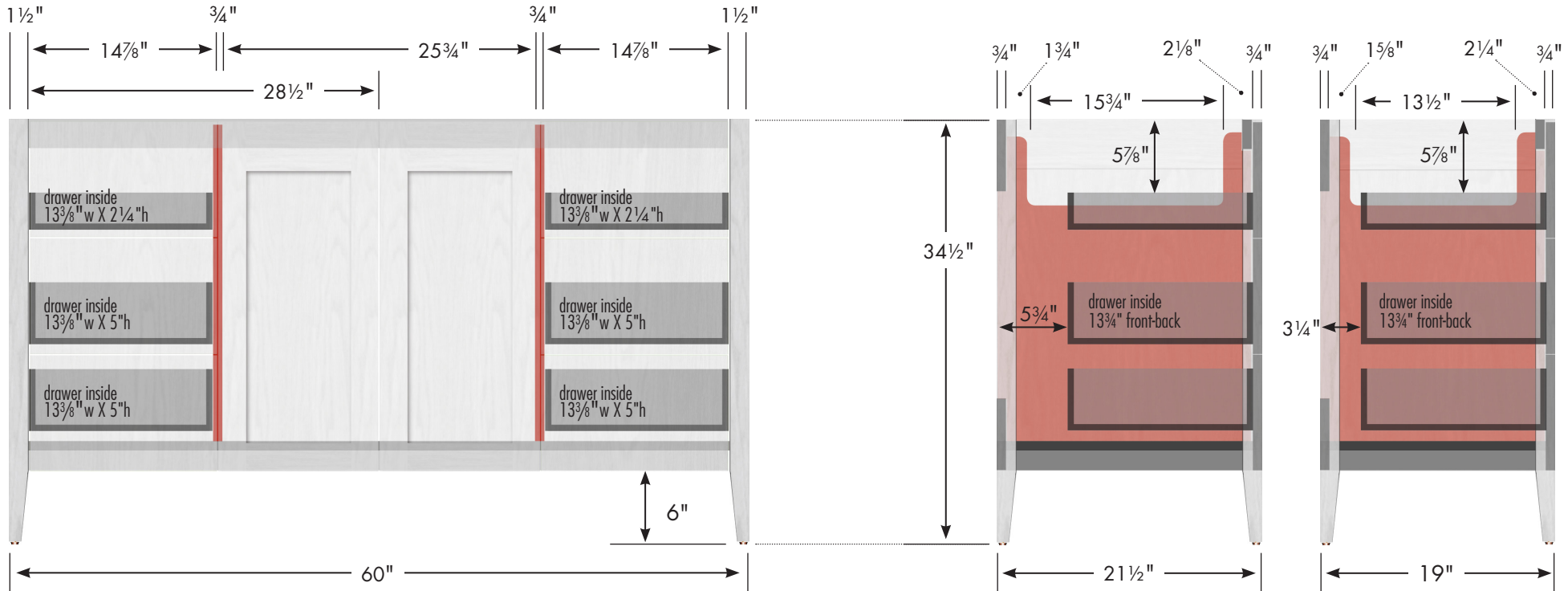
60" Newhalem Vanity
Double Basin
60" wide
34½" tall
21½" or 19" front-to-back



STRASSER

Specifications:

Newhalem Vanity
60"w, 34½"h, center basin

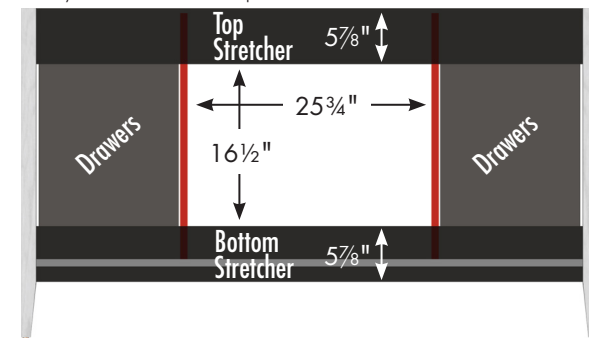


Adjustable/removable shelf under basins behind doors

internal dividers

Vanity back clear openings for plumbing
(may need to cut adjustable shelf)

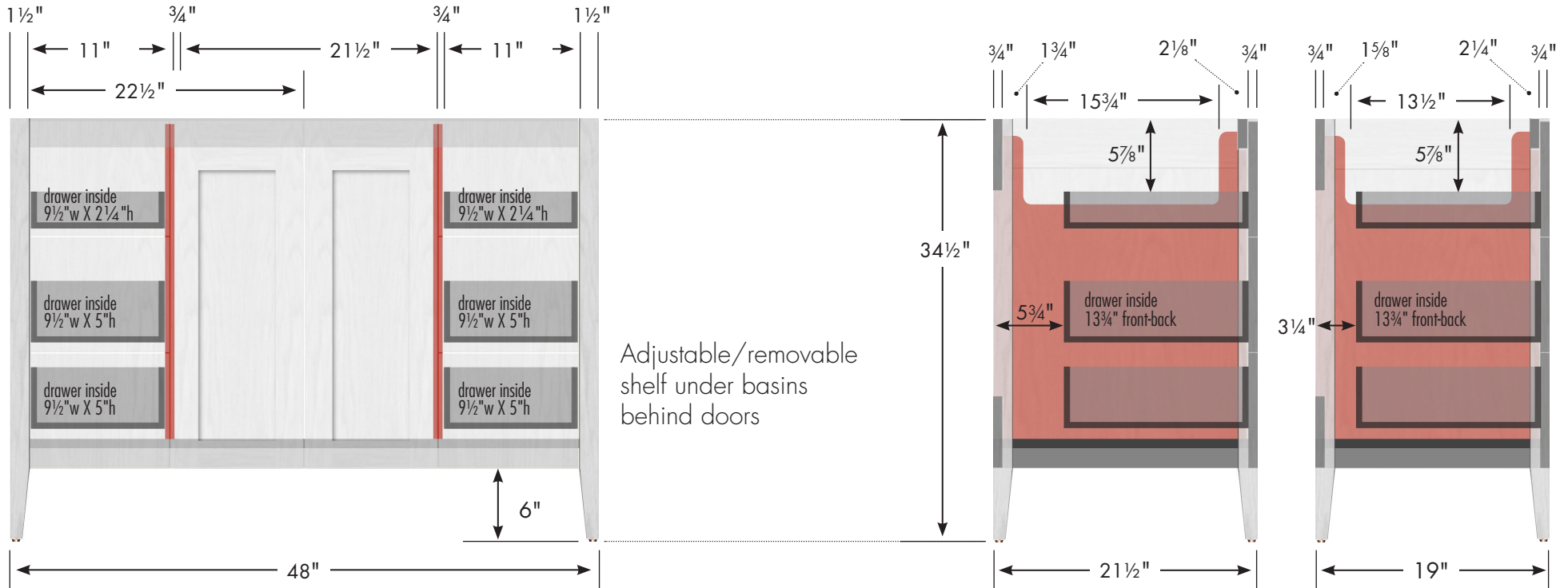
60" Newhalem Vanity
Center Basin
60" wide
34½" tall
21½" or 19" front-to-back



STRASSER

Specifications:

Newhalem Vanity
48" w, 34½" h



Adjustable/removable shelf under basins behind doors

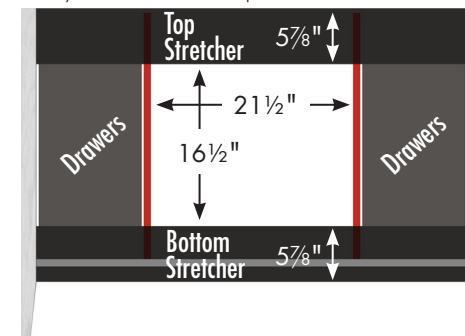
internal dividers

48" Newhalem Vanity

48" wide
34½" tall
21½" or 19" front-to-back



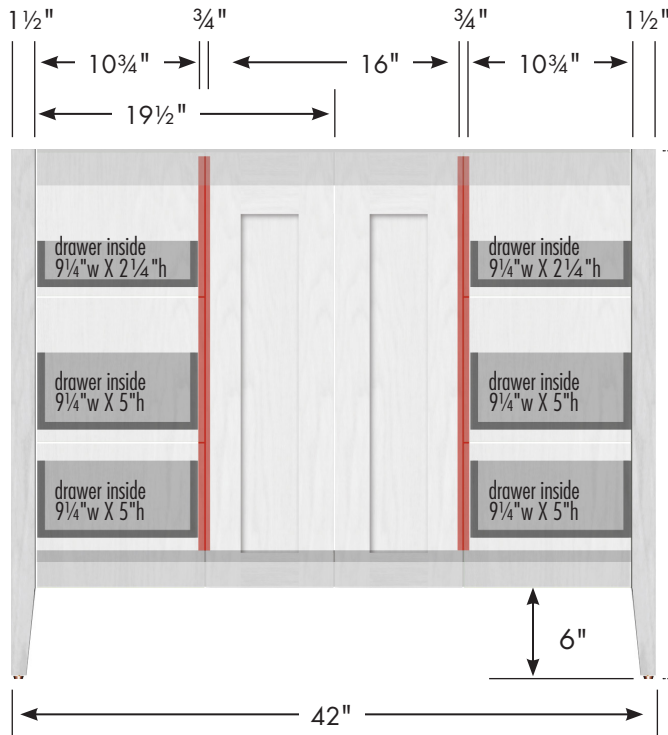
Vanity back clear openings for plumbing
(may need to cut adjustable shelf)



STRASSER

Specifications:

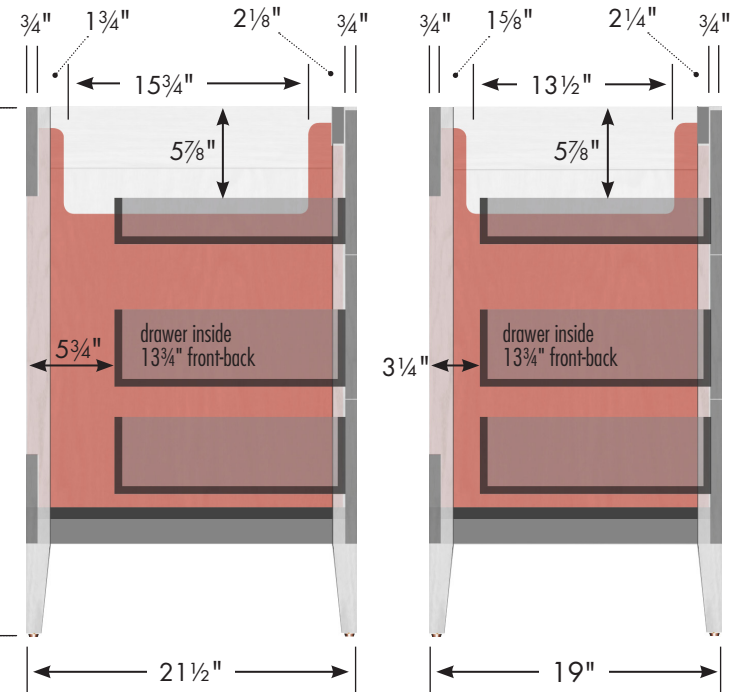
Newhalem Vanity
42" w, 34½" h



Adjustable/removable shelf under basins behind doors

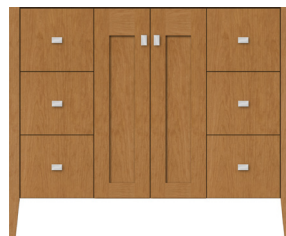
34½"

internal dividers

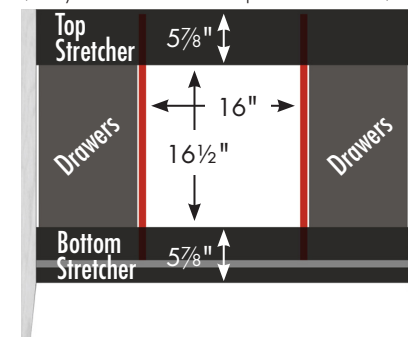


42" Newhalem Vanity

42" wide
34½" tall
21½" or 19" front-to-back



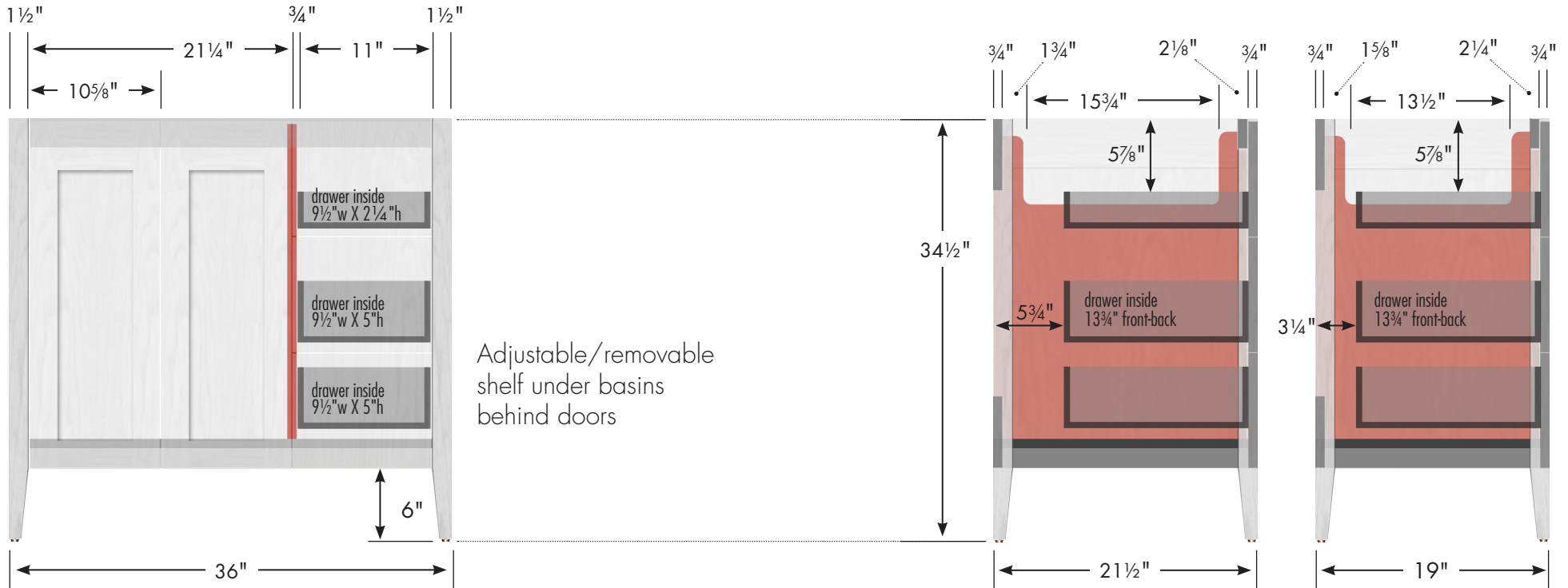
Vanity back clear openings for plumbing
(may need to cut adjustable shelf)



STRASSER

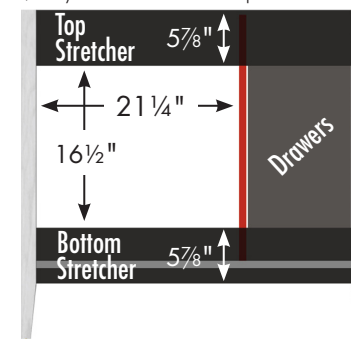
Specifications:

Newhalem Vanity
36" w, 34½" h, drawers right



internal dividers

Vanity back clear openings for plumbing
 (may need to cut adjustable shelf)



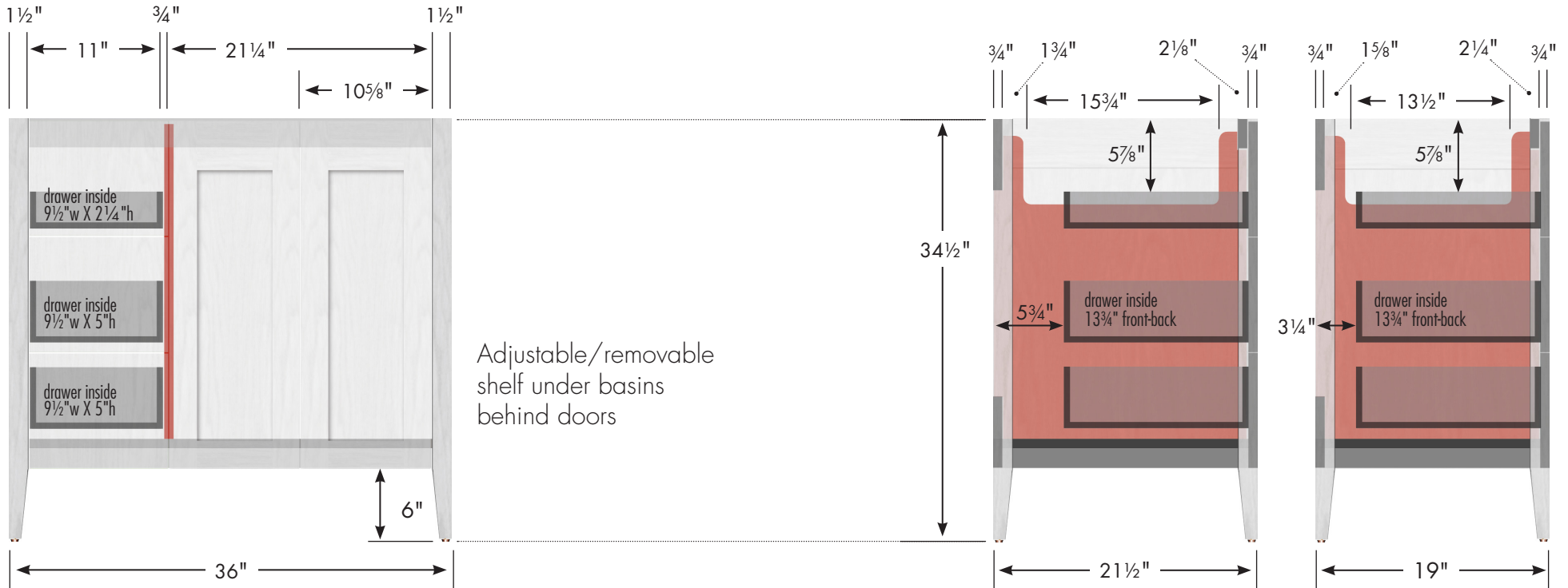
36" Newhalem Vanity
Drawers Right
 36" wide
 34½" tall
 21½" or 19" front-to-back



STRASSER

Specifications:

Newhalem Vanity
36" w, 34½" h, drawers left



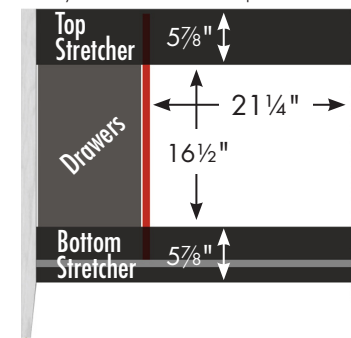
Adjustable/removable shelf under basins behind doors

internal dividers

36" Newhalem Vanity
Drawers Left
 36" wide
 34½" tall
 21½" or 19" front-to-back

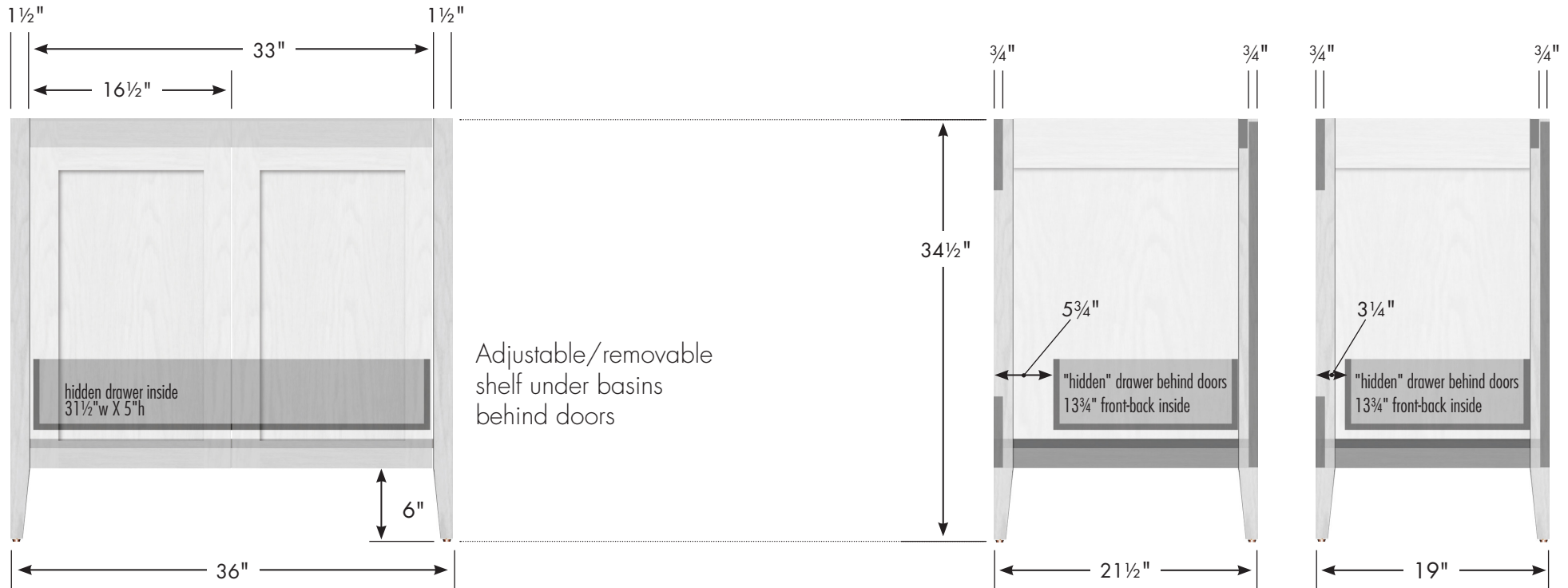


Vanity back clear openings for plumbing
 (may need to cut adjustable shelf)



STRASSER

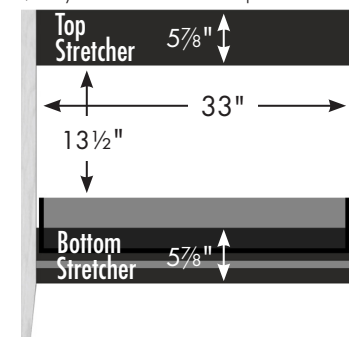
Newhalem Vanity
36" w, 34½" h, no side drawers



36" Newhalem Vanity
No Side Drawers
 36" wide
 34½" tall
 21½" or 19" front-to-back



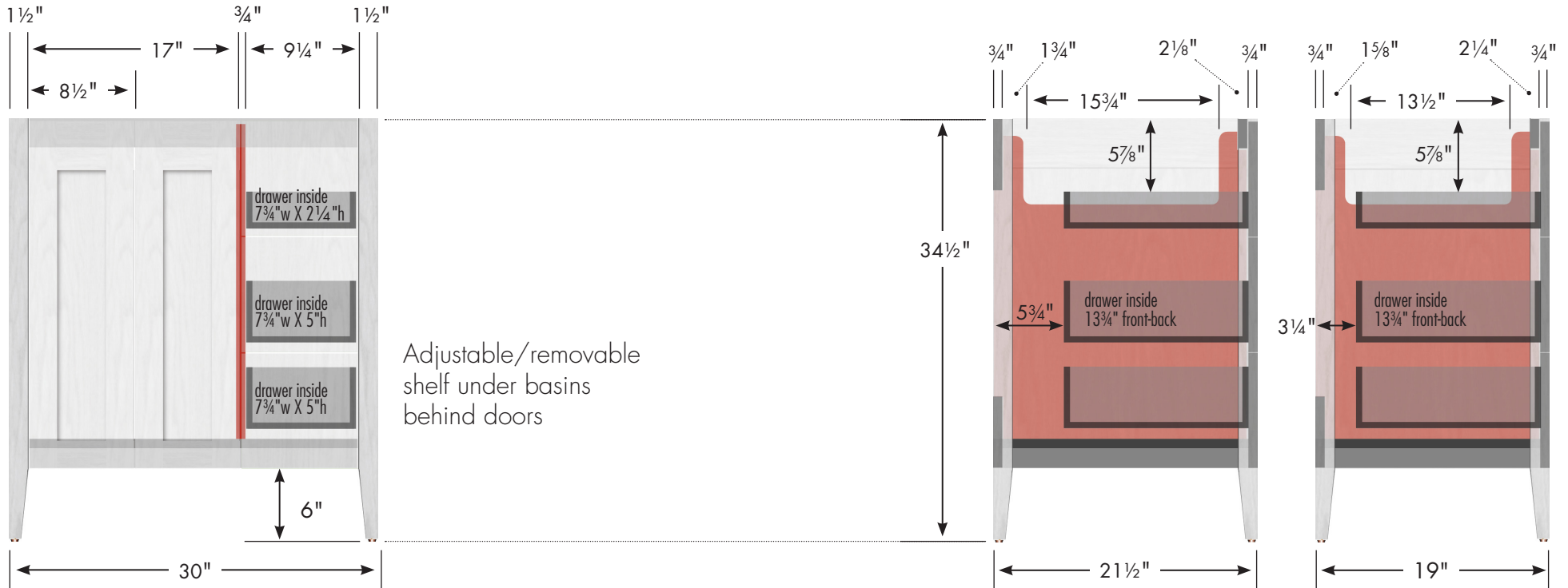
Vanity back clear openings for plumbing
 (may need to cut adjustable shelf)



STRASSER

Specifications:

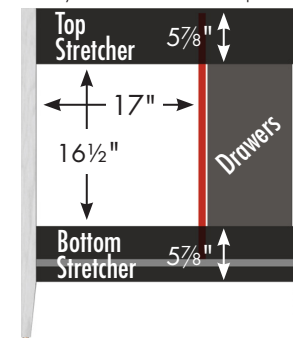
Newhalem Vanity
30" w, 34½" h, drawers right



internal dividers

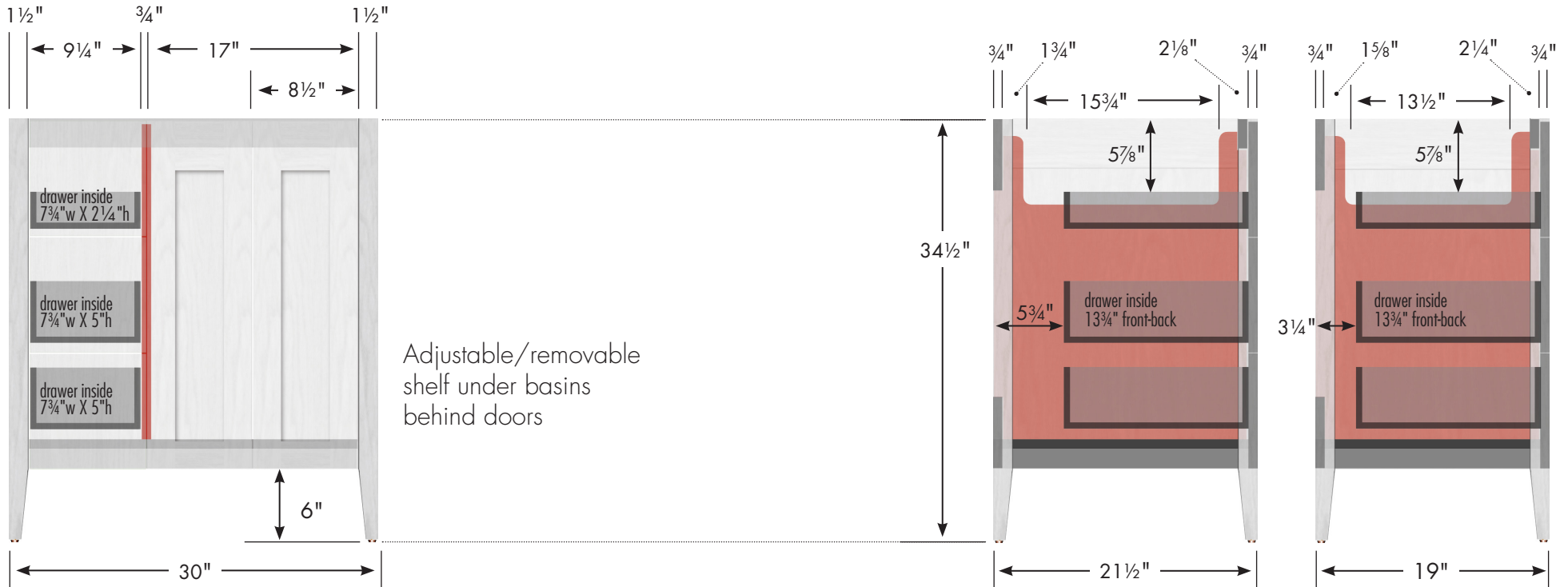
Vanity back clear openings for plumbing
 (may need to cut adjustable shelf)

30" Newhalem Vanity
Drawers Right
 30" wide
 34½" tall
 21½" or 19" front-to-back



STRASSER

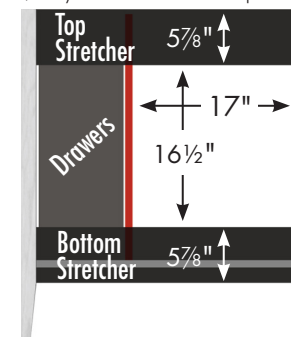
Newhalem Vanity 30" w, 34½" h, drawers left



internal dividers

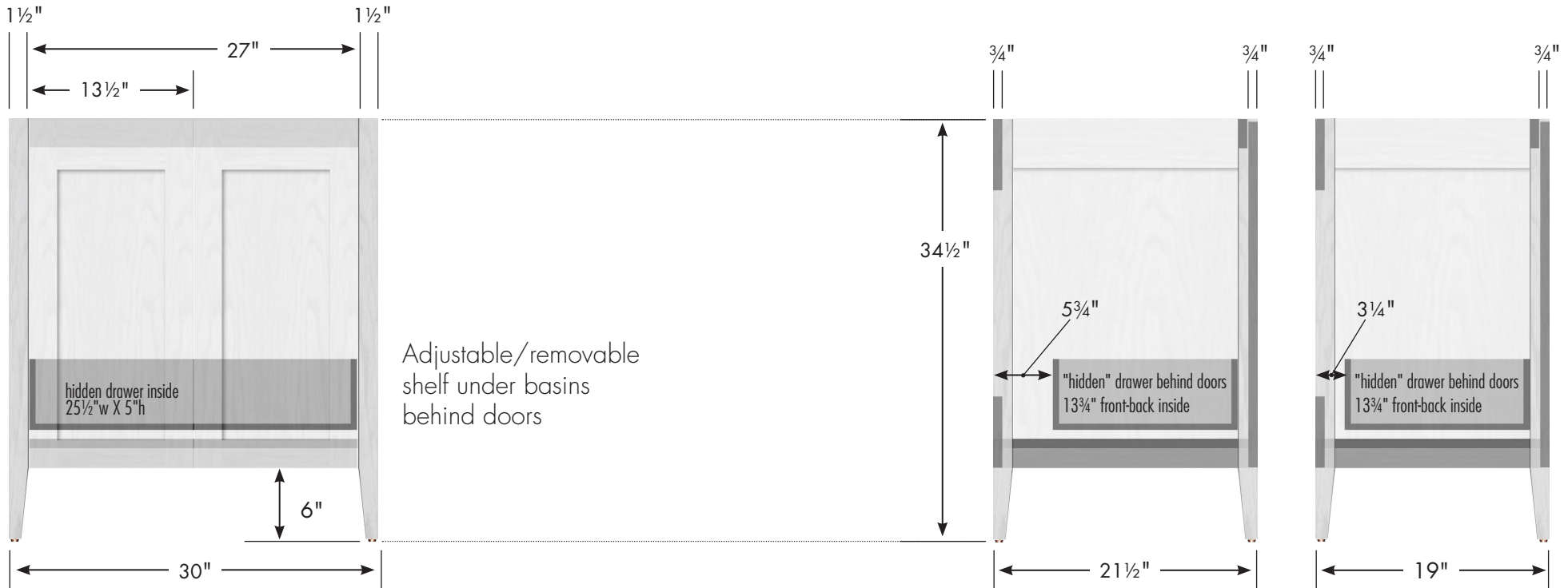
Vanity back clear openings for plumbing
(may need to cut adjustable shelf)

**30" Newhalem Vanity
Drawers Left**
30" wide
34½" tall
21½" or 19" front-to-back



STRASSER

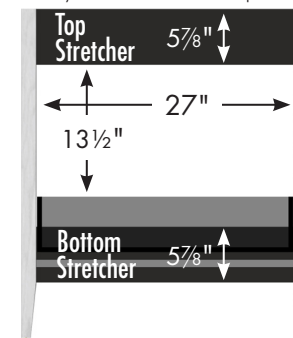
Newhalem Vanity
30" w, 34½" h, no side drawers



30" Newhalem Vanity
No Side Drawers
 30" wide
 34½" tall
 21½" or 19" front-to-back



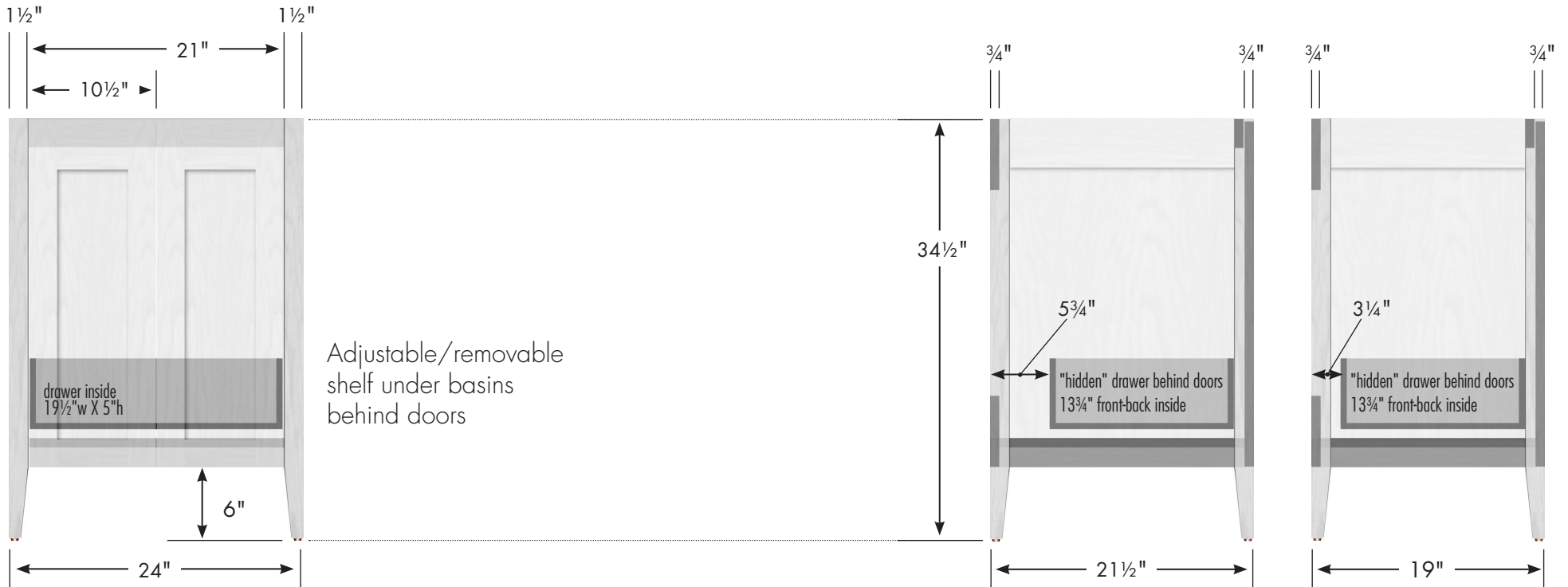
Vanity back clear openings for plumbing
 (may need to cut adjustable shelf)



STRASSER

Specifications:

Newhalem Vanity
24" w, 34½" h

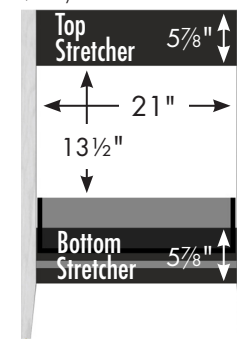


24" Newhalem Vanity

24" wide
34½" tall
21½" or 19" front-to-back



Vanity back clear openings for plumbing
(may need to cut adjustable shelf)



STRASSER

Specifications:

Newhalem Linen
19½"w, 70"h

SPECIAL NOTE

Serious or fatal crushing injuries can occur from a linen cabinet tipping over.

To help prevent tipover:

- Install provided tipover restraint
- Place heaviest items in the lower drawers
- Do not place heavy objects on top of this product
- Never allow children to climb or hang on drawers, doors or shelves
- Do not open more than one drawer at a time.

Use of tipover restraints may only reduce, but not eliminate, the risk of tipover.

We supply attachment hardware with your order but some applications may need different/additional hardware. Manufacturer assumes no liability for improper installation or excessive loads placed on screws, brackets or straps.

19½" Newhalem Linen

19½" wide
70" tall
21½" or 19" front-to-back

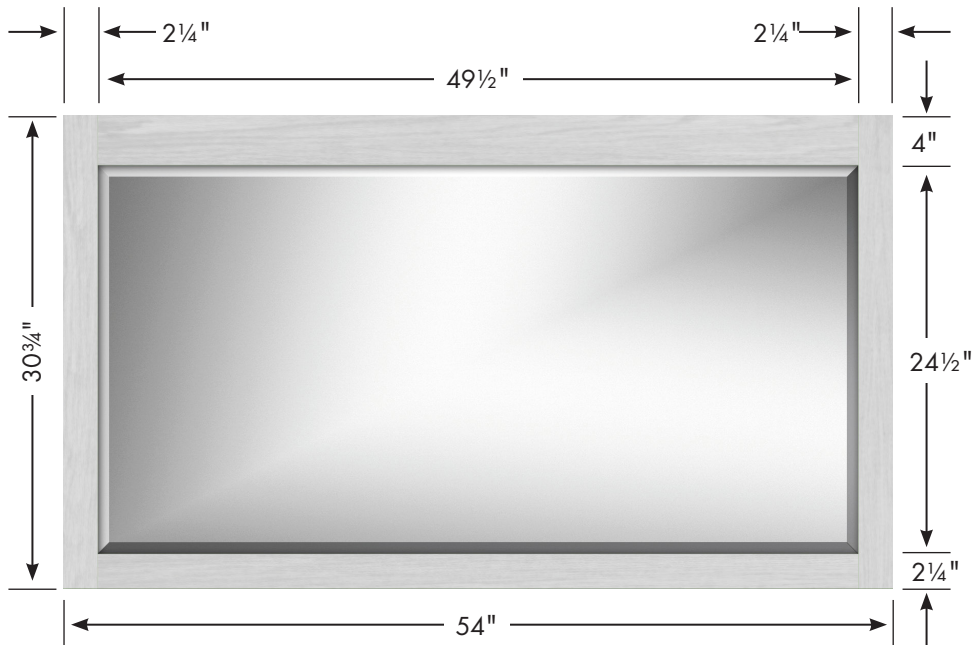


14

STRASSER

Specifications:

Newhalem Mirror
54" w, 30³/₄" h



SPECIAL NOTE

These large mirrors with ¹/₄" plate glass are especially heavy and require careful consideration and execution in hanging.

We include attached cleats but you may need to re-install them so that spacing will allow attachment to structural wall studs.

Consult with a professional if you are not familiar with construction practices.

Newhalem Mirror
54" wide
30³/₄" tall

