

Specification Sheets for Ravenna View Vanities & Linen.

SPECIFICATION VARIANCES

Dimensions on finished vanities may vary slightly from those shown on these specification sheets due to variability in construction materials.

Our products are engineered to maintain close dimensional tolerances but variability in manufacturing materials can change dimensions slightly (normally within $\pm 1/8"$ but occasionally up to $\pm 3/16"$).

In most applications these slight variations will have no impact upon installation, appearance or function. However, when planning and finishing a space for a built in vanity, **do not frame or finish the space before measuring the actual cabinet!**

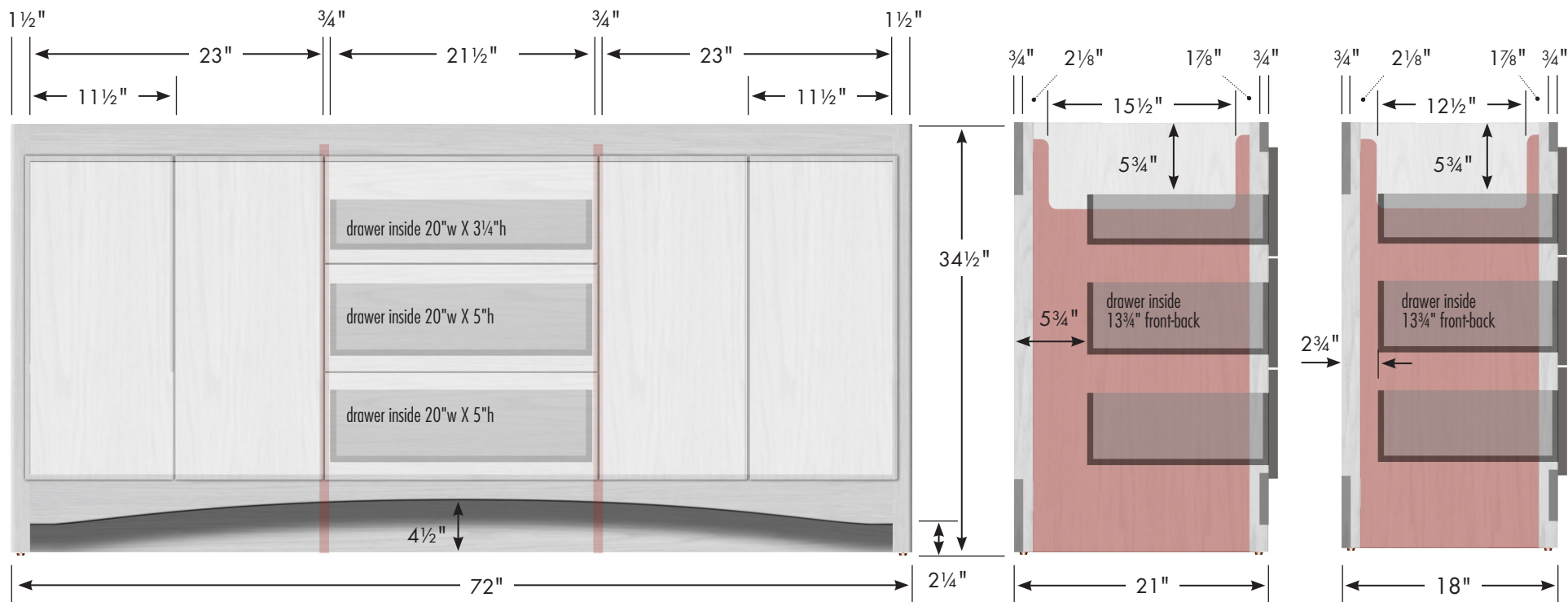
We can not be responsible for any expenses incurred as a result of the end user or contractor not following this guideline.

REV: 2019-08

STRASSER

Specifications:

Ravenna View Vanity
72"w, 34½"h, double basin

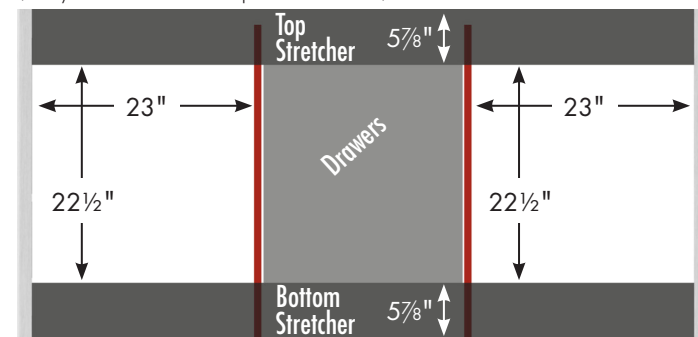


Adjustable/removable shelf under basins behind doors

internal dividers

Vanity back clear openings for plumbing
(may need to cut adjustable shelf)

72" wide, 34½" tall
21" or 18" front-to-back

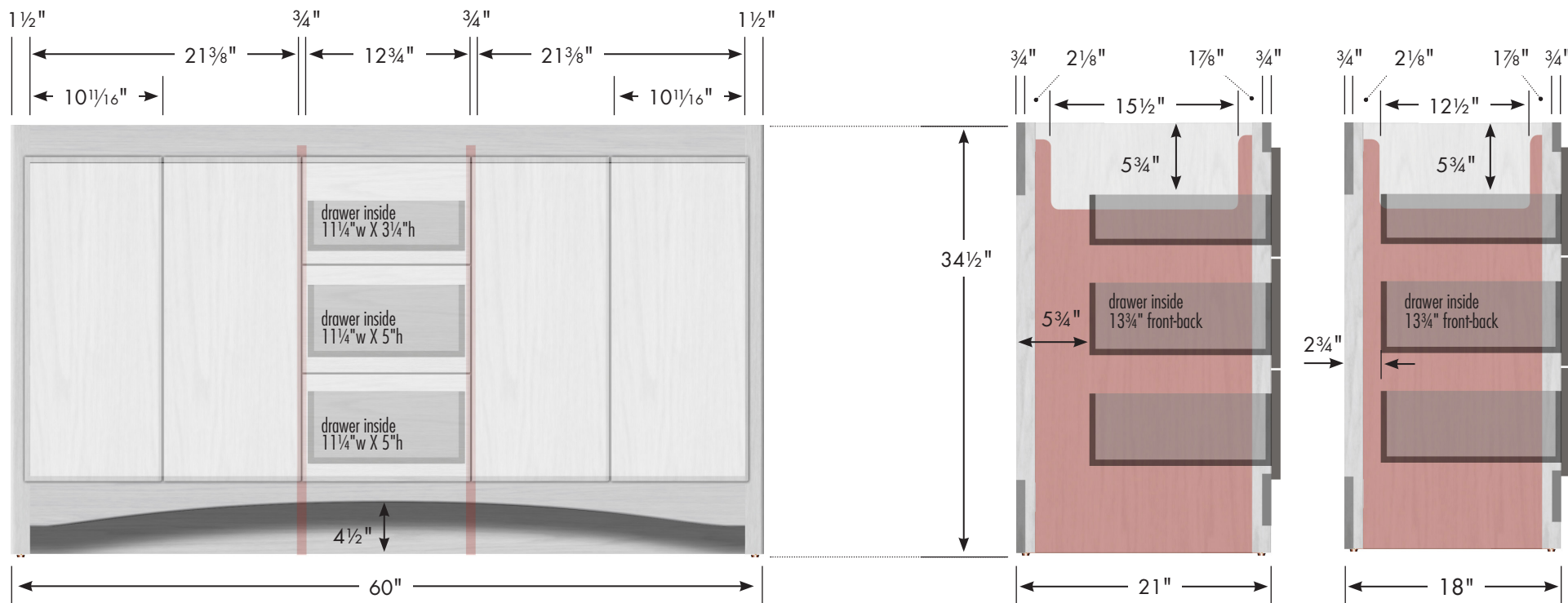


2

STRASSER

Specifications:

Ravenna View Vanity
60"w, 34½"h, double basin



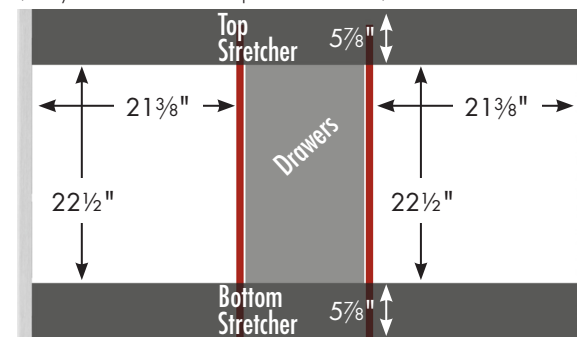
Adjustable/removable shelf under basins behind doors

internal dividers

60" wide, 34½" tall
21" or 18" front-to-back



Vanity back clear openings for plumbing
(may need to cut adjustable shelf)

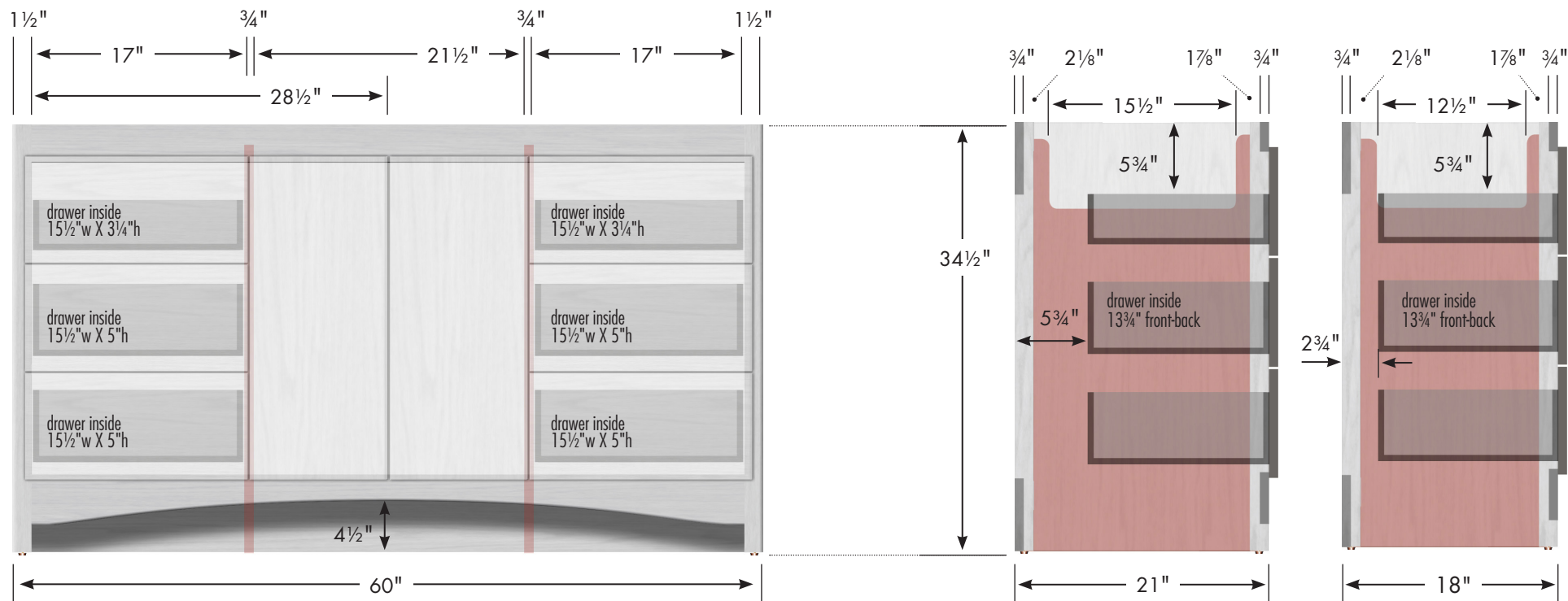


3

STRASSER

Specifications:

Ravenna View Vanity
60"w, 34½"h, center basin



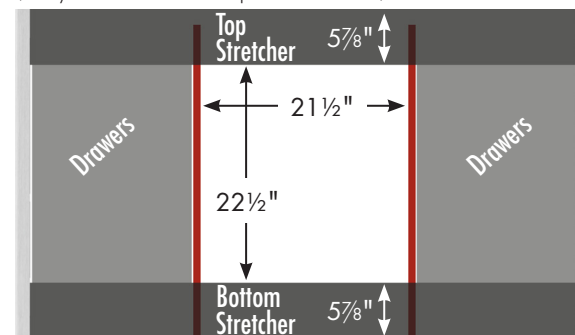
Adjustable/removable shelf under basin behind doors

internal dividers

60" wide, 34½" tall
21" or 18" front-to-back



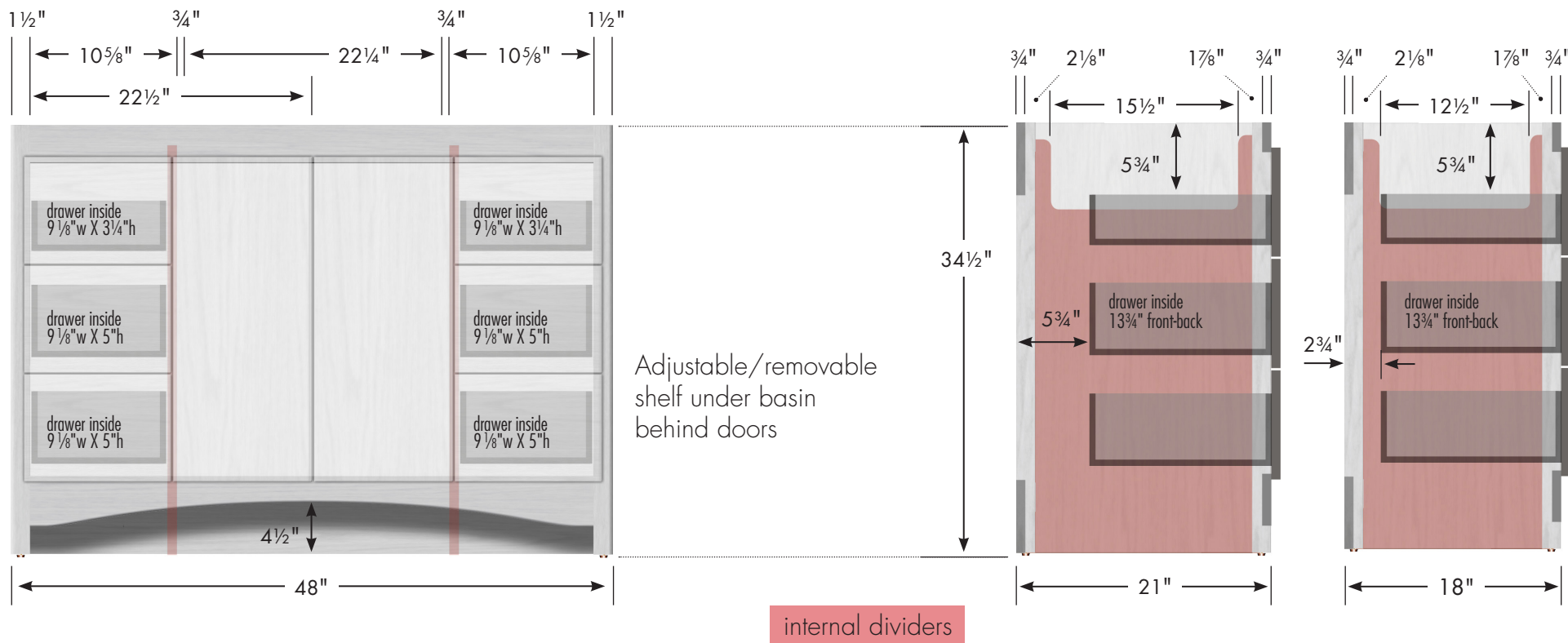
Vanity back clear openings for plumbing
(may need to cut adjustable shelf)



STRASSER

Specifications:

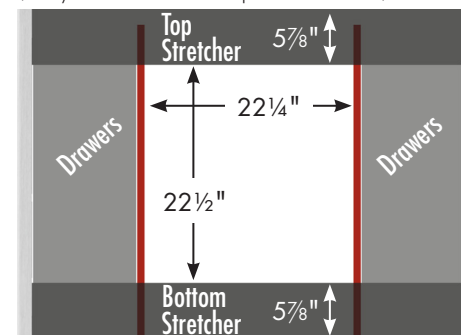
Ravenna View Vanity
48"w, 34½"h



48" wide, 34½" tall
21" or 18" front-to-back



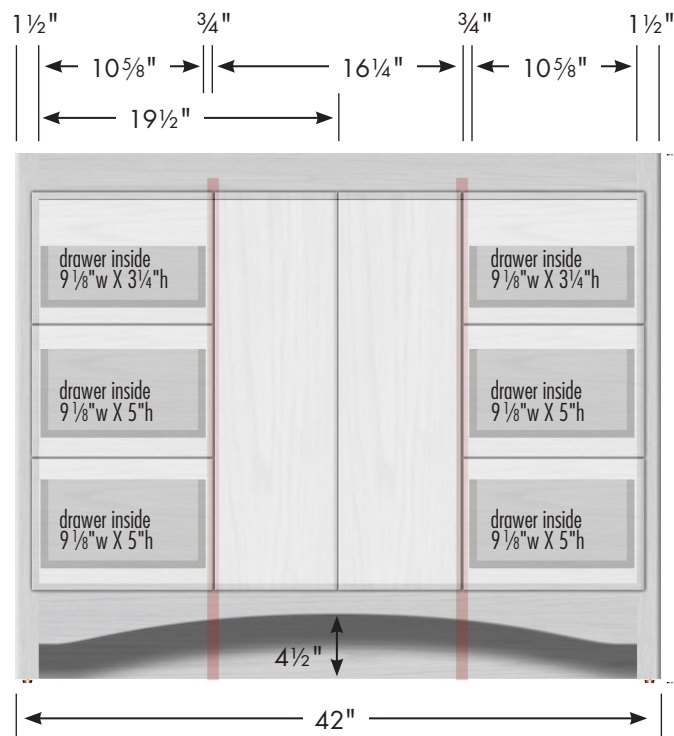
Vanity back clear openings for plumbing
(may need to cut adjustable shelf)



STRASSER

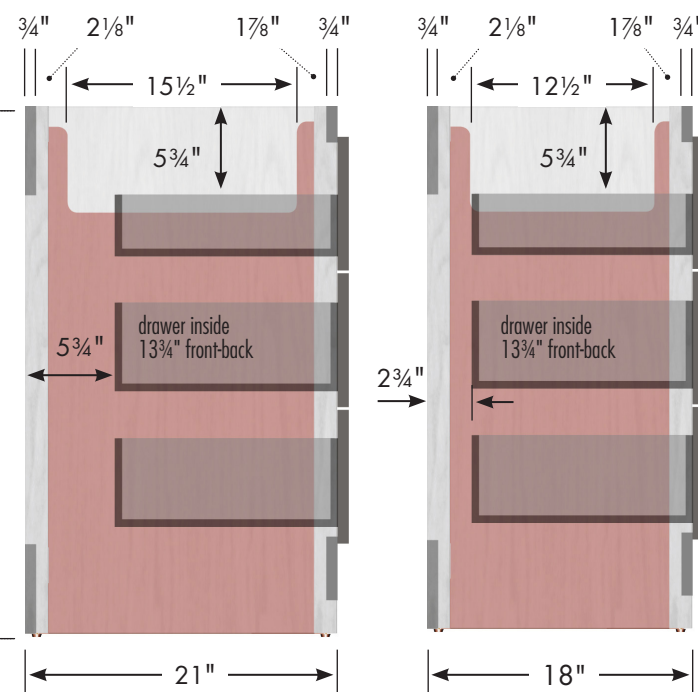
Specifications:

Ravenna View Vanity
42"w, 34½"h



Adjustable/removable shelf under basin behind doors

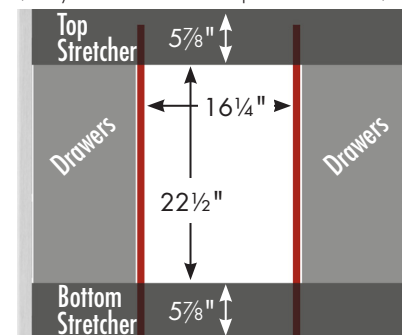
internal dividers



42" wide, 34½" tall
21" or 18" front-to-back



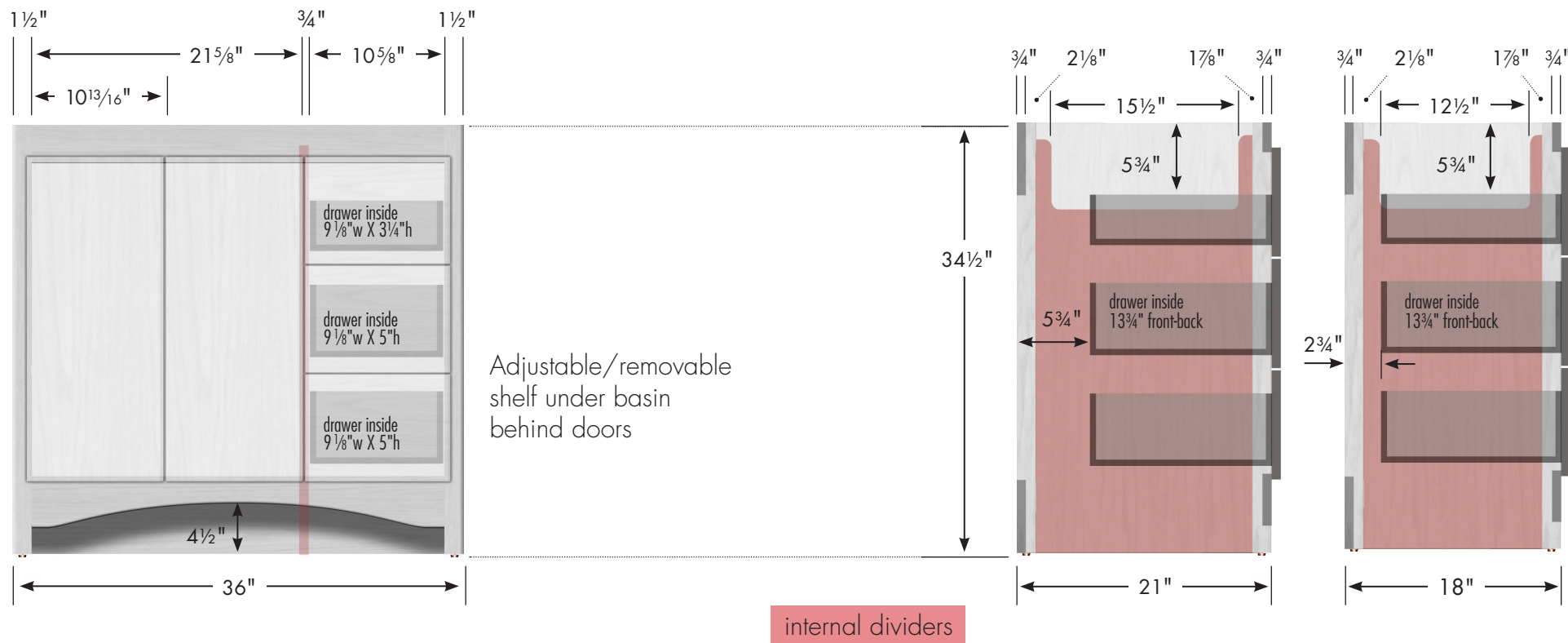
Vanity back clear openings for plumbing
(may need to cut adjustable shelf)



STRASSER

Specifications:

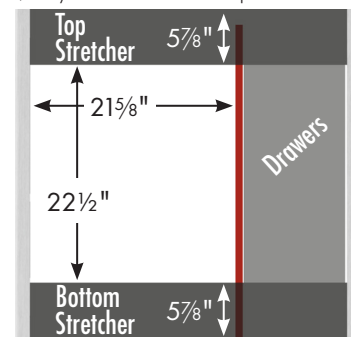
Ravenna View Vanity
36"w, 34½"h, drawers right



36\" wide, 34½\" tall
21\" or 18\" front-to-back



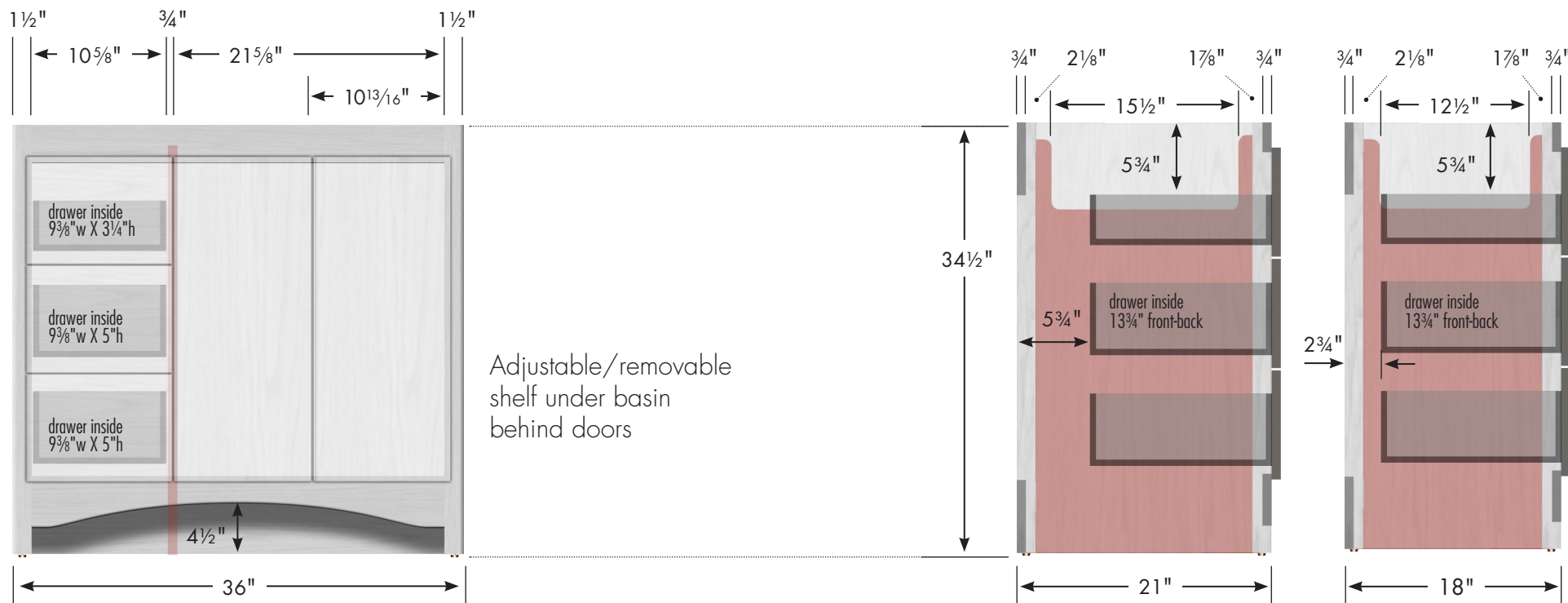
Vanity back clear openings for plumbing
(may need to cut adjustable shelf)



STRASSER

Specifications:

Ravenna View Vanity
36"w, 34½"h, drawers left

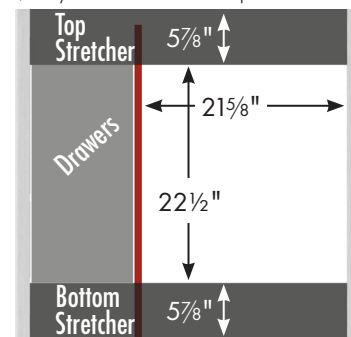


internal dividers

36" wide, 34½" tall
21" or 18" front-to-back



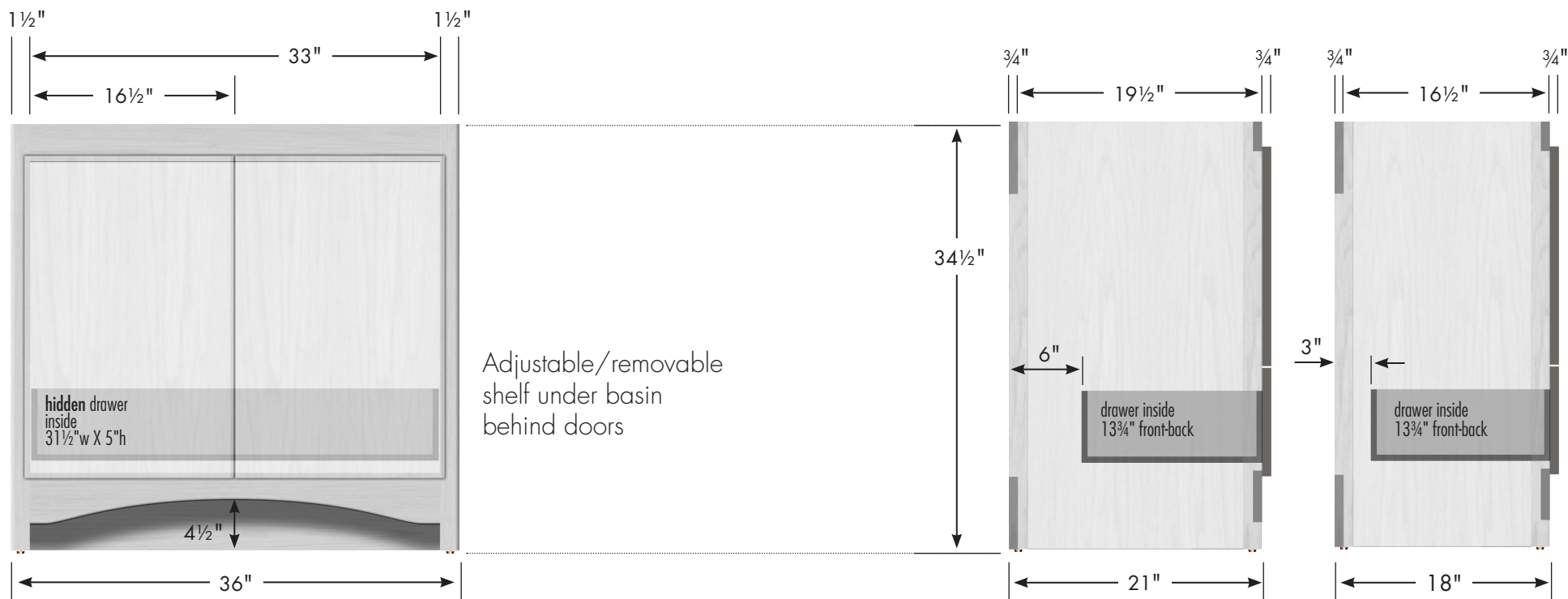
Vanity back clear openings for plumbing
(may need to cut adjustable shelf)



STRASSER

Specifications:

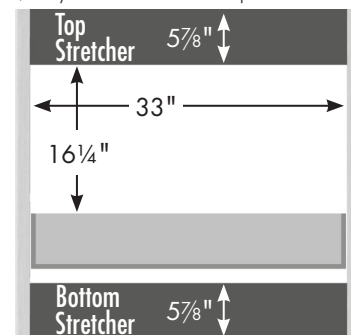
Ravenna View Vanity
36" w, 34½" h, no side drawers



36" wide, 34½" tall
21" or 18" front-to-back



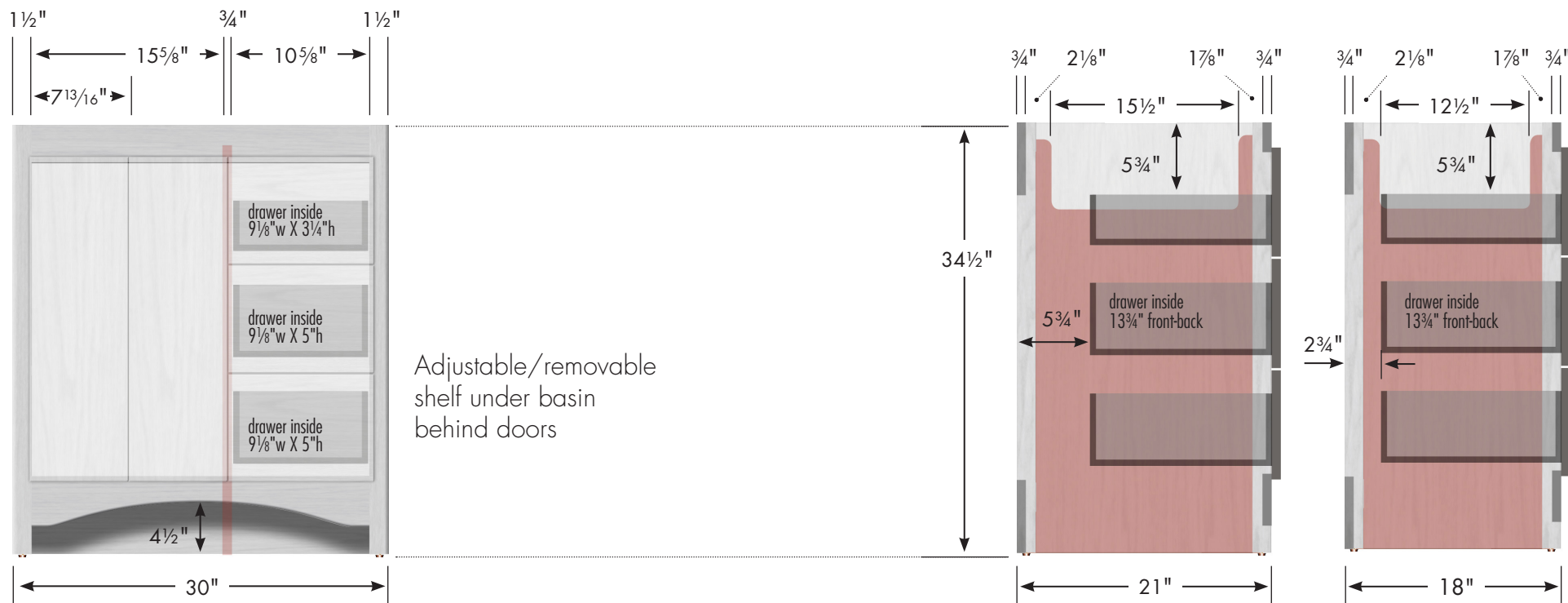
Vanity back clear openings for plumbing
(may need to cut adjustable shelf)



STRASSER

Specifications:

Ravenna View Vanity
30"w, 34½"h, drawers right

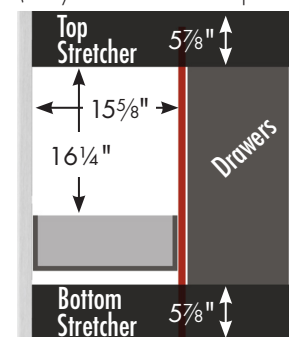


internal dividers

30" wide, 34½" tall
21" or 18" front-to-back



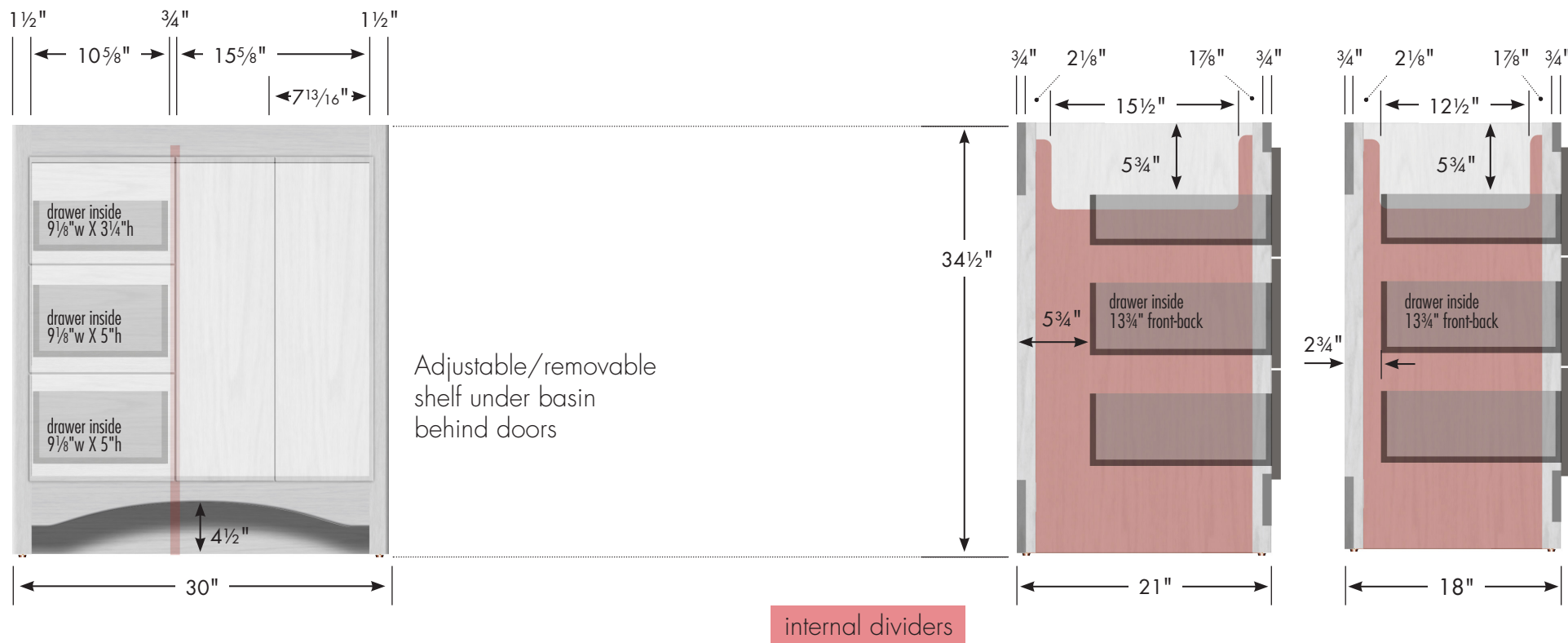
Vanity back clear openings for plumbing
(may need to cut adjustable shelf)



STRASSER

Specifications:

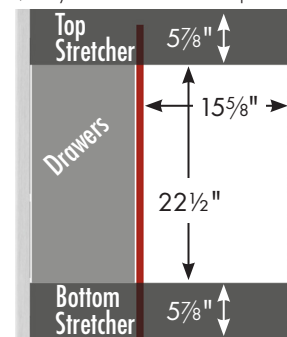
Ravenna View Vanity
30"w, 34½"h, drawers left



30" wide, 34½" tall
21" or 18" front-to-back



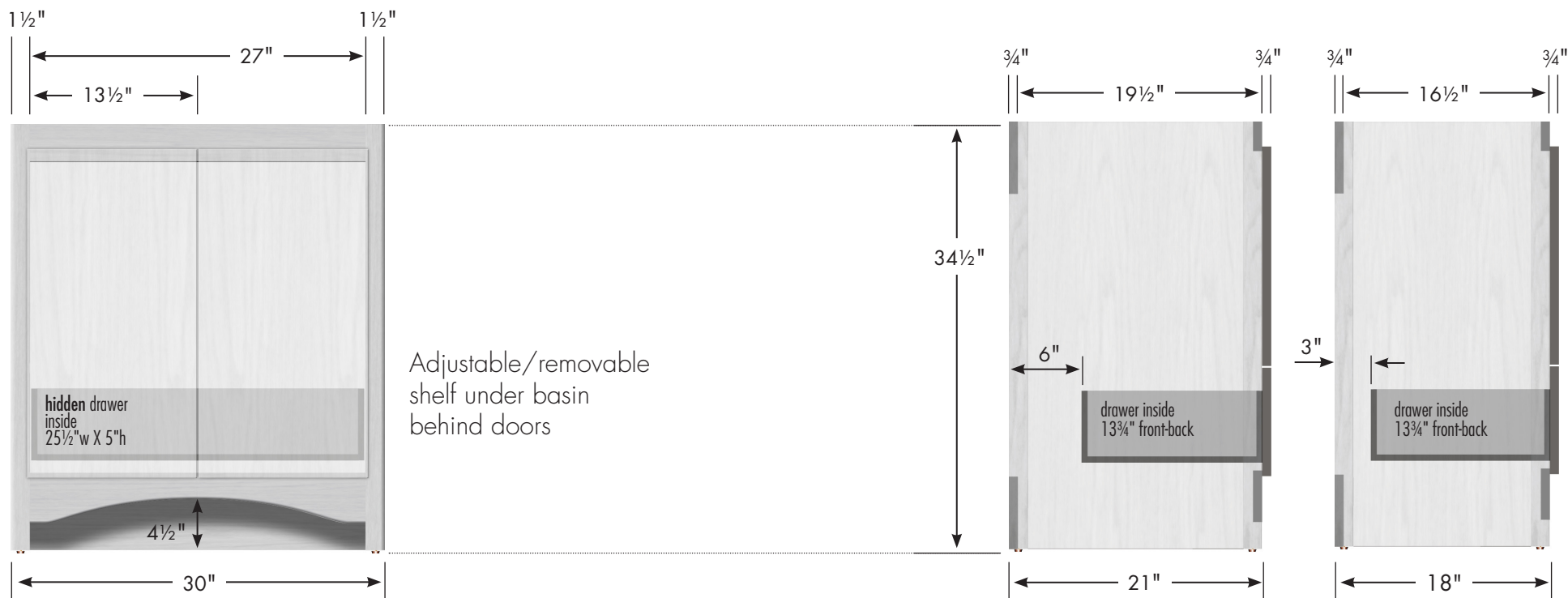
Vanity back clear openings for plumbing
(may need to cut adjustable shelf)



STRASSER

Specifications:

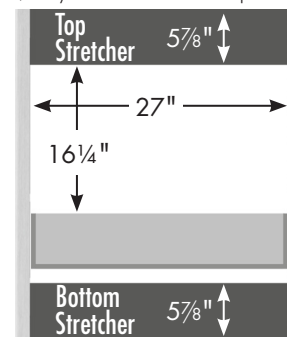
Ravenna View Vanity
30"w, 34½"h, no side drawers



30" wide, 34½" tall
 21" or 18" front-to-back



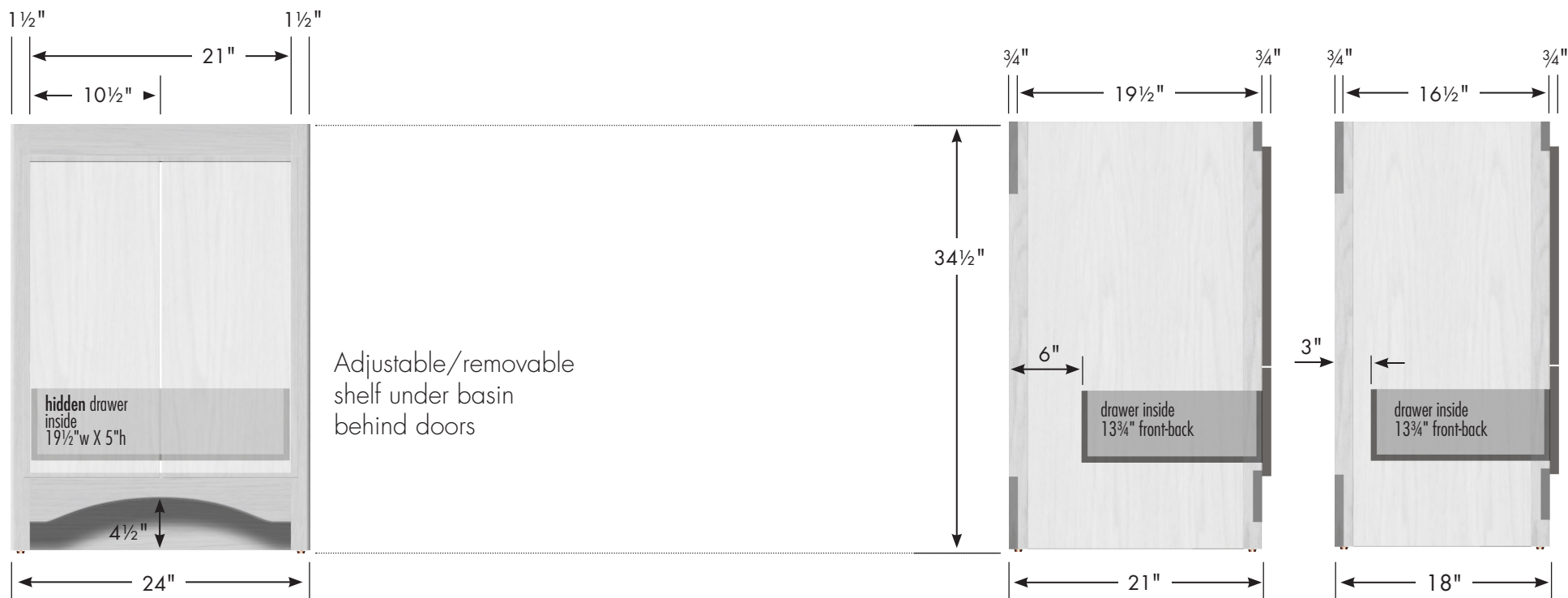
Vanity back clear openings for plumbing
 (may need to cut adjustable shelf)



STRASSER

Specifications:

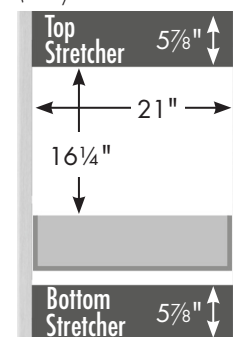
Ravenna View Vanity
24"w, 34½"h



24" wide, 34½" tall
21" or 18" front-to-back



Vanity back clear openings for plumbing
(may need to cut adjustable shelf)



STRASSER

Specifications:

Ravenna Linen
19½"w, 70"h

SPECIAL NOTE

Serious or fatal crushing injuries can occur from a linen cabinet tipping over.

To help prevent tipover:

- Install provided tipover restraint
- Place heaviest items in the lower drawers
- Do not place heavy objects on top of this product
- Never allow children to climb or hang on drawers, doors or shelves
- Do not open more than one drawer at a time.

Use of tipover restraints may only reduce, but not eliminate, the risk of tipover.

We supply attachment hardware with your order but some applications may need different/additional hardware. Manufacturer assumes no liability for improper installation or excessive loads placed on screws, brackets or straps.

19½" Ravenna Linen

19½" wide
70" tall

21" or 18" front-to-back
optional crown adds 1" to height

