

## Specification Sheets for Wall Storage

### SPECIFICATION VARIANCES

Dimensions on finished vanities may vary slightly from those shown on these specification sheets due to variability in construction materials.

Our products are engineered to maintain close dimensional tolerances but variability in manufacturing materials can change dimensions slightly (normally within  $\pm 1/8"$  but occasionally up to  $\pm 3/16"$ ).

In most applications these slight variations will have no impact upon installation, appearance or function. However, when planning and finishing a space for a built in vanity, **do not frame or finish the space before measuring the actual cabinet!**

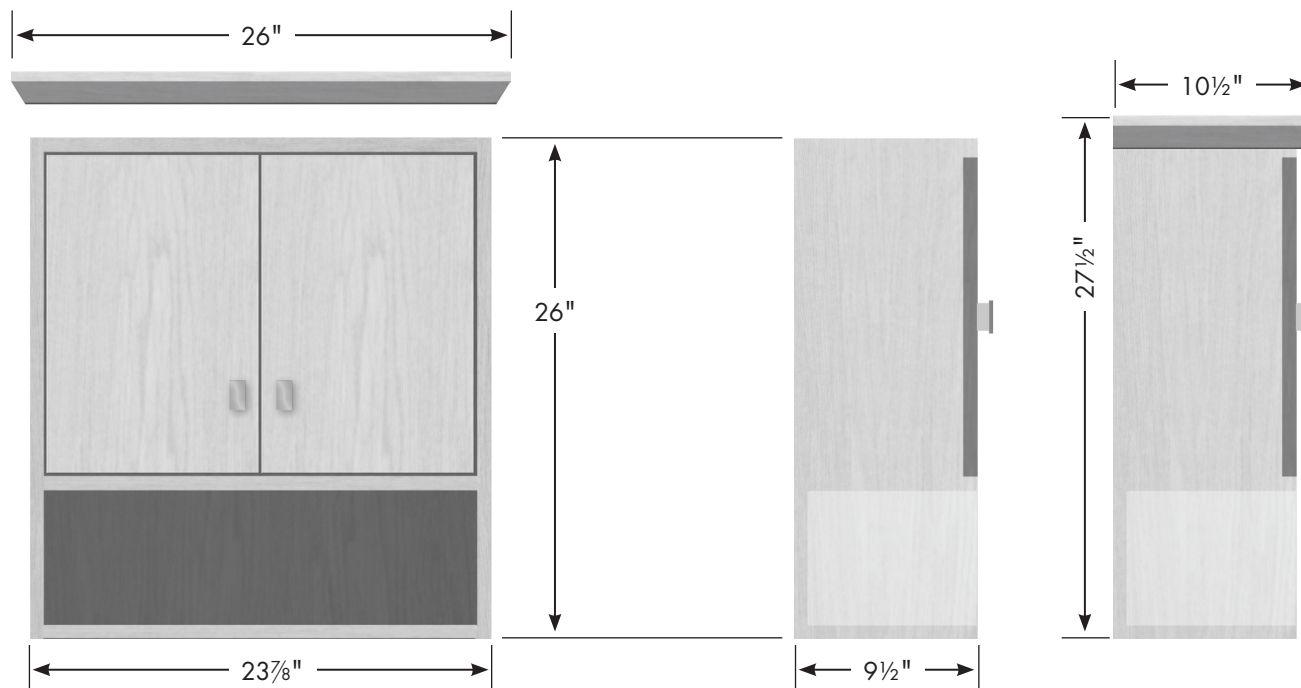
We can not be responsible for any expenses incurred as a result of the end user or contractor not following this guideline.

REV: 2019-03

# STRASSER

Specifications:

**24" Contemporary Overjohn**



1 adjustable position shelf behind the doors; 3/4" material finished to match the cabinet.

## 24" Contemporary Overjohn

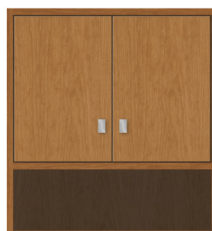
23 7/8" wide

26" tall

9 1/2" front-to-back

*with optional crown:*

26" wide, 27 1/2" tall, 10 1/2" front-to-back



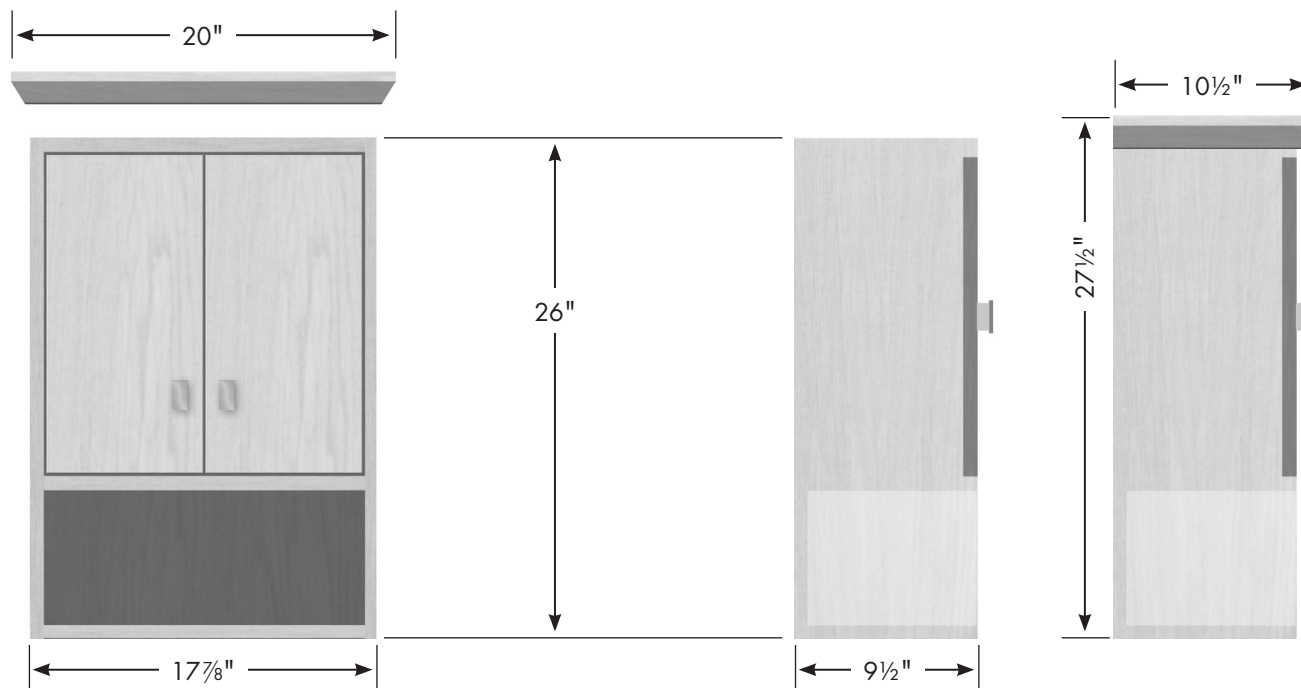
⇐ *with optional crown*

2

# STRASSER

Specifications:

18" Contemporary Overjohn



1 adjustable position shelf behind the doors; 3/4" material finished to match the cabinet.

## 18" Contemporary Overjohn

17 7/8" wide

26" tall

9 1/2" front-to-back

with optional crown:

20" wide, 27 1/2" tall, 10 1/2" front-to-back

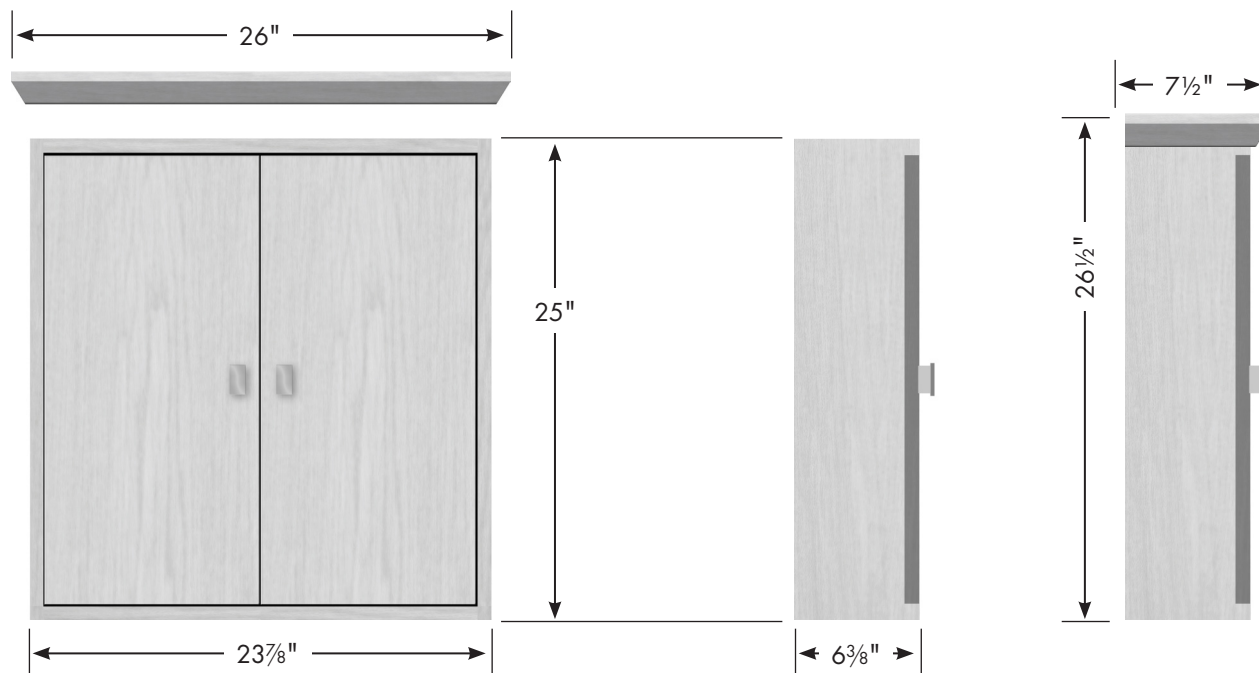


⇐ with optional crown

# STRASSER

Specifications:

24" Contemporary  
Cubby



2 adjustable position shelves; 3/8" thick  
frosted acrylic, radiused front edge.

## 24" Contemporary Cubby

23<sup>7</sup>/<sub>8</sub>" wide

25" tall

6<sup>3</sup>/<sub>8</sub>" front-to-back

*with optional crown:*

26" wide, 26<sup>1</sup>/<sub>2</sub>" tall, 7<sup>1</sup>/<sub>2</sub>" front-to-back



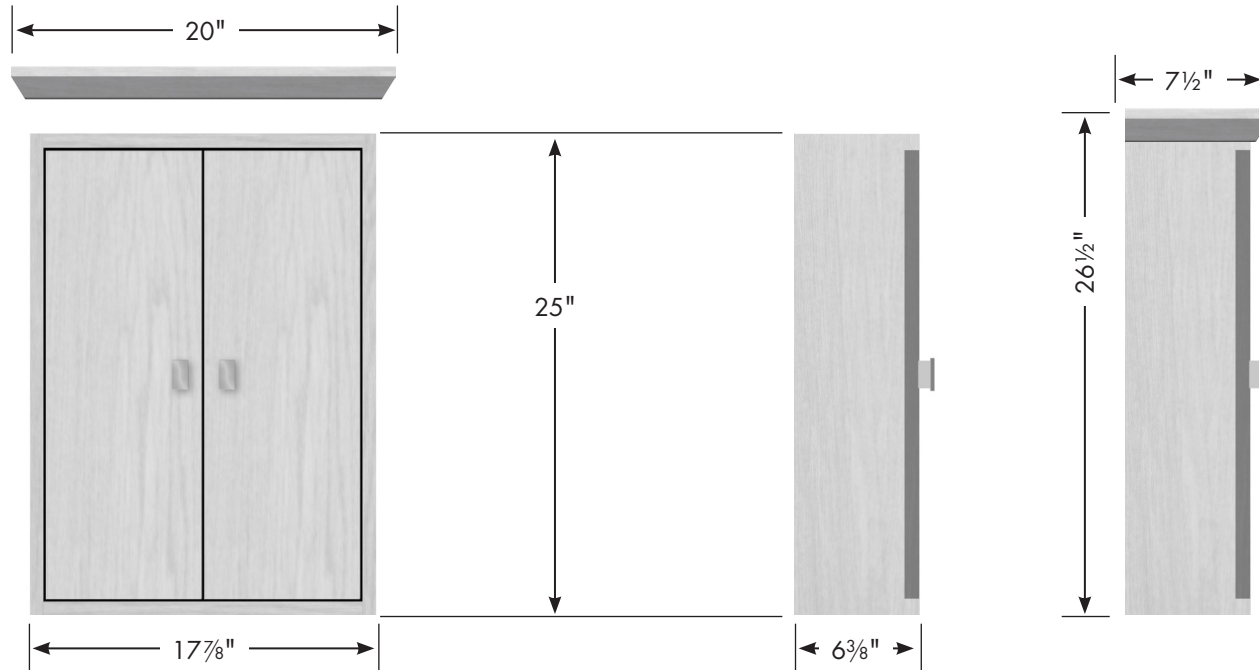
⇐ *with optional crown*

4

# STRASSER

Specifications:

## 18" Contemporary Cubby



2 adjustable position shelves; 3/8" thick frosted acrylic, radiused front edge.

### 18" Contemporary Cubby

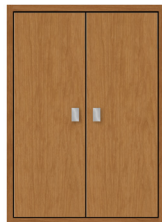
17<sup>7</sup>/<sub>8</sub>" wide

25" tall

6<sup>3</sup>/<sub>8</sub>" front-to-back

*with optional crown:*

20" wide, 26<sup>1</sup>/<sub>2</sub>" tall, 7<sup>1</sup>/<sub>2</sub>" front-to-back



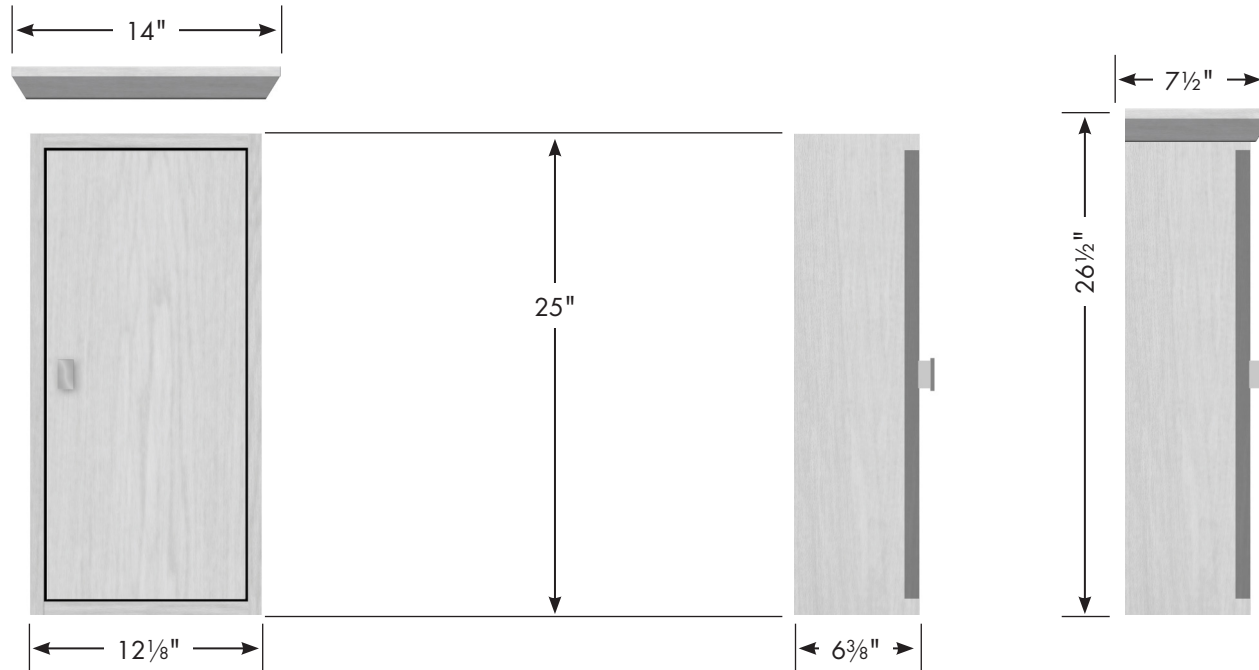
⇐ *with optional crown*

5

# STRASSER

Specifications:

## 12" Contemporary Cubby



2 adjustable position shelves; 3/8" thick frosted acrylic, radiused front edge.

### 12" Contemporary Cubby

12 1/8" wide

25" tall

6 3/8" front-to-back

*with optional crown:*

14" wide, 26 1/2" tall, 7 1/2" front-to-back



⇔ *with optional crown*

# STRASSER

Specifications:

## 18" Contemporary TALL Cubby

2 adjustable position shelves each compartment (4 total); 3/8" thick frosted acrylic, radiused front edge.

with optional crown ⇨

### 18" Contemporary Cubby TALL Version

17<sup>7</sup>/<sub>8</sub>" wide

48" tall

6<sup>3</sup>/<sub>8</sub>" front-to-back

with optional crown:

20" wide, 49<sup>1</sup>/<sub>2</sub>" tall, 7<sup>1</sup>/<sub>2</sub>" front-to-back

