

Specification Sheets for Wallingford Vanities & Linen.

SPECIFICATION VARIANCES

Dimensions on finished vanities may vary slightly from those shown on these specification sheets due to variability in construction materials.

Our products are engineered to maintain close dimensional tolerances but variability in manufacturing materials can change dimensions slightly (normally within $\pm 1/8"$ but occasionally up to $\pm 3/16"$).

In most applications these slight variations will have no impact upon installation, appearance or function. However, when planning and finishing a space for a built in vanity, **do not frame or finish the space before measuring the actual cabinet!**

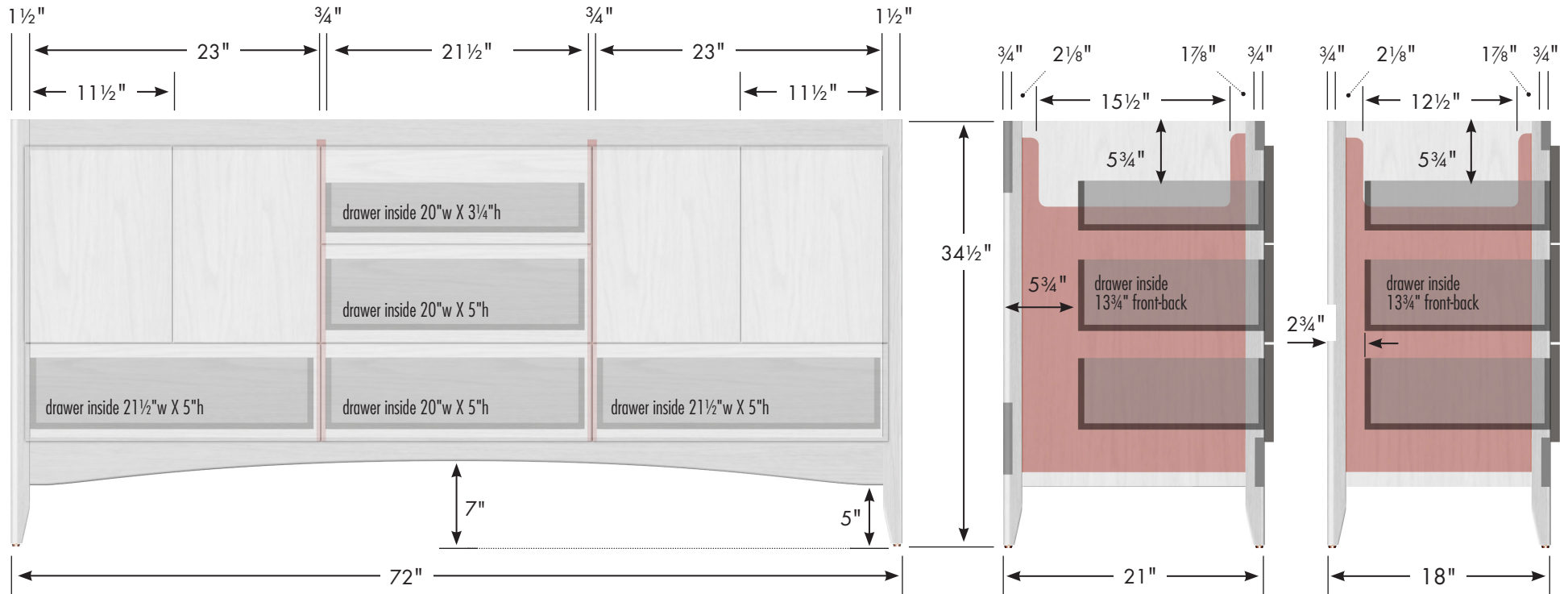
We can not be responsible for any expenses incurred as a result of the end user or contractor not following this guideline.

REV: 2019-07

STRASSER

Specifications:

Wallingford Vanity
72"w, 34½"h, double basin



Adjustable/removable shelf under basins behind doors

internal dividers

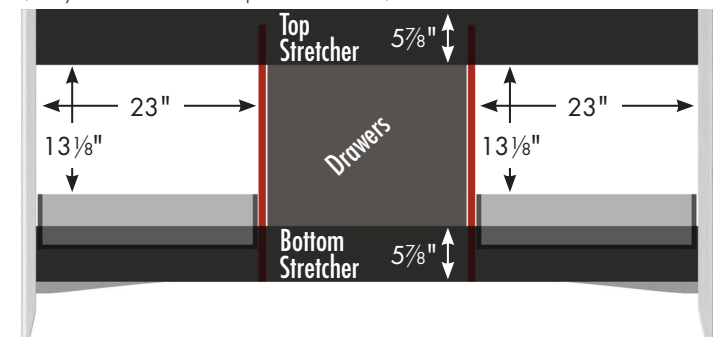
Vanity back clear openings for plumbing
(may need to cut adjustable shelf)

72" Wallingford Vanity

72" wide
34½" tall
21" or 18" front-to-back



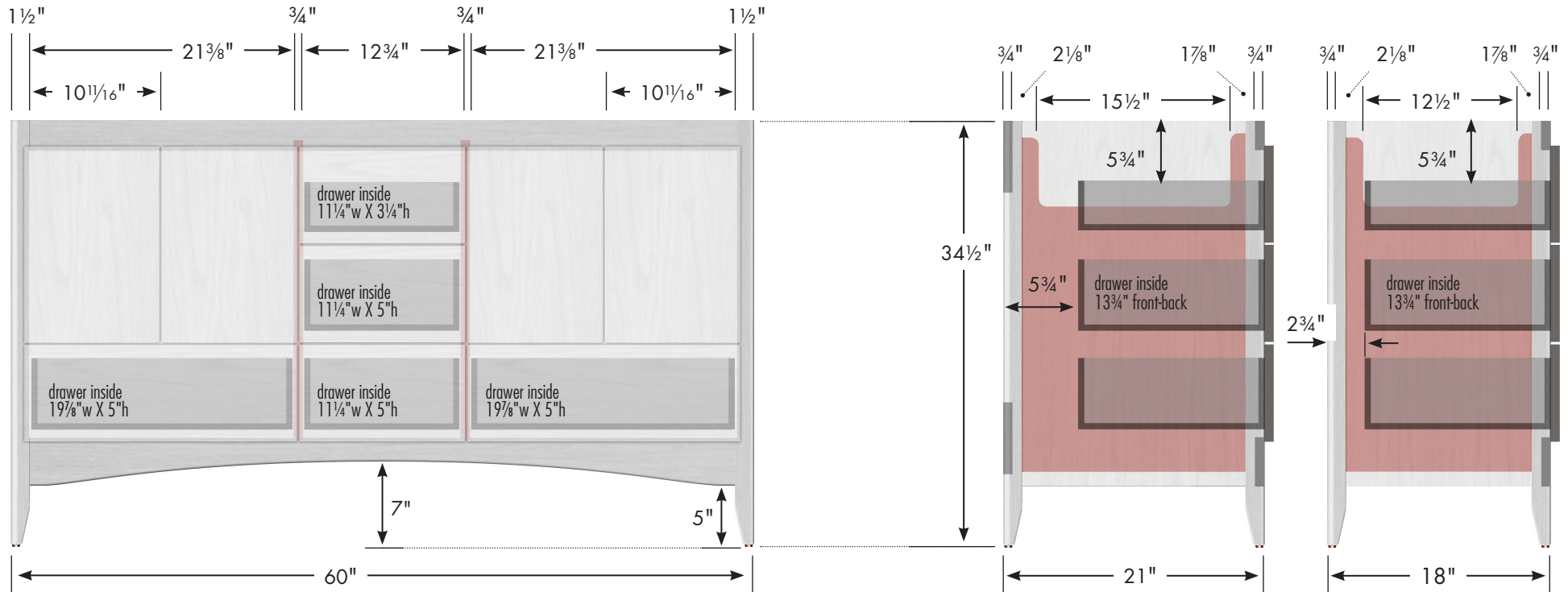
2



STRASSER

Specifications:

Wallingford Vanity
60"w, 34½"h, double basin

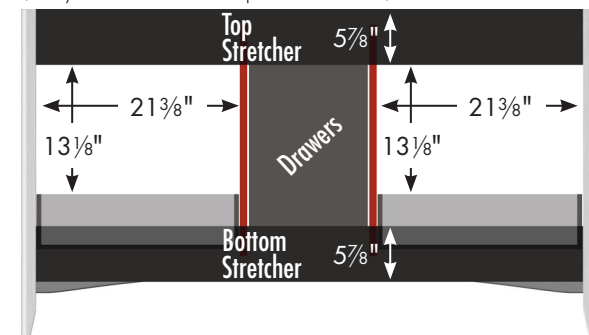


Adjustable/removable shelf under basins behind doors

internal dividers

Vanity back clear openings for plumbing
(may need to cut adjustable shelf)

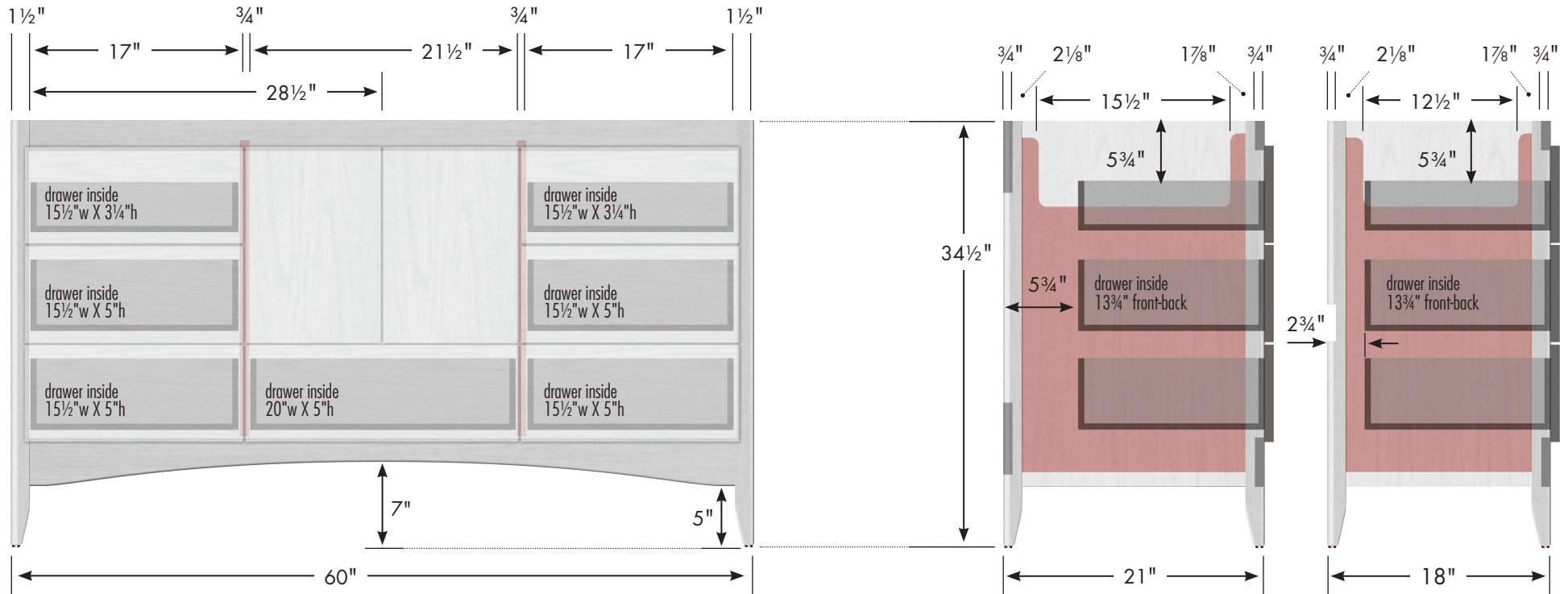
60" Wallingford Vanity
Double Basin
60" wide
34½" tall
21" or 18" front-to-back



STRASSER

Specifications:

Wallingford Vanity
60"w, 34½"h, center basin

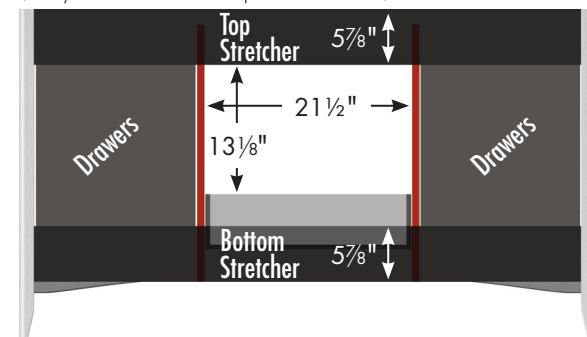


Adjustable/removable shelf under basin behind doors

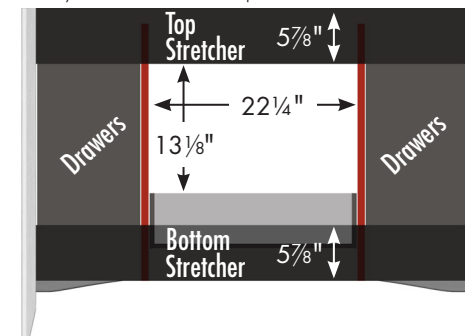
internal dividers

Vanity back clear openings for plumbing
(may need to cut adjustable shelf)

60" Wallingford Vanity
Center Basin
60" wide
34½" tall
21" or 18" front-to-back



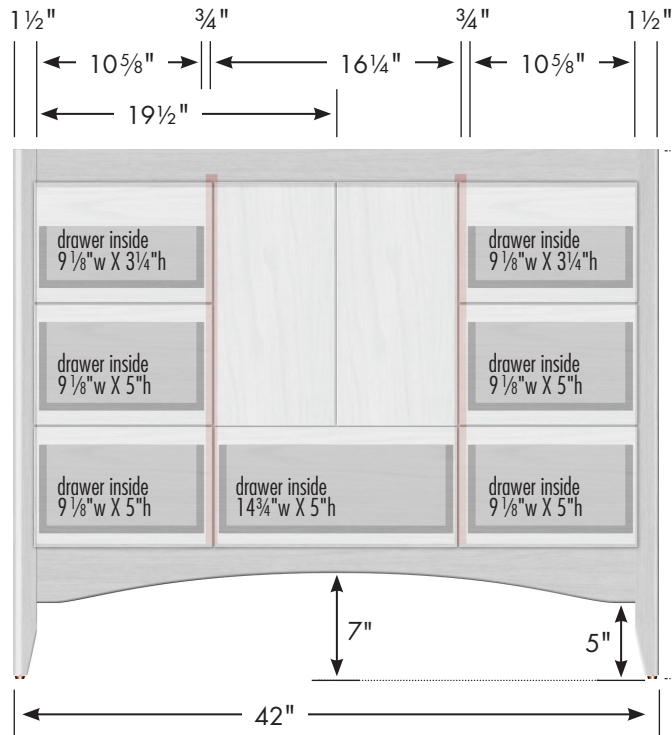
Wallingford Vanity
48"w, 34½"h



STRASSER

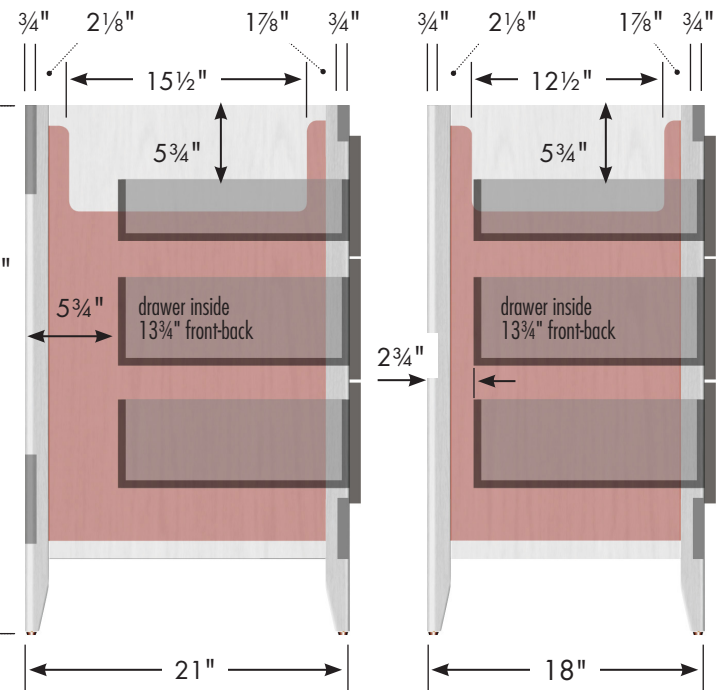
Specifications:

Wallingford Vanity
42"w, 34½"h



Adjustable/removable shelf under basin behind doors

internal dividers

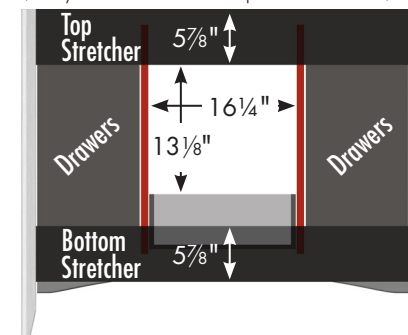


42" Wallingford Vanity

42" wide
34½" tall
21" or 18" front-to-back



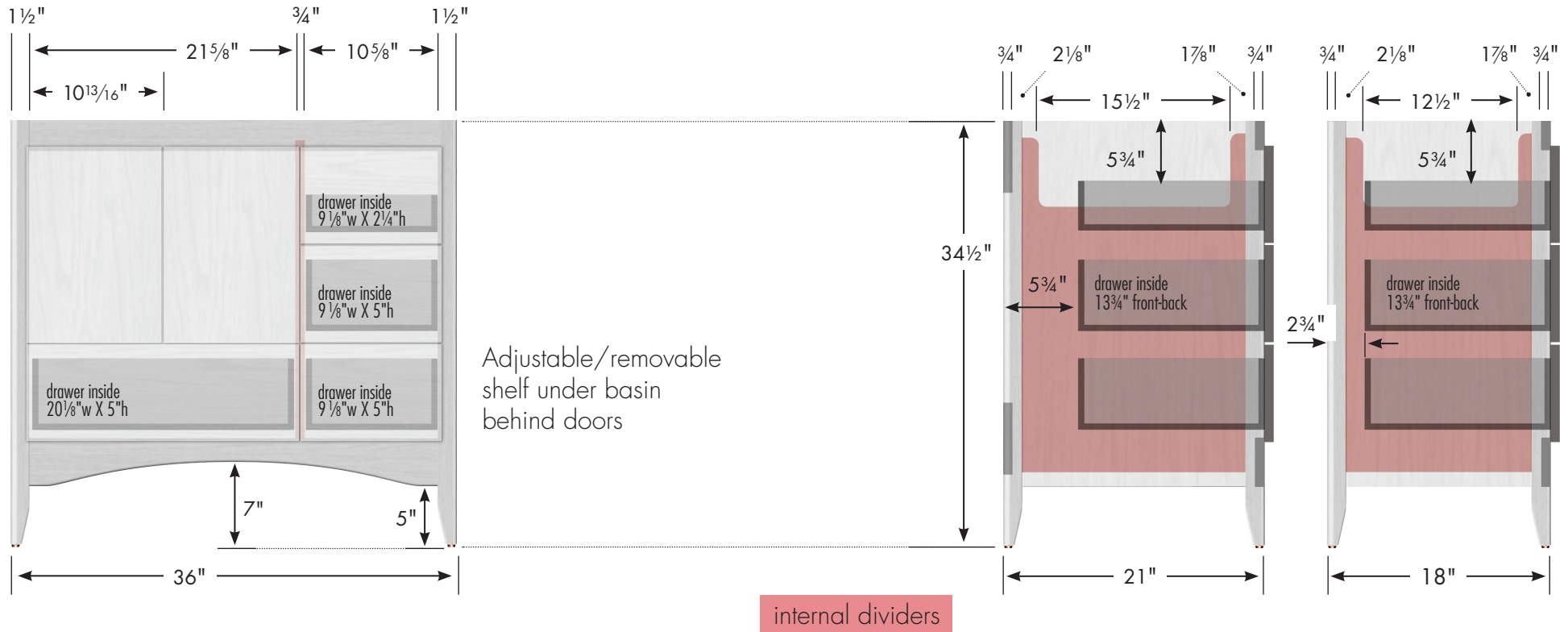
Vanity back clear openings for plumbing
(may need to cut adjustable shelf)



STRASSER

Specifications:

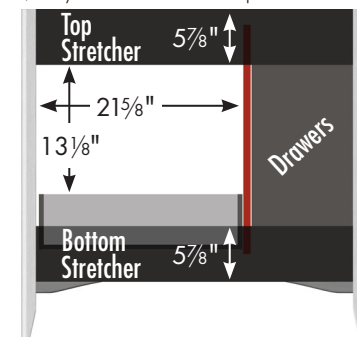
Wallingford Vanity
36"w, 34½"h, drawers right



36" Wallingford Vanity
Drawers Right
36" wide
34½" tall
21" or 18" front-to-back



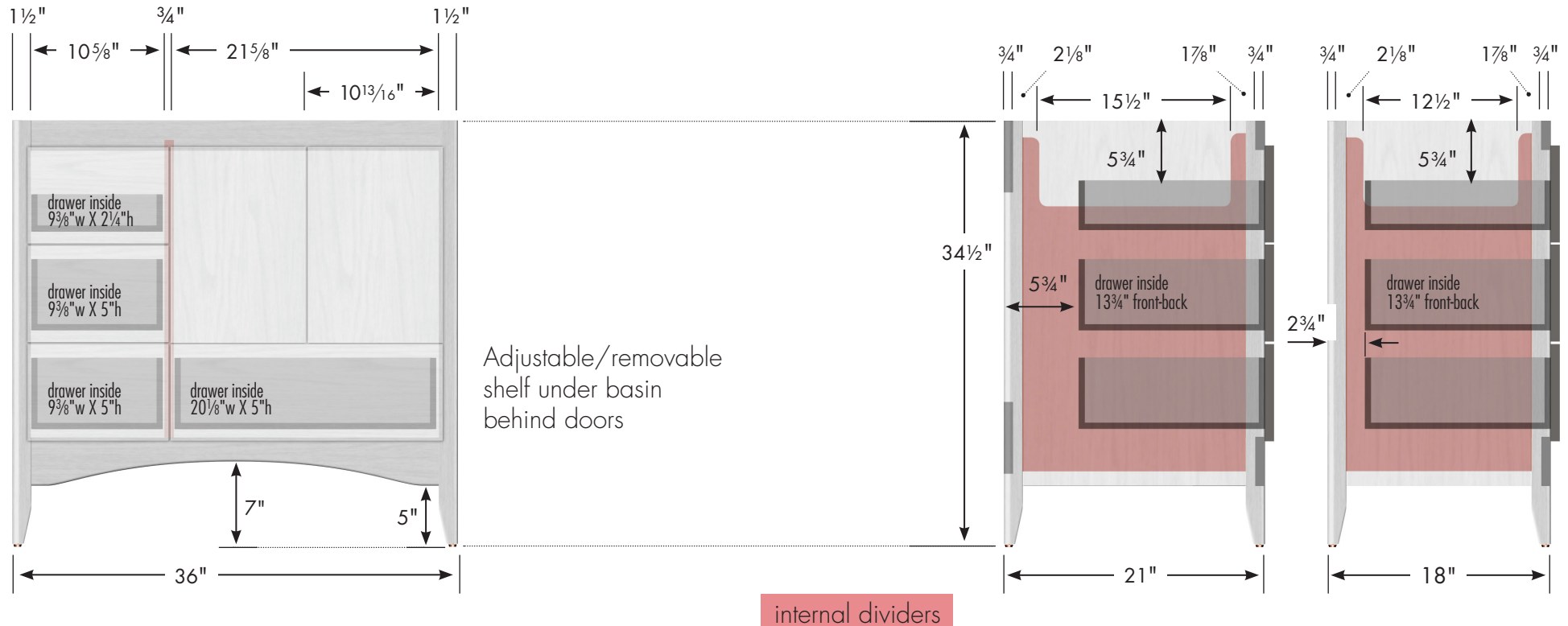
Vanity back clear openings for plumbing
(may need to cut adjustable shelf)



STRASSER

Specifications:

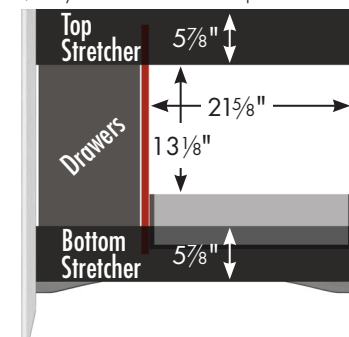
Wallingford Vanity
36"w, 34½"h, drawers left



36" Wallingford Vanity
Drawers Left
36" wide
34½" tall
21" or 18" front-to-back



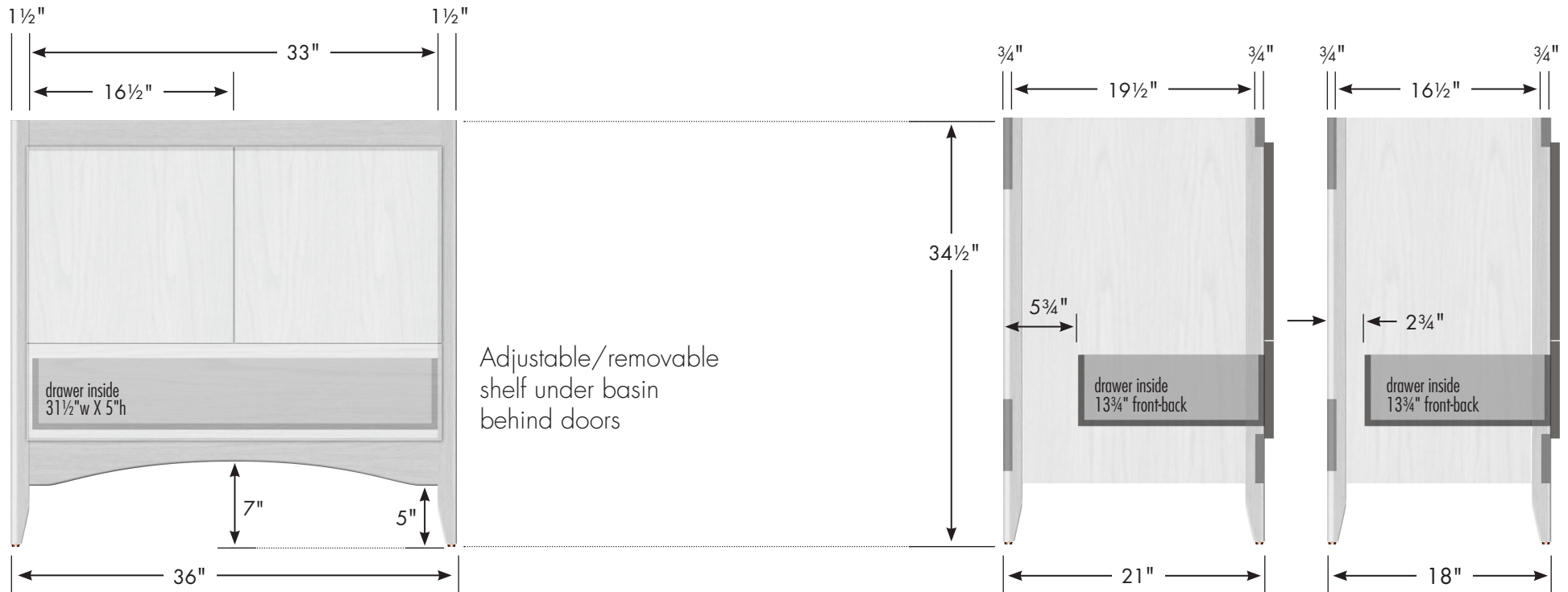
Vanity back clear openings for plumbing
(may need to cut adjustable shelf)



STRASSER

Specifications:

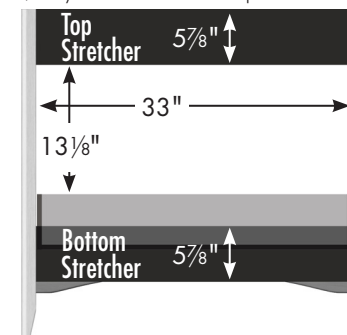
Wallingford Vanity
36"w, 34½"h, no side drawers



36" Wallingford Vanity
No Side Drawers
36" wide
34½" tall
21" or 18" front-to-back



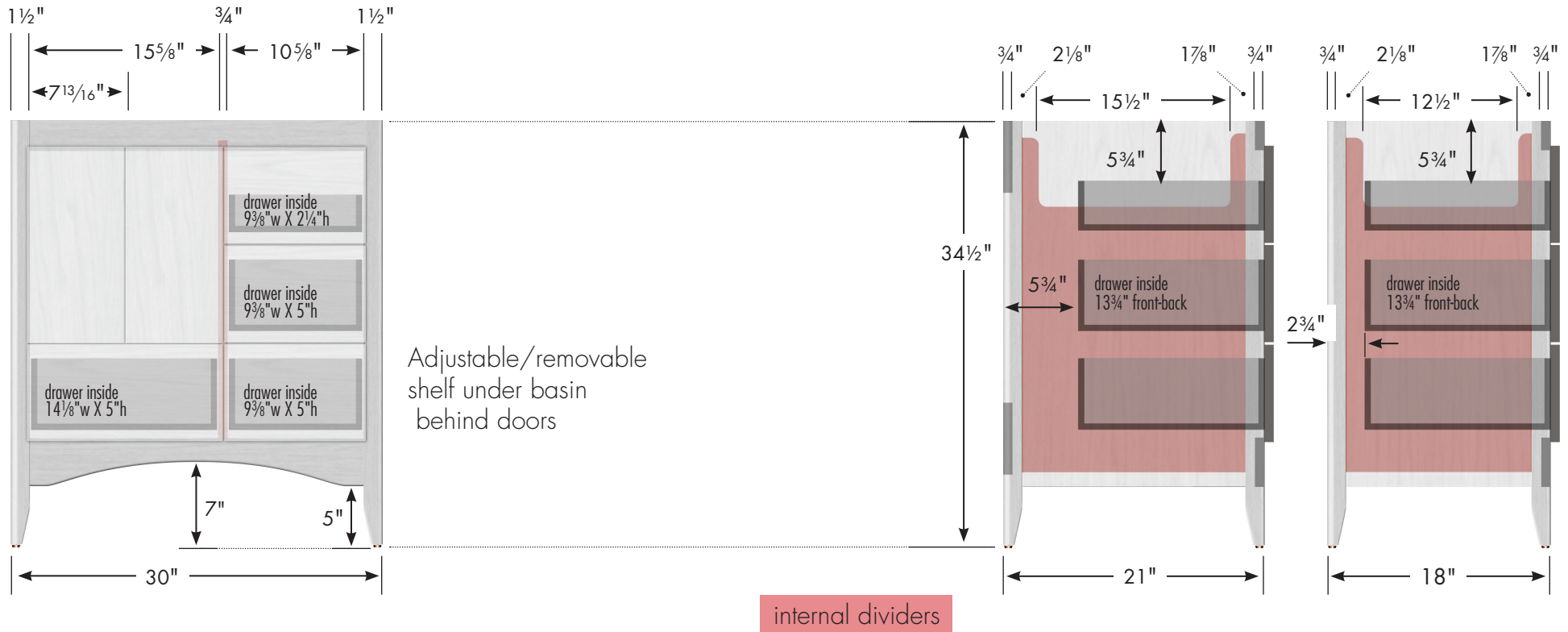
Vanity back clear openings for plumbing
(may need to cut adjustable shelf)



STRASSER

Specifications:

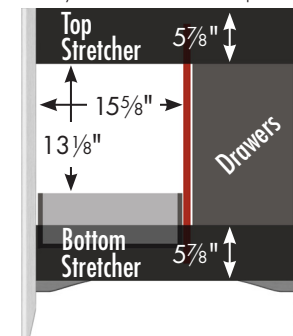
Wallingford Vanity
30"w, 34½"h, drawers right



30" Wallingford Vanity
Drawers Right
30" wide
34½" tall
21" or 18" front-to-back



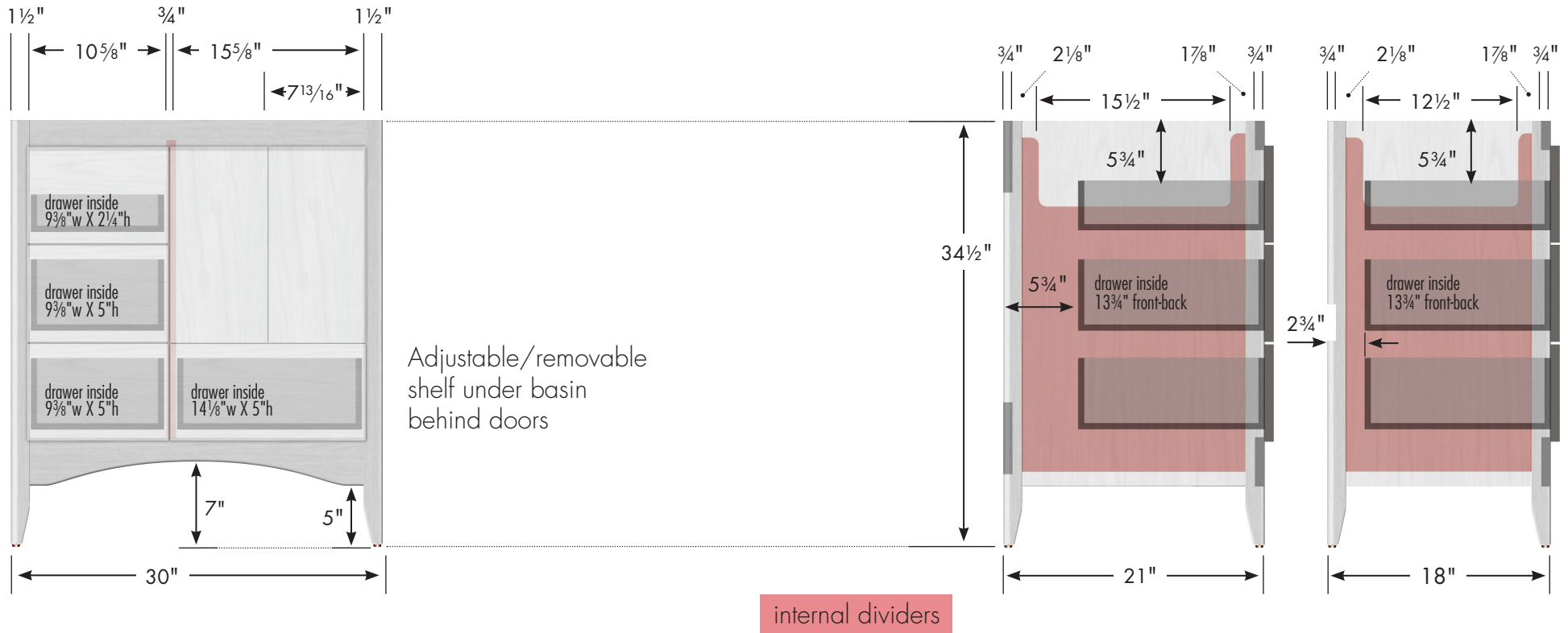
Vanity back clear openings for plumbing
(may need to cut adjustable shelf)



STRASSER

Specifications:

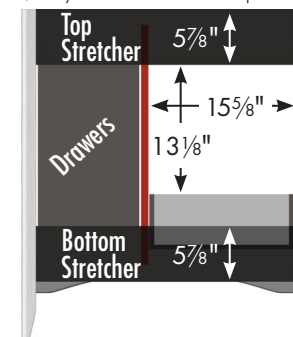
Wallingford Vanity
30"w, 34½"h, drawers left



30" Wallingford Vanity
Drawers Left
30" wide
34½" tall
21" or 18" front-to-back



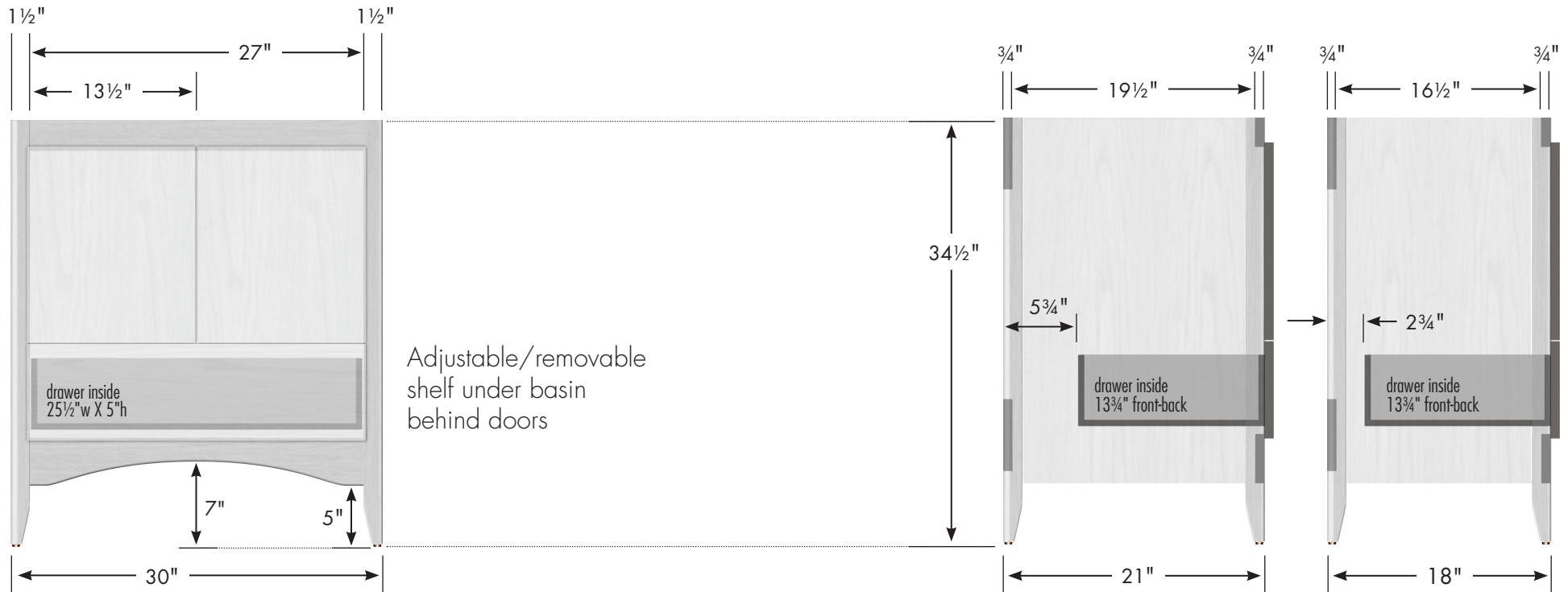
Vanity back clear openings for plumbing
(may need to cut adjustable shelf)



STRASSER

Specifications:

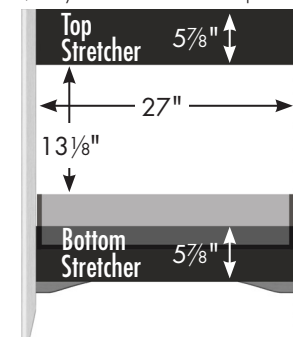
Wallingford Vanity
30"w, 34½"h, no side drawers



30" Wallingford Vanity
No Side Drawers
30" wide
34½" tall
21" or 18" front-to-back



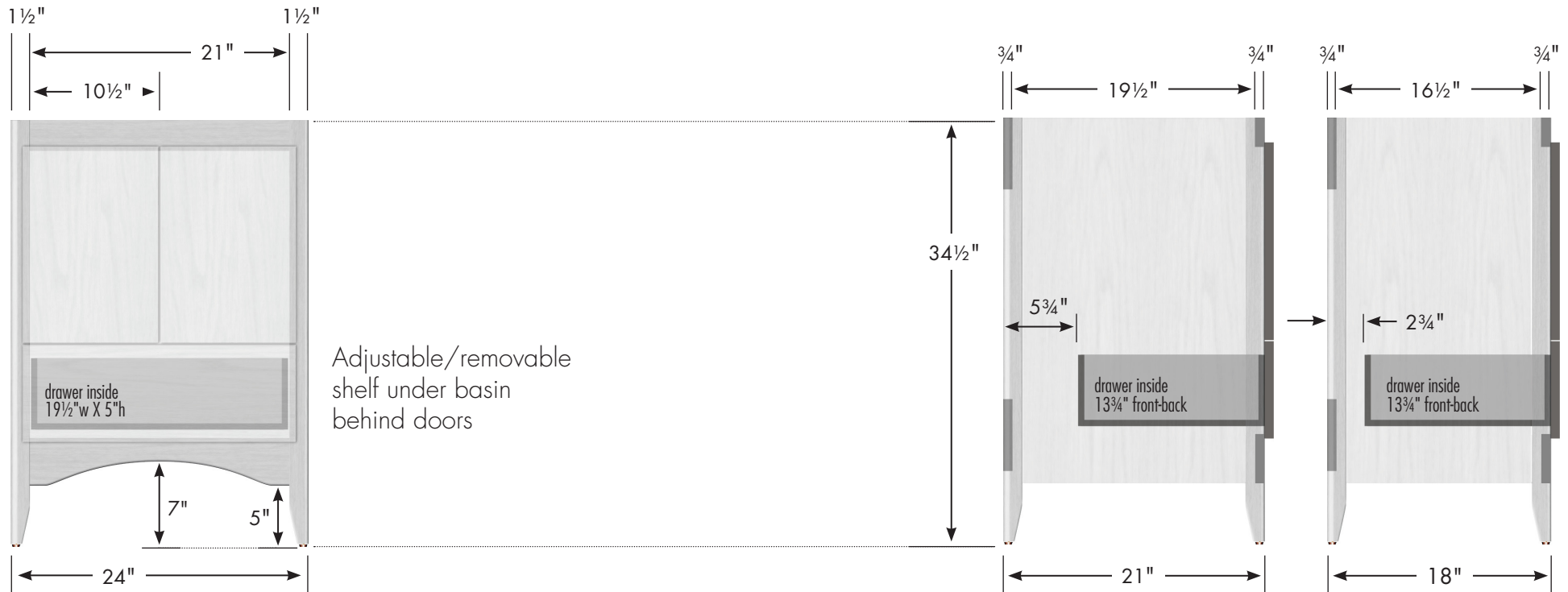
Vanity back clear openings for plumbing
(may need to cut adjustable shelf)



STRASSER

Specifications:

Wallingford Vanity
24"w, 34½"h

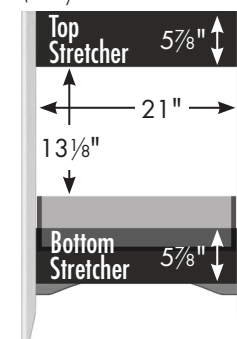


24" Wallingford Vanity

24" wide
34½" tall
21" or 18" front-to-back



Vanity back clear openings for plumbing
(may need to cut adjustable shelf)



STRASSER

Specifications:

Wallingford Linen
19½"w, 70"h

SPECIAL NOTE

Serious or fatal crushing injuries can occur from a linen cabinet tipping over.

To help prevent tipover:

- Install provided tipover restraint
- Place heaviest items in the lower drawers
- Do not place heavy objects on top of this product
- Never allow children to climb or hang on drawers, doors or shelves
- Do not open more than one drawer at a time.

Use of tipover restraints may only reduce, but not eliminate, the risk of tipover.

We supply attachment hardware with your order but some applications may need different/additional hardware. Manufacturer assumes no liability for improper installation or excessive loads placed on screws, brackets or straps.

19½" Wallingford Linen

19½" wide
70" tall

21" or 18" front-to-back
optional crown adds 1" to height

