

### Specification Sheets for Montlake View Vanities.

#### SPECIFICATION VARIANCES

Dimensions on finished vanities may vary slightly from those shown on these specification sheets due to variability in construction materials.

Our products are engineered to maintain close dimensional tolerances but variability in manufacturing materials can change dimensions slightly (normally within  $\pm 1/8"$  but occasionally up to  $\pm 3/16"$ ).

In most applications these slight variations will have no impact upon installation, appearance or function. However, when planning and finishing a space for a built in vanity, **do not frame or finish the space before measuring the actual cabinet!**

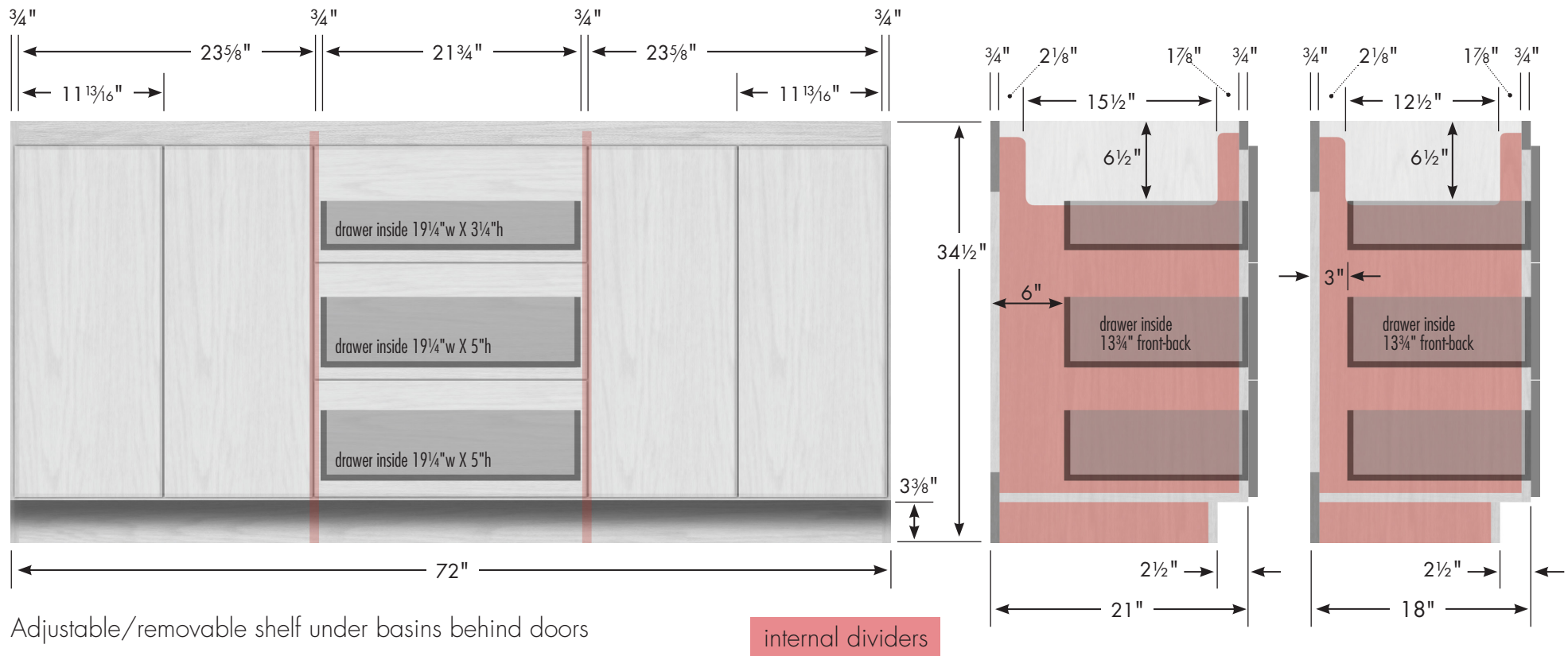
We can not be responsible for any expenses incurred as a result of the end user or contractor not following this guideline.

REV: 2018-07

# STRASSER

Specifications:

**Montlake View Vanity**  
72"w, 34½"h, double basin



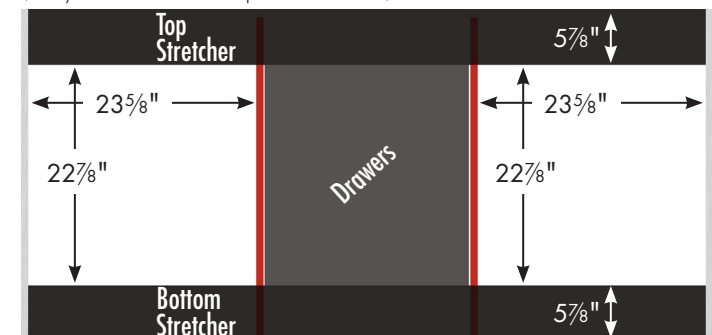
## 72" Montlake View Vanity

72" wide  
34½" tall  
21" or 18" front-to-back



2

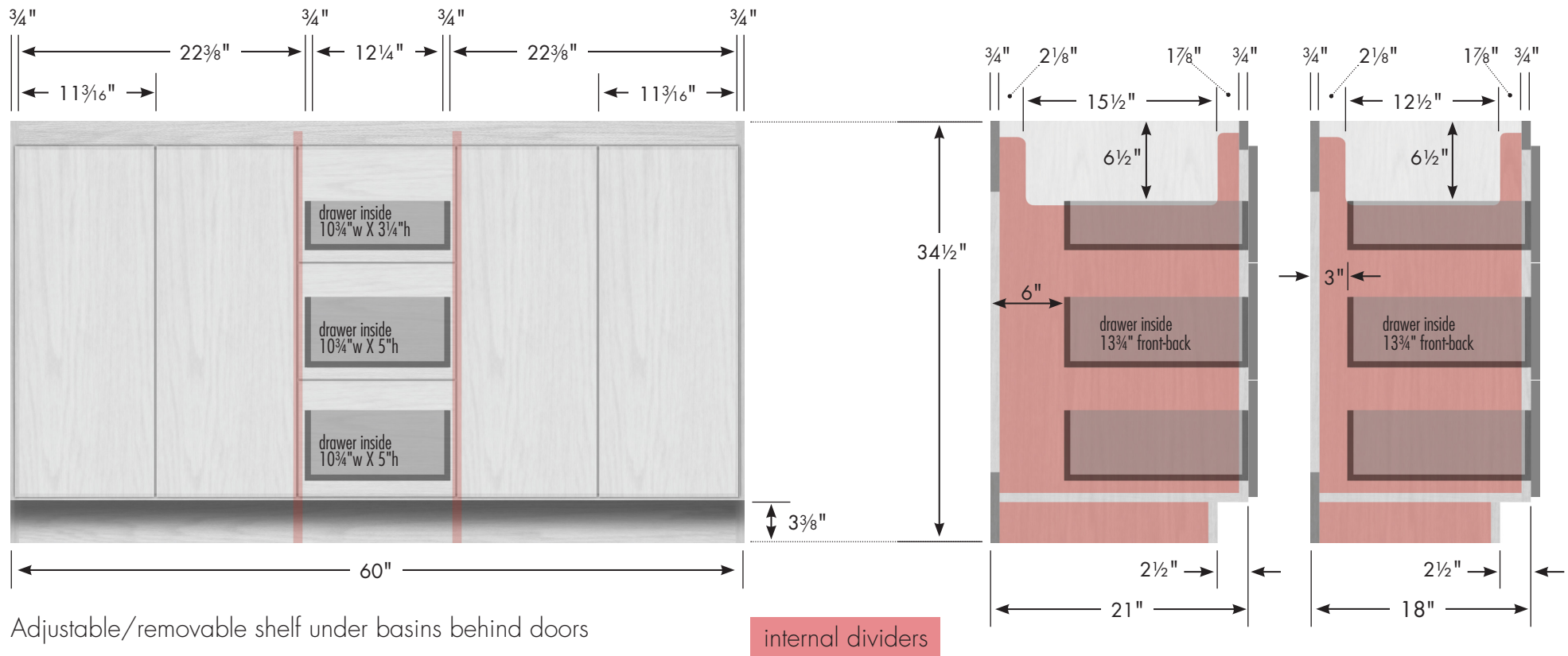
Vanity back clear openings for plumbing  
(may need to cut adjustable shelf)



# STRASSER

Specifications:

**Montlake View Vanity**  
60"w, 34½"h, double basin

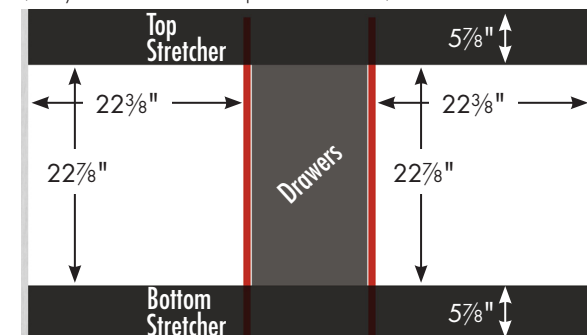


**60" Montlake View Vanity**  
**Double Basin**  
60" wide  
34½" tall  
21" or 18" front-to-back



3

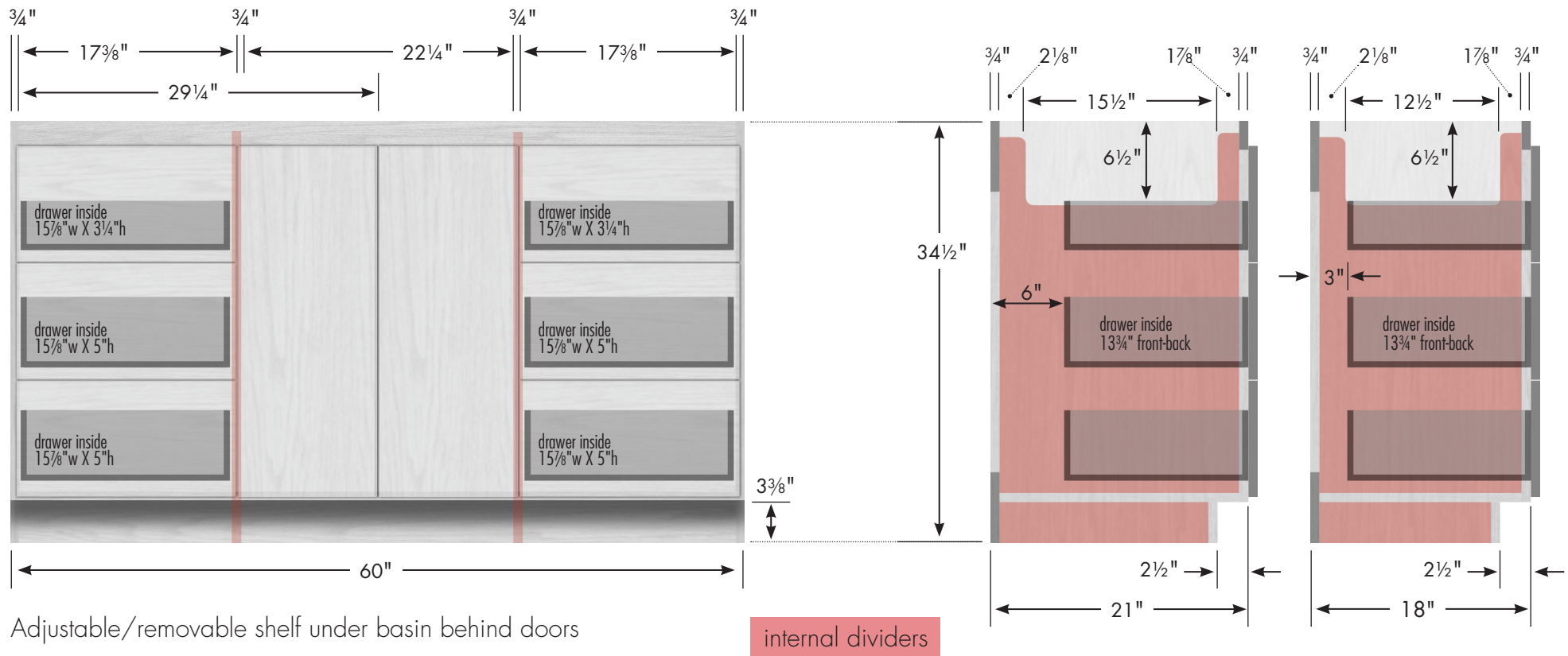
Vanity back clear openings for plumbing  
(may need to cut adjustable shelf)



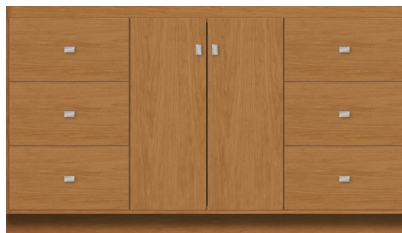
# STRASSER

Specifications:

**Montlake View Vanity**  
60"w, 34½"h, center basin

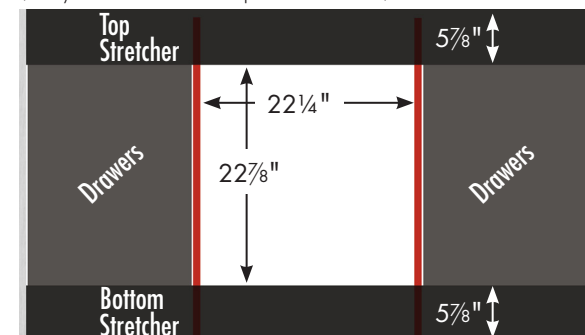


**60" Montlake View Vanity**  
**Center Basin**  
60" wide  
34½" tall  
21" or 18" front-to-back



4

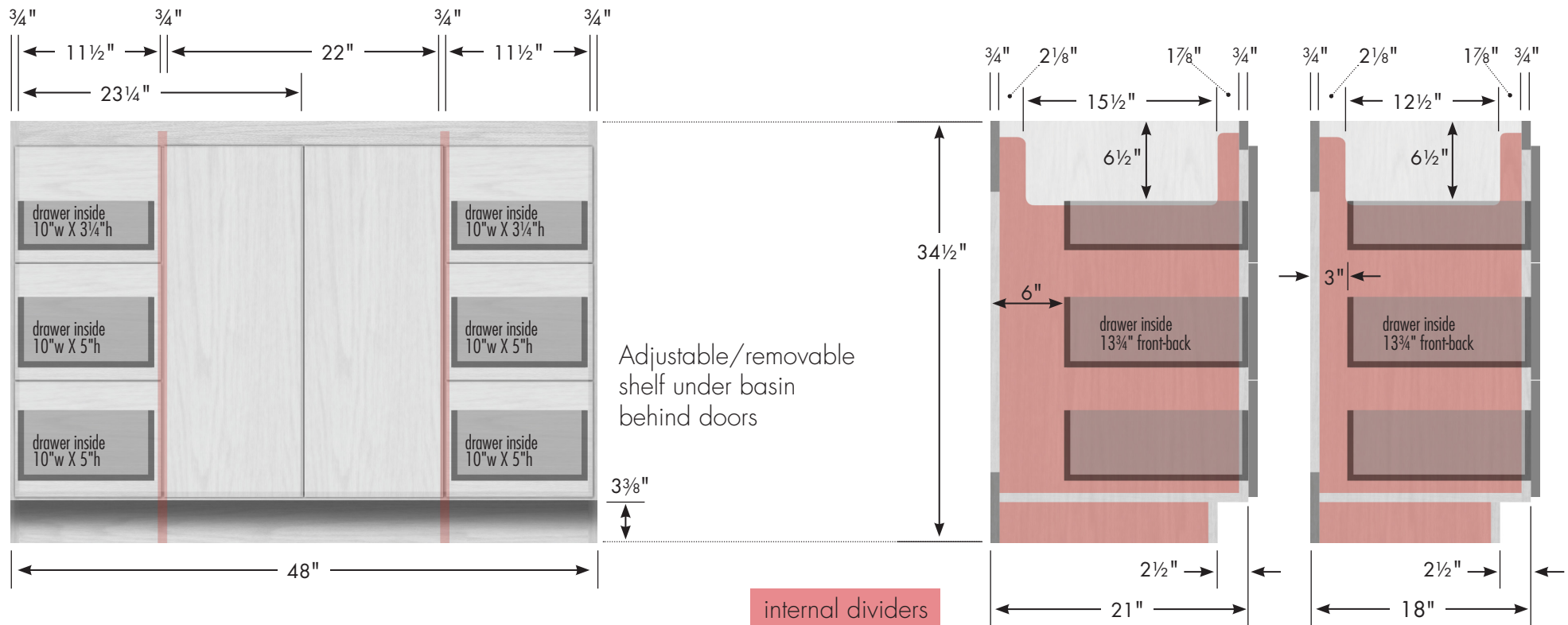
Vanity back clear openings for plumbing  
(may need to cut adjustable shelf)



# STRASSER

Specifications:

**Montlake View Vanity**  
48"w, 34½"h



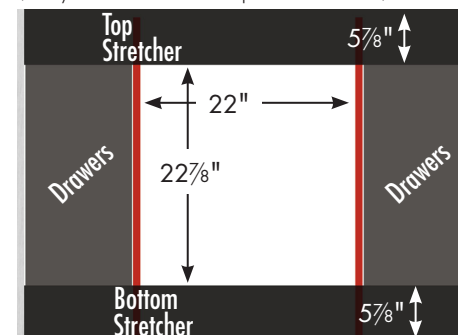
## 48" Montlake View Vanity

48" wide  
34½" tall  
21" or 18" front-to-back



5

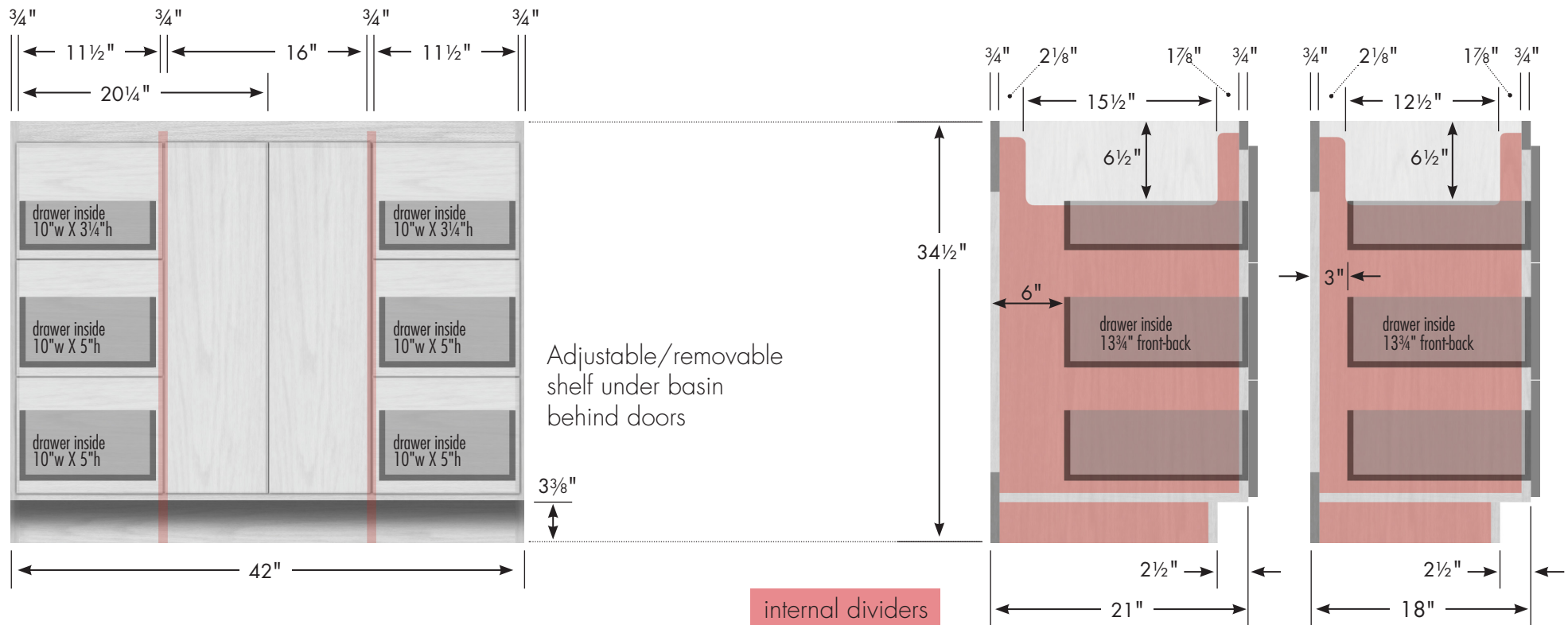
Vanity back clear openings for plumbing  
(may need to cut adjustable shelf)



# STRASSER

Specifications:

**Montlake View Vanity**  
42"w, 34½"h

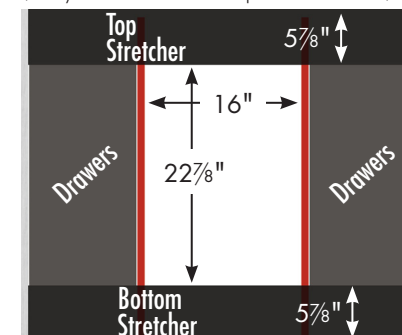


## 42" Montlake View Vanity

42" wide  
34½" tall  
21" or 18" front-to-back



Vanity back clear openings for plumbing  
(may need to cut adjustable shelf)

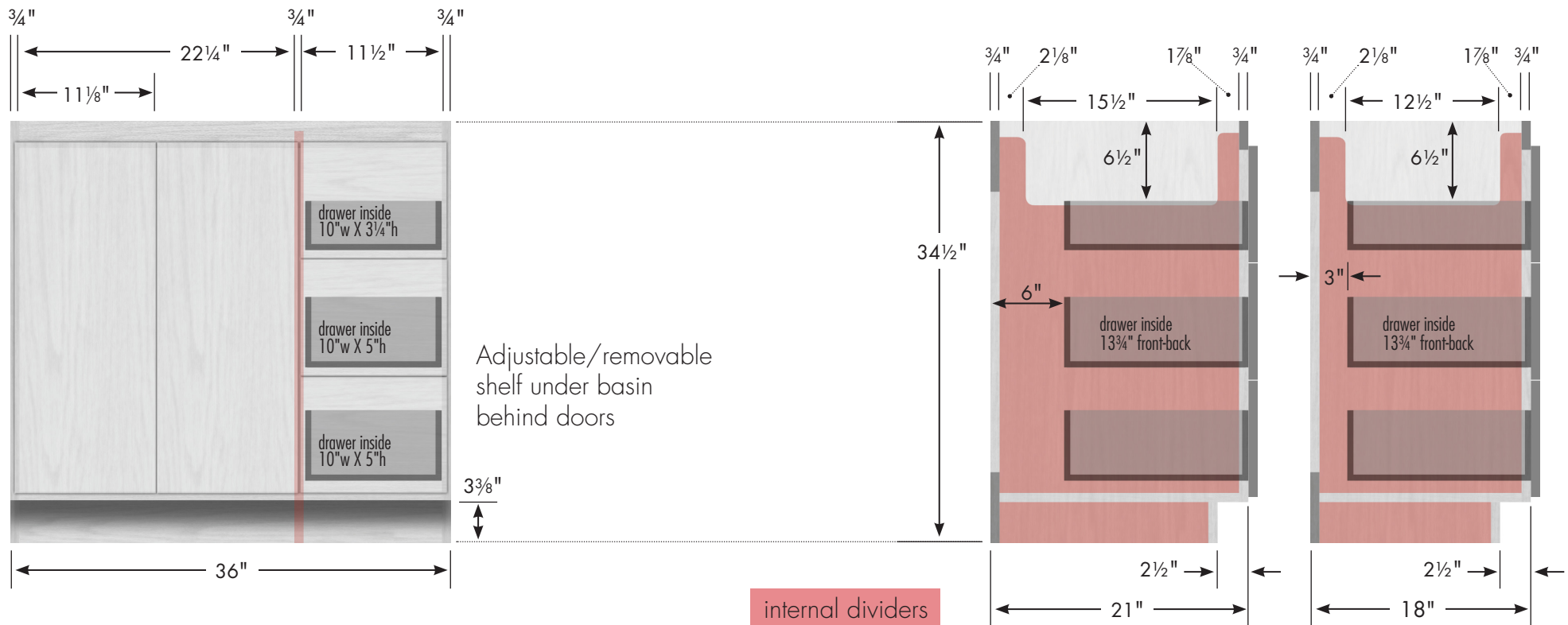




# STRASSER

Specifications:

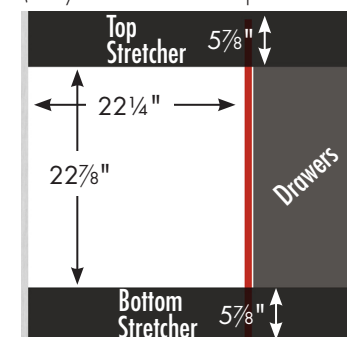
**Montlake View Vanity**  
36"w, 34½"h, drawers right



**36" Montlake View Vanity**  
**Drawers Right**  
36" wide  
34½" tall  
21" or 18" front-to-back



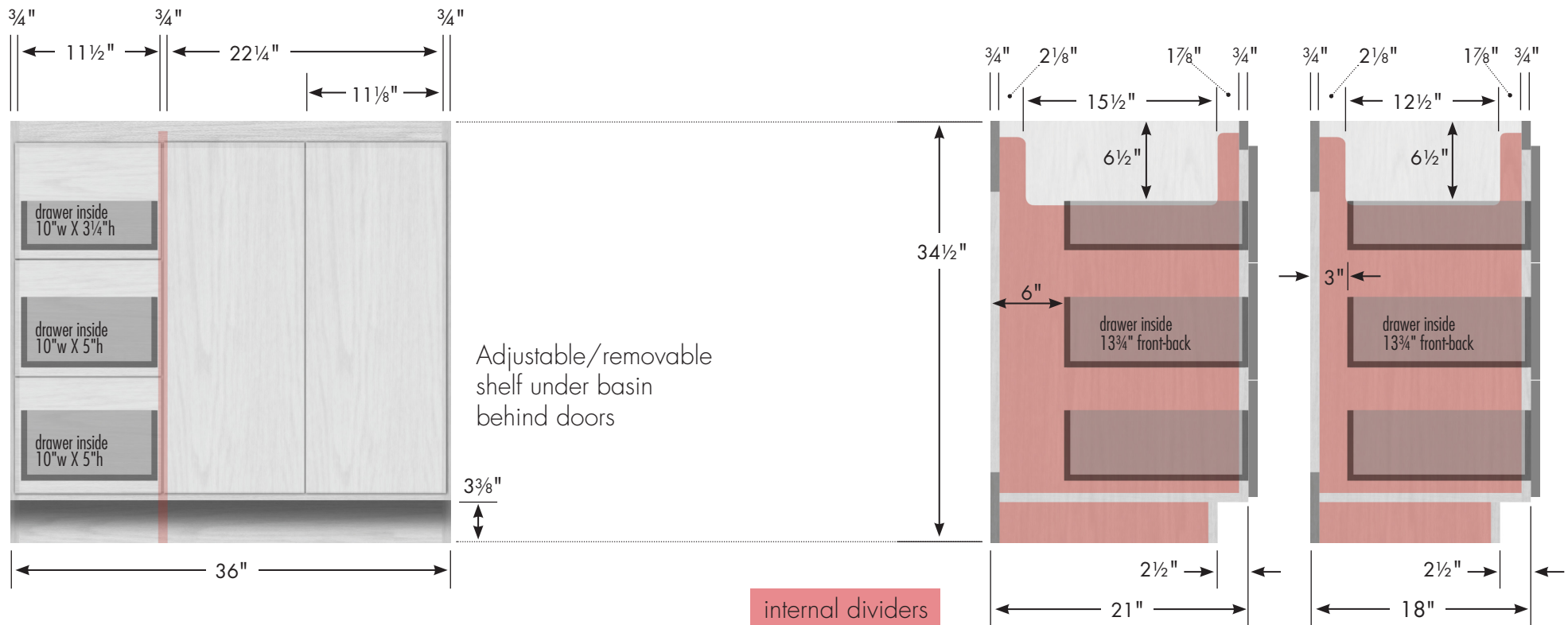
Vanity back clear openings for plumbing  
(may need to cut adjustable shelf)



# STRASSER

Specifications:

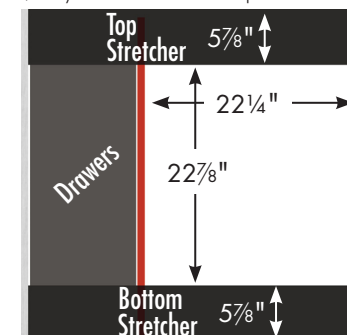
**Montlake View Vanity**  
**36"w, 34½"h, drawers left**



**36" Montlake View Vanity**  
**Drawers Left**  
 36" wide  
 34½" tall  
 21" or 18" front-to-back



Vanity back clear openings for plumbing  
 (may need to cut adjustable shelf)

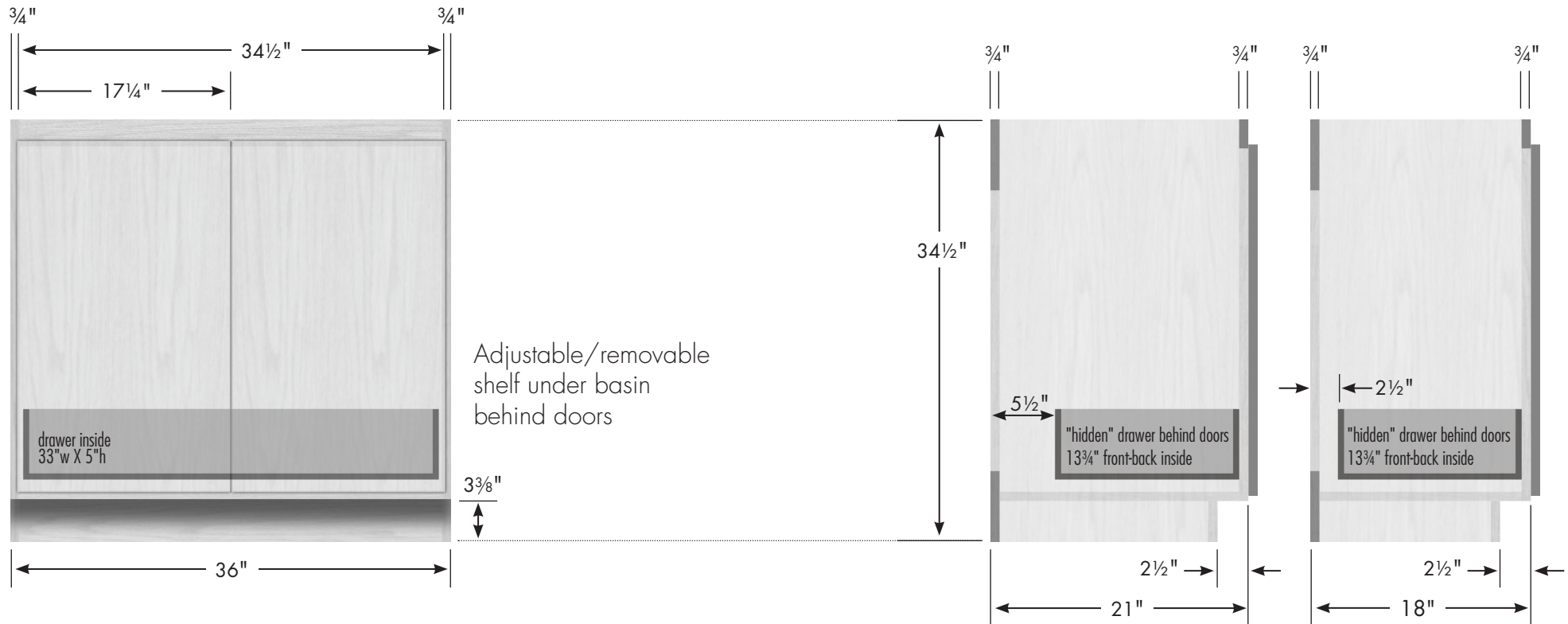




# STRASSER

Specifications:

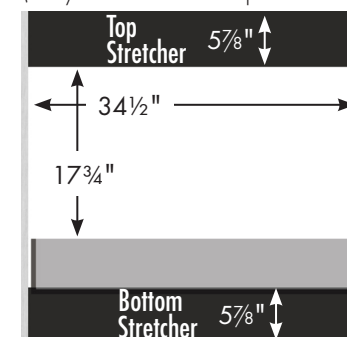
**Montlake View Vanity**  
**36" w, 34½" h, no side drawers**



**36" Montlake View Vanity**  
**No Side Drawers**  
 36" wide  
 34½" tall  
 21" or 18" front-to-back



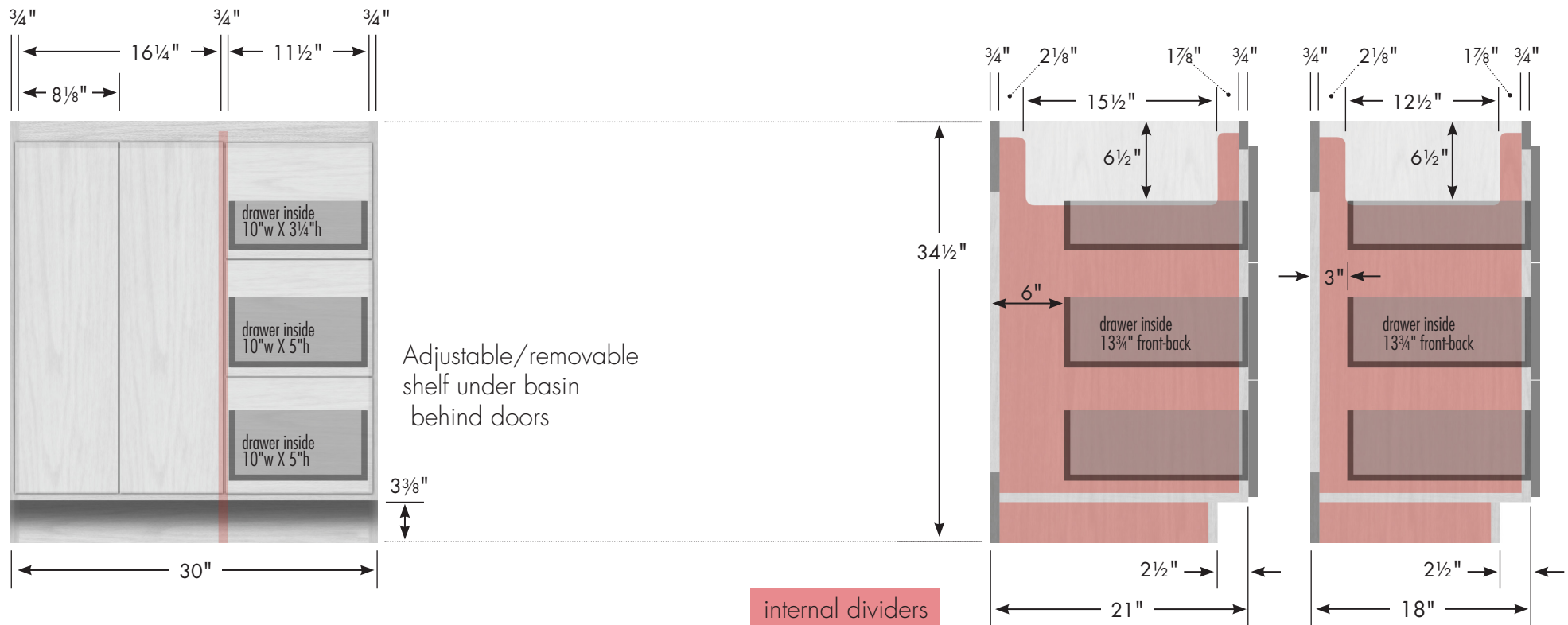
Vanity back clear openings for plumbing  
 (may need to cut adjustable shelf)



# STRASSER

Specifications:

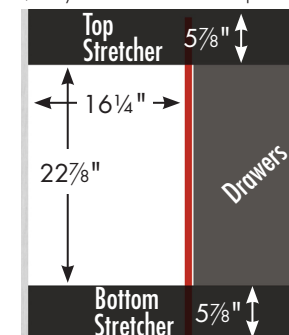
**Montlake View Vanity**  
30"w, 34½"h, drawers right



**30" Montlake View Vanity**  
**Drawers Right**  
30" wide  
34½" tall  
21" or 18" front-to-back



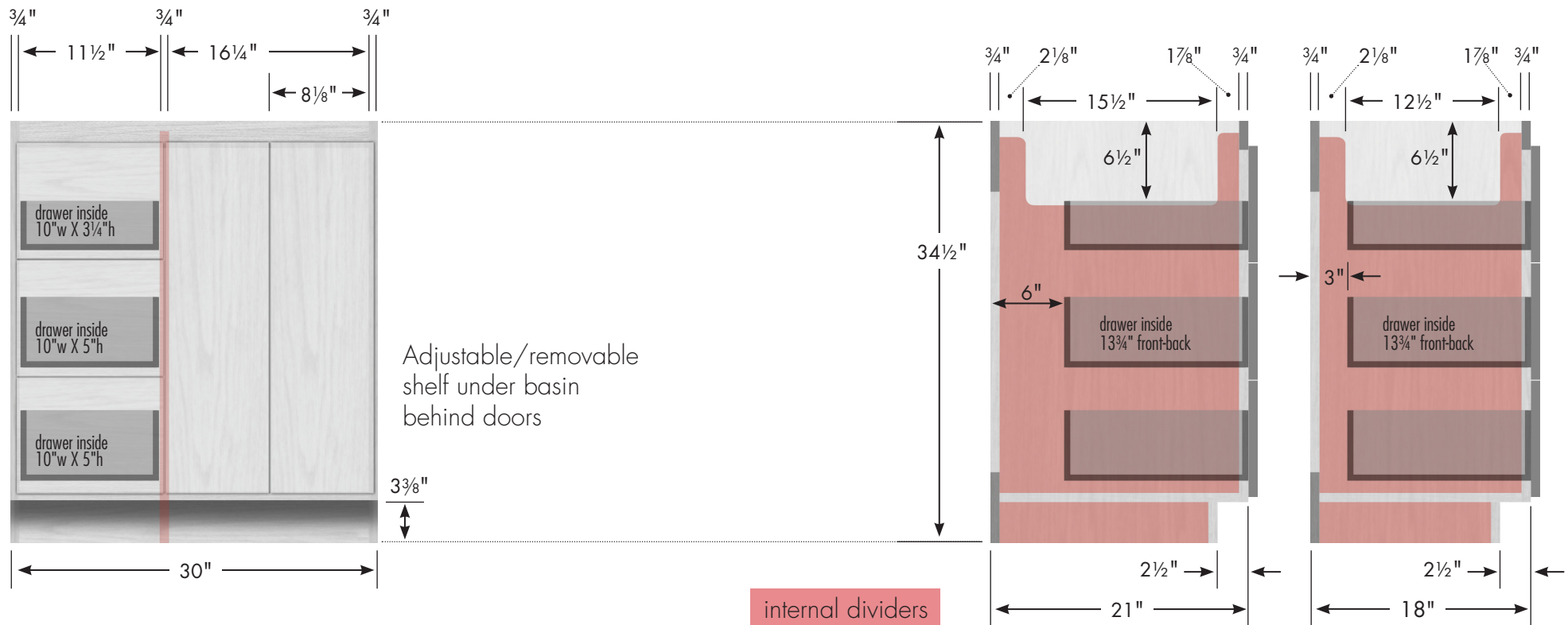
Vanity back clear openings for plumbing  
(may need to cut adjustable shelf)



# STRASSER

Specifications:

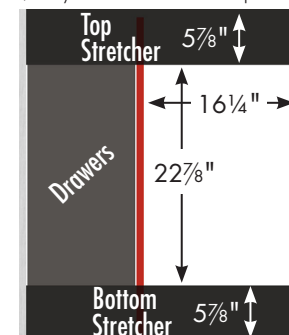
**Montlake View Vanity**  
30"w, 34½"h, drawers left



**30" Montlake View Vanity**  
**Drawers Left**  
30" wide  
34½" tall  
21" or 18" front-to-back



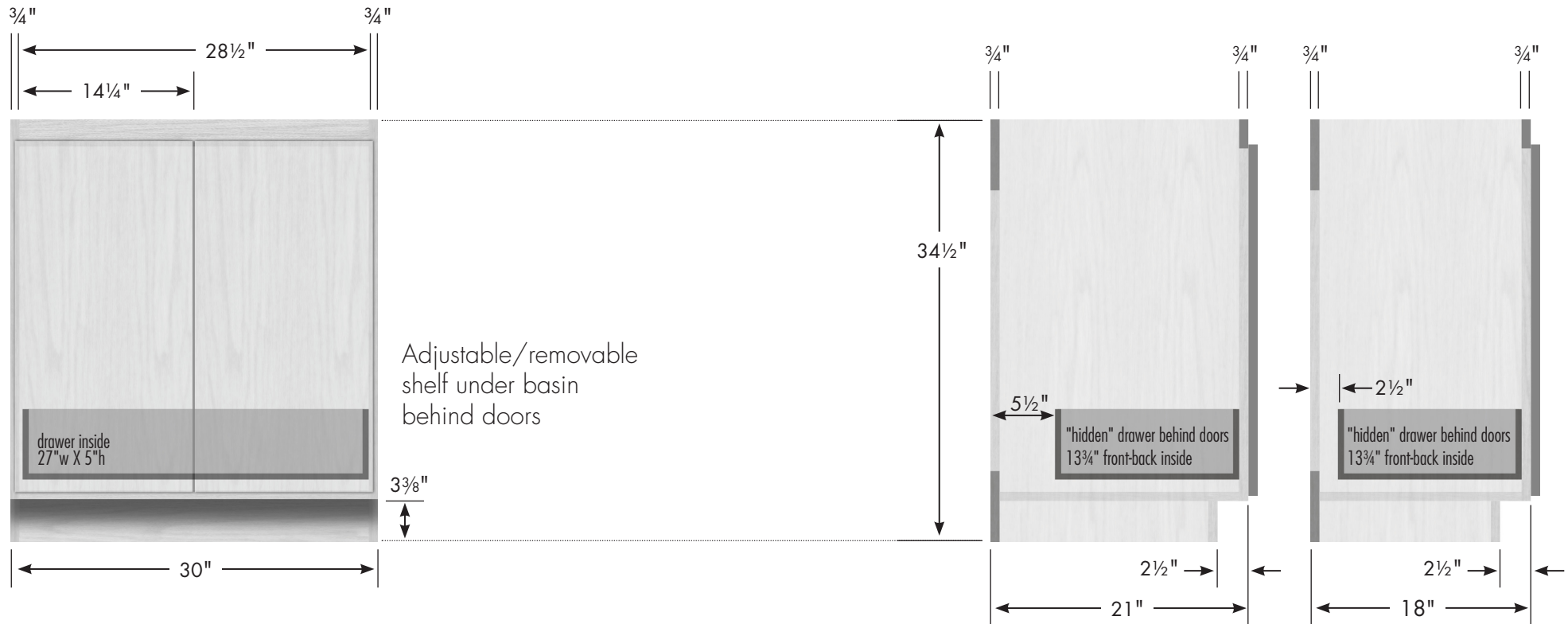
Vanity back clear openings for plumbing  
(may need to cut adjustable shelf)



# STRASSER

Specifications:

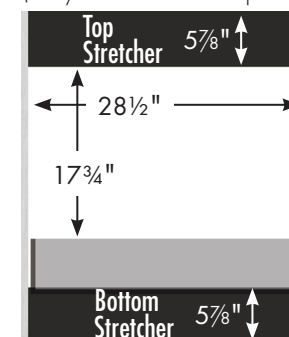
**Montlake View Vanity**  
**30"w, 34½"h, no side drawers**



**30" Montlake View Vanity**  
**No Side Drawers**  
 30" wide  
 34½" tall  
 21" or 18" front-to-back



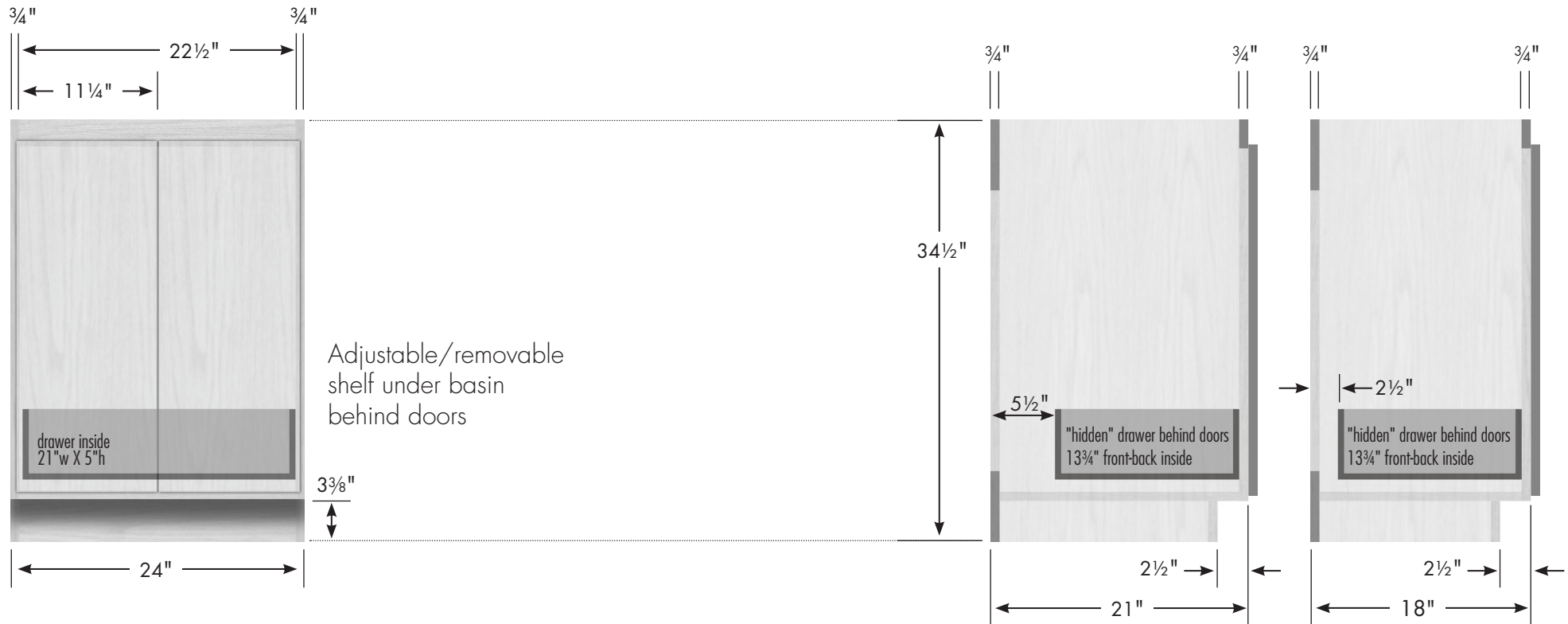
Vanity back clear openings for plumbing  
 (may need to cut adjustable shelf)



# STRASSER

Specifications:

**Montlake View Vanity**  
24"w, 34½"h



**24" Montlake View Vanity**  
24" wide  
34½" tall  
21" or 18" front-to-back



Vanity back clear openings for plumbing  
(may need to cut adjustable shelf)

