

Specification Sheets for Wall Storage

SPECIFICATION VARIANCES

Dimensions on finished vanities may vary slightly from those shown on these specification sheets due to variability in construction materials.

Our products are engineered to maintain close dimensional tolerances but variability in manufacturing materials can change dimensions slightly (normally within $\pm 1/8$ " but occasionally up to $\pm 3/16$ ").

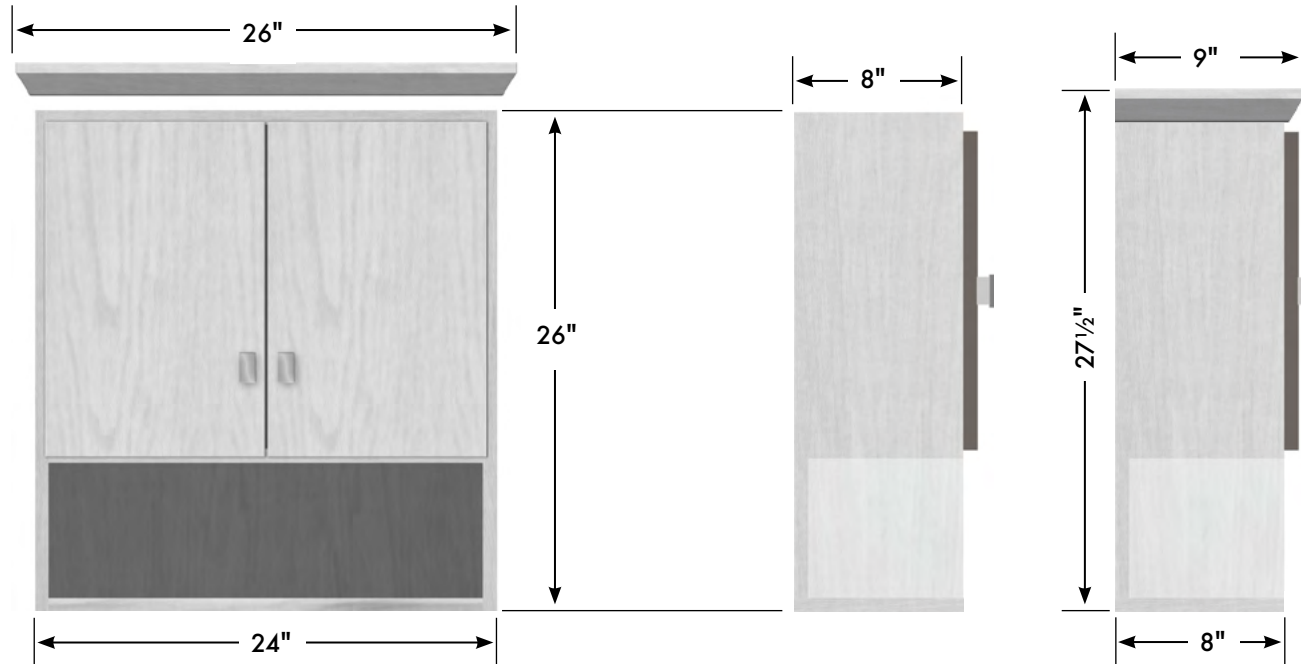
In most applications these slight variations will have no impact upon installation, appearance or function. However, when planning and finishing a space for a built in vanity, **do not frame or finish the space before measuring the actual cabinet!**

We can not be responsible for any expenses incurred as a result of the end user or contractor not following this guideline.

REV: 2022-10

STRASSER

Specifications:
24" Traditional
Overjohn



1 adjustable position shelf behind the doors; 3/4" material finished to match the cabinet.

24" Traditional Overjohn

24" wide

26" tall

8" front-to-back

with optional crown:

26" wide, 27 1/2" tall, 9" front-to-back

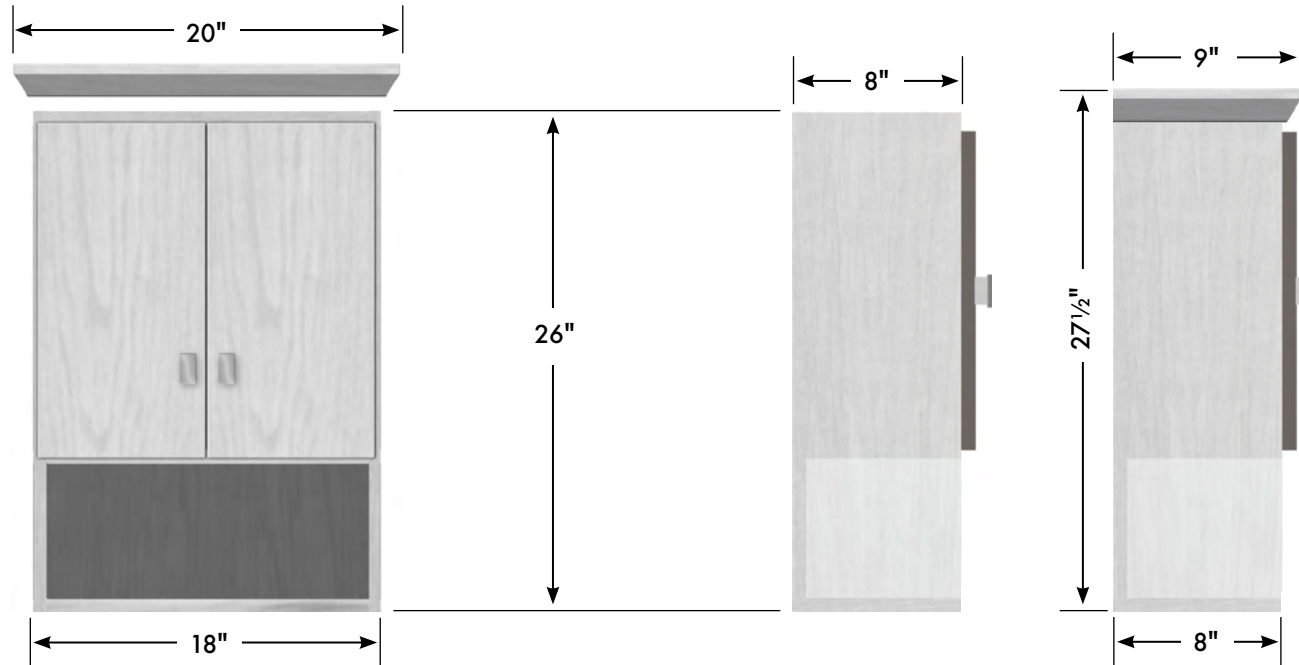


↔ with optional crown

2

STRASSER

Specifications:
18" Traditional
Overjohn



1 adjustable position shelf behind the doors; 3/4" material finished to match the cabinet.

18" Traditional Overjohn

18" wide

26" tall

8" front-to-back

with optional crown:

20" wide, 27 1/2" tall, 9" front-to-back

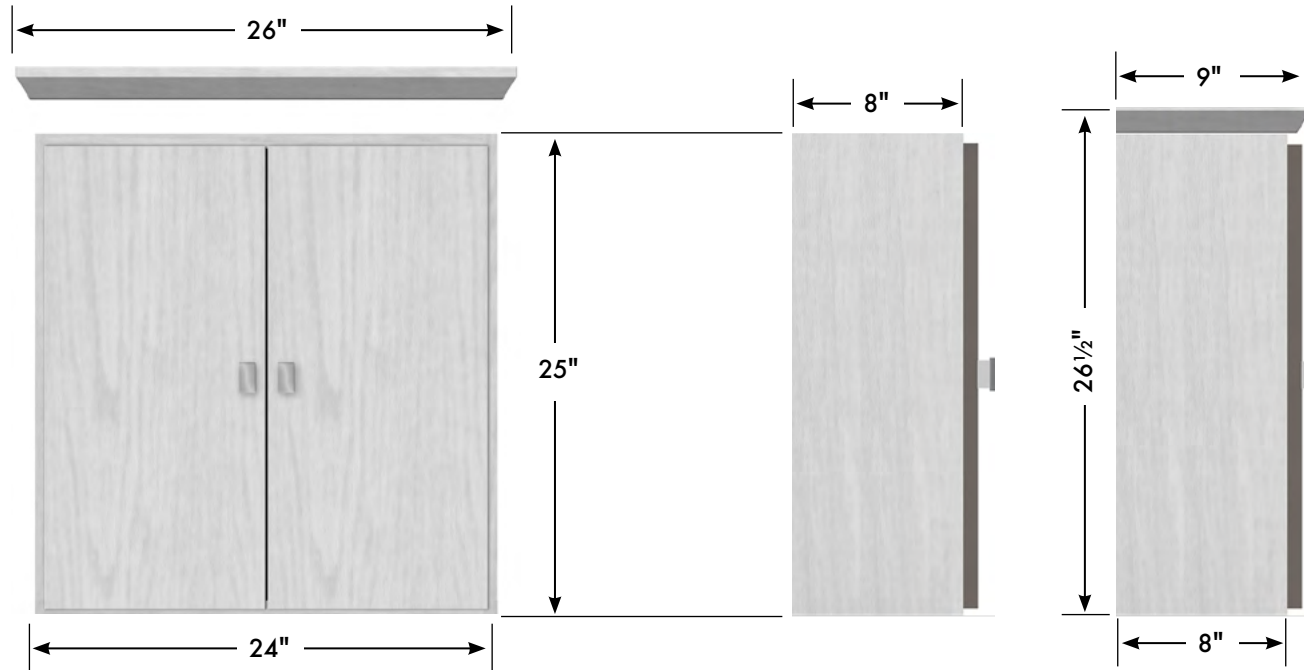


← with optional crown

3

STRASSER

Specifications:
24" Traditional
Cubby



2 adjustable position shelves; 3/8" thick
frosted acrylic, radiused front edge.

24" Traditional Cubby

24" wide

25" tall

8" front-to-back

with optional crown:

26" wide, 26 1/2" tall, 9" front-to-back

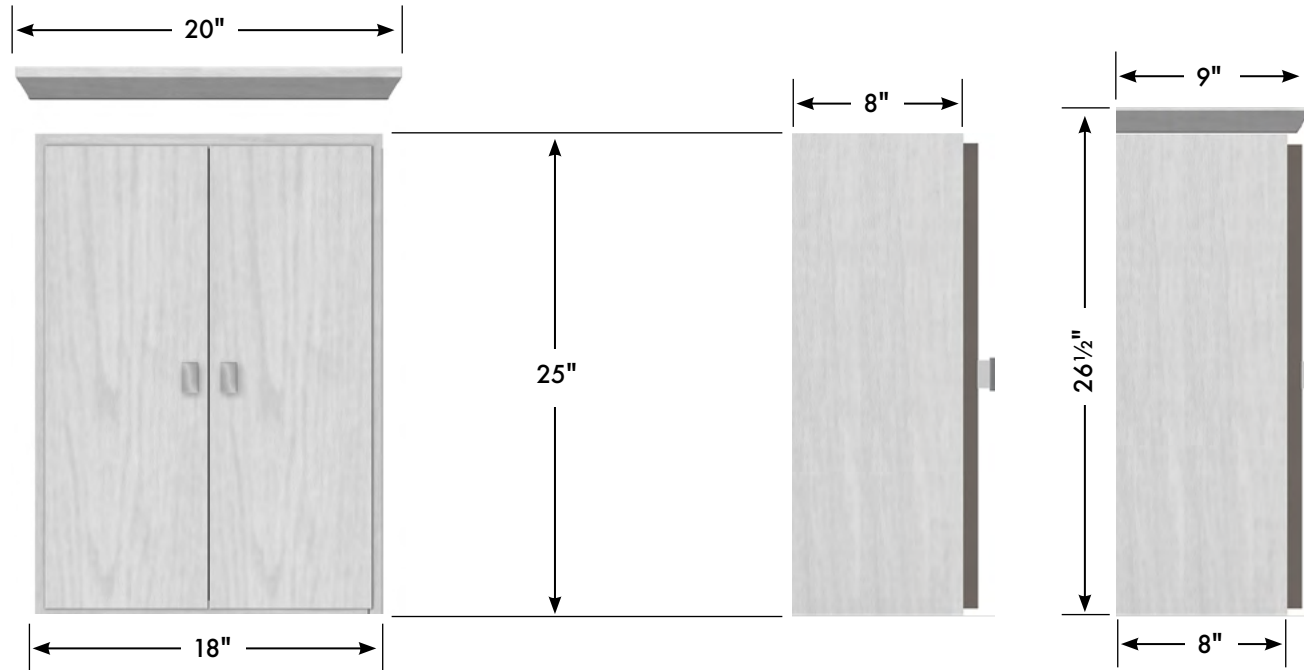


← with optional crown

4

STRASSER

Specifications:
18" Traditional
Cubby



2 adjustable position shelves; 3/8" thick frosted acrylic, radiused front edge.

18" Traditional Cubby
18" wide
25" tall
8" front-to-back
with optional crown:
26" wide, 26 1/2" tall, 9" front-to-back



⇐ with optional crown

5