

STRASSER





- **The STRASSER Story**
- **Superior Quality**
- **The Basics**
- **The Collections**
- **Design Your Own Vanity**
- **Complementary Products**
- **Resources**
- **Support**

The STRASSER Story

- Andy Hedreen and Robert Strasser started making a line of bathroom accessories in 1982, starting with a line of oak bathroom accessories including toilet seats, soap dishes, tissue holders, towel bars, and switch plate covers.
- In the 1990's, the company's offerings had expanded to include medicine cabinets, mirrors, and finally solid wood vanities, now the mainstay of the brand.
- In 2022, Jeff Meehan was appointed President of STRASSER
- Forty years later, STRASSER is still owned by the Hedreen family in a modern facility in Woodinville, WA outside of Seattle and proudly craft bathroom furniture and accessories in the United States.



Superior Quality

- STRASSER manufactures high-quality, luxury freestanding and wall mounted wood bathroom furniture across a range of styles, sizes, configurations, species, and finishes, with well over 50,000 product combinations.
- All furniture is built to order using cherry, maple, oak, walnut and alder hardwoods sourced in the US and Canada
- Furniture features solid-wood dovetail construction, soft-close doors and drawers and solid-wood legs.



The Basics

Collections:

- Alki
- Belltown
- Sodo
- Newhalem
- Wallingford
- Ravenna
- Montlake



The Basics

Door / Drawer Styles:



Slab/Slab



Shaker



Deco Miter



Ogee Miter



Tiered Miter



Ultraline

The Basics

Finishes:



Natural Cherry



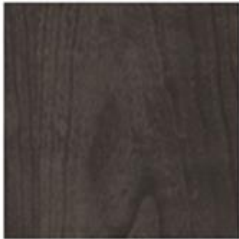
Cinnamon Cherry



Pecan Cherry



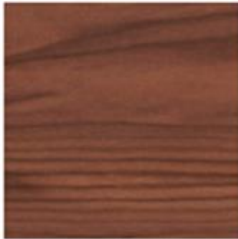
Chocolate Cherry



Smoky Cherry



Natural Maple



Walnut



Natural Oak



Dusky Oak



Midnight Oak



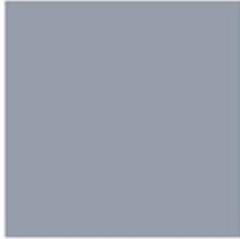
Rift White Oak



Silver Oak



Satin White



Satin Silver



Powder Gray



Satin Black



Lapis Night



NW Green



Alki

Versatile in function as well as in style for contemporary or transitional baths.

STYLES:

Alki Essence (Bottom Drawer)

Alki Spa (Open Bottom)

Alki View (No Drawer Under the Door)



- Made from solid wood and veneer
- Soft-close European hinges
- Soft-glide European drawer mounts
- Available from 24" – 72" (No Spa 72")
- Eighteen Finish options

STRASSER

Specifications:

Alki[®] Linen
19½"w, 70"h

SPECIAL NOTE

Serious or fatal crushing injuries can occur from a linen cabinet tipping over.

To help prevent tipover:

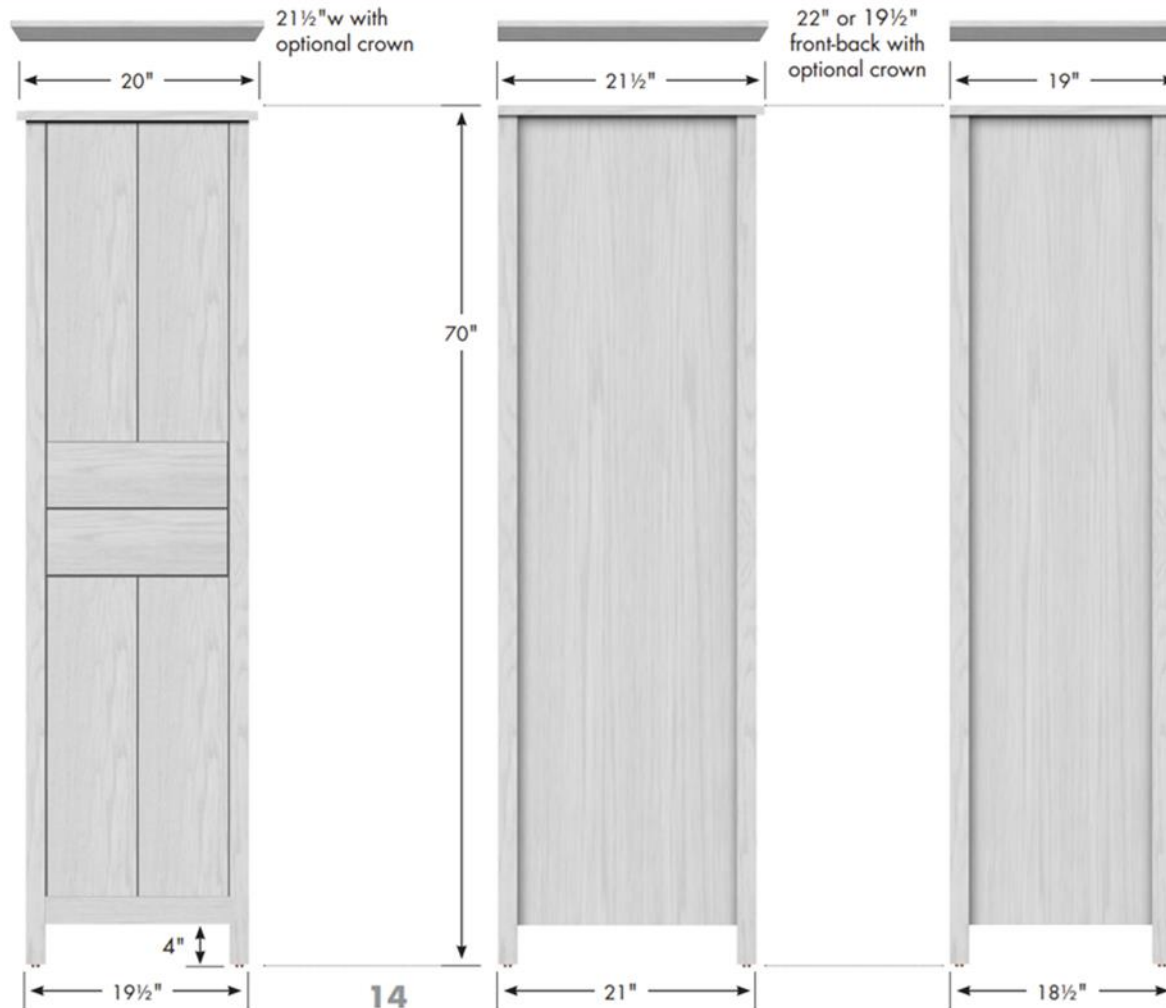
- Install provided tipover restraint
- Place heaviest items in the lower drawers
- Do not place heavy objects on top of this product
- Never allow children to climb or hang on drawers, doors or shelves
- Do not open more than one drawer at a time.

Use of tipover restraints may only reduce, but not eliminate, the risk of tipover.

We supply attachment hardware with your order but some applications may need different/additional hardware. Manufacturer assumes no liability for improper installation or excessive loads placed on screws, brackets or straps.

19½" Alki[®] Linen

19½" wide
70" tall
21" or 18½" front-to-back
optional crown adds 1" to height





Belltown

Sleek on the outside, organized on the inside, Belltown offers the best of both worlds.

- U-Shaped Drawers maximize storage around plumbing
- Made from solid wood and veneer
- Soft-close European hinges
- Soft-glide European drawer mounts
- Available 24", 30", 36" (Three Drawer)
- Available 42", 48" (Six Drawer)
- Top working drawer
- Eighteen Finish options

STRASSER

Specifications:

Belltown Linen
19½"w, 70"h

SPECIAL NOTE

Serious or fatal crushing injuries can occur from a linen cabinet tipping over.

To help prevent tipover:

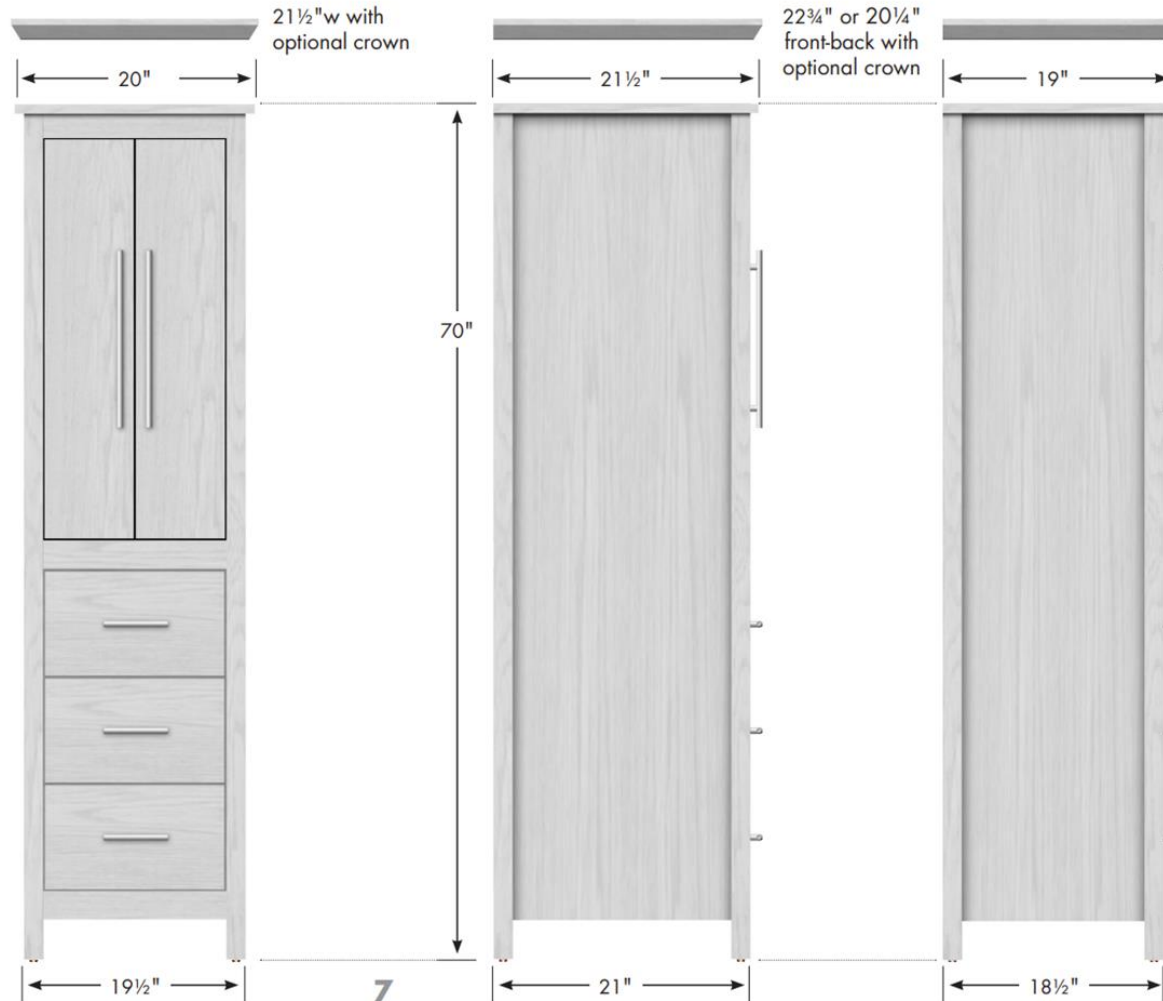
- Install provided tipover restraint
- Place heaviest items in the lower drawers
- Do not place heavy objects on top of this product
- Never allow children to climb or hang on drawers, doors or shelves
- Do not open more than one drawer at a time.

Use of tipover restraints may only reduce, but not eliminate, the risk of tipover.

We supply attachment hardware with your order but some applications may need different/additional hardware. Manufacturer assumes no liability for improper installation or excessive loads placed on screws, brackets or straps.

19½" Belltown Linen

19½" wide
70" tall
21" or 18½" front-to-back
optional crown shown



7



SoDo

With modern clean exact design, SoDo is contemporary and edgy with sleek lines for strong appeal.

STYLES:

SoDo (Available from 24" -60")

SoDo Town (Available 24', 30", 36")

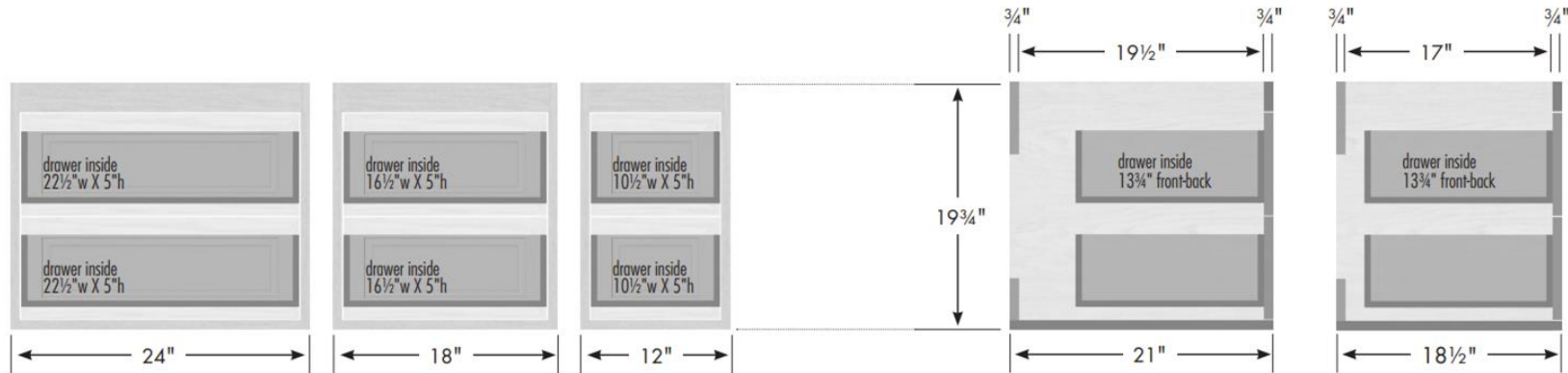


- Made from solid wood and veneer
- Soft-close European hinges
- Contemporary Inset Mounted Doors/Drawers
- Available from 24" – 72"
- Eighteen Finish options

STRASSER

Specifications:

SoDo Drawer Banks
24", 18" & 12" wide, 19³/₄"h



**24" SoDo
Drawer Bank**
24" wide
19³/₄" tall
21" or 18¹/₂" front-to-back



**18" SoDo
Drawer Bank**
18" wide
19³/₄" tall
21" or 18¹/₂" front-to-back



**12" SoDo
Drawer Bank**
12" wide
19³/₄" tall
21" or 18¹/₂" front-to-back





Newhalem

A wave of nostalgia with a dash of retro-chic reveals itself in Newhalem's tapered legs, contiguous side panels, and asymmetrical rails.

- Made from solid wood and veneer
- Soft-close European hinges
- Soft-glide European drawer mounts
- Available 24" – 72"
- Slab Only
- Eighteen Finish options

STRASSER

Specifications:

Newhalem Linen
19½"w, 70"h

SPECIAL NOTE

Serious or fatal crushing injuries can occur from a linen cabinet tipping over.

To help prevent tipover:

- Install provided tipover restraint
- Place heaviest items in the lower drawers
- Do not place heavy objects on top of this product
- Never allow children to climb or hang on drawers, doors or shelves
- Do not open more than one drawer at a time.

Use of tipover restraints may only reduce, but not eliminate, the risk of tipover.

We supply attachment hardware with your order but some applications may need different/additional hardware. Manufacturer assumes no liability for improper installation or excessive loads placed on screws, brackets or straps.

19½" Newhalem Linen

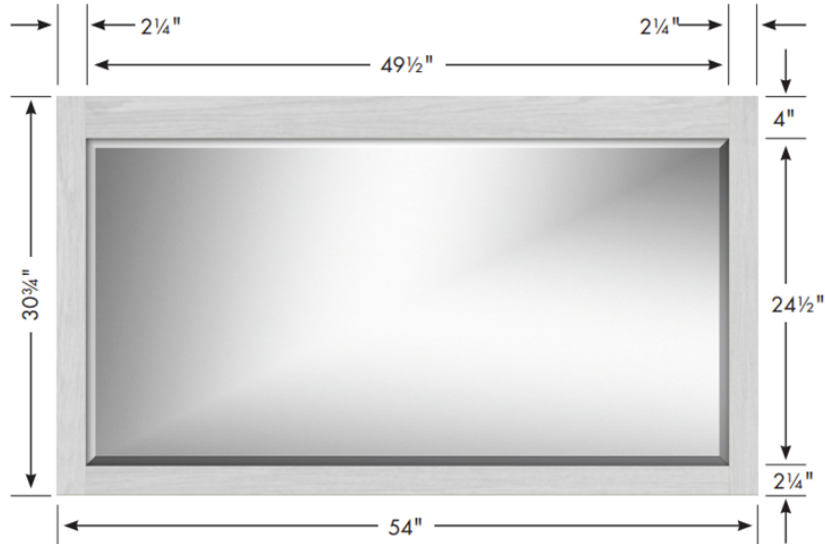
19½" wide
70" tall
21½" or 19" front-to-back



STRASSER

Specifications:

Newhalem Mirror
54"w, 30³/₄"h



SPECIAL NOTE

These large mirrors with 1/4" plate glass are especially heavy and require careful consideration and execution in hanging.

We include attached cleats but you may need to re-install them so that spacing will allow attachment to structural wall studs.

Consult with a professional if you are not familiar with construction practices.

Newhalem Mirror
54" wide
30³/₄" tall





Wallingford

Embrace the traditional appeal and authenticity of gentle curves, fluid lines and turned legs or add a touch of simplicity with a modern door.

STYLES:

Wallingford (Doors & Bottom Drawer)

Wallingford View (Doors & No Bottom Drawer)



- Made from solid wood and veneer
- Soft-close European hinges
- Soft-glide European drawer mounts
- Available from 24" – 72"
- Eighteen Finish options

STRASSER

Specifications:

Wallingford Linen
19½"w, 70"h

SPECIAL NOTE

Serious or fatal crushing injuries can occur from a linen cabinet tipping over.

To help prevent tipover:

- Install provided tipover restraint
- Place heaviest items in the lower drawers
- Do not place heavy objects on top of this product
- Never allow children to climb or hang on drawers, doors or shelves
- Do not open more than one drawer at a time.

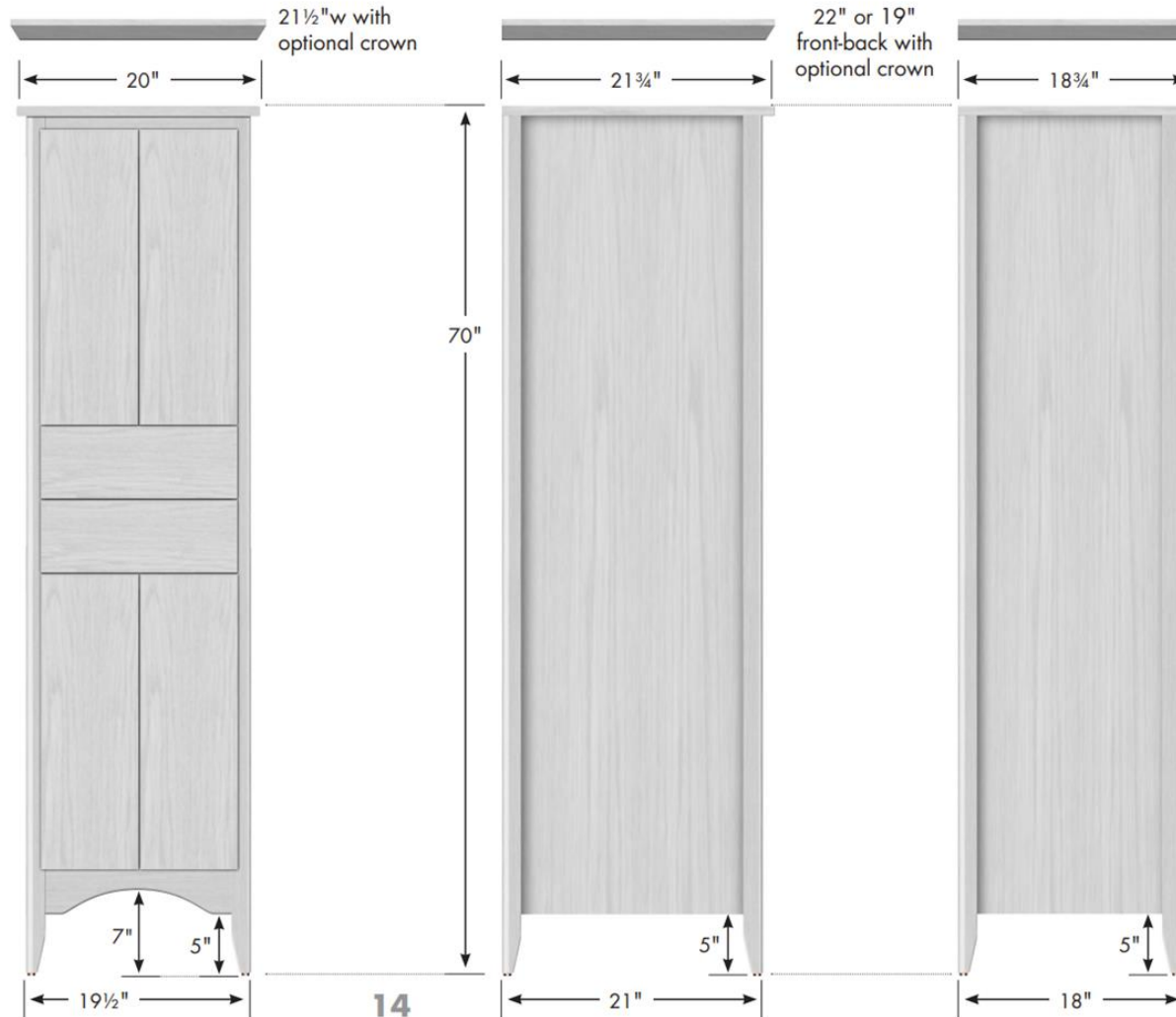
Use of tipover restraints may only reduce, but not eliminate, the risk of tipover.

We supply attachment hardware with your order but some applications may need different/additional hardware. Manufacturer assumes no liability for improper installation or excessive loads placed on screws, brackets or straps.

19½" Wallingford Linen

19½" wide
70" tall

21" or 18" front-to-back
optional crown adds 1" to height





Ravenna

Ravenna's notion of faux legs and crescent toe kick combine with clean lines for a traditional look that hints of modern refinement.

STYLES:

Ravenna (Doors & Bottom Drawer)

Ravenna View (Doors & No Bottom Drawer)



- Made from solid wood and veneer
- Soft-close European hinges
- Soft-glide European drawer mounts
- Available from 24" – 72"
- Sixteen Finish options

STRASSER

Specifications:

Ravenna Linen
19½"w, 70"h

SPECIAL NOTE

Serious or fatal crushing injuries can occur from a linen cabinet tipping over.

To help prevent tipover:

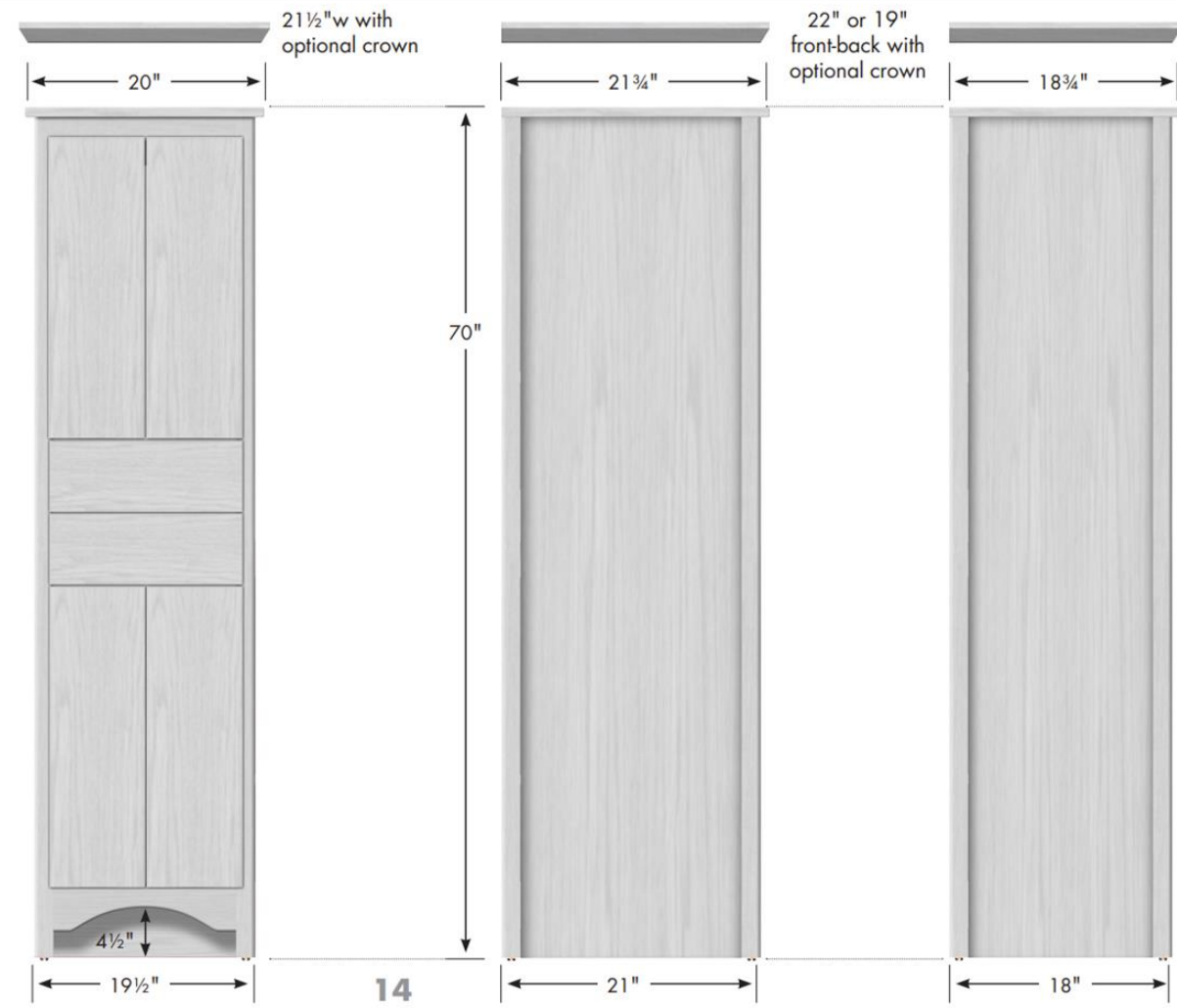
- Install provided tipover restraint
- Place heaviest items in the lower drawers
- Do not place heavy objects on top of this product
- Never allow children to climb or hang on drawers, doors or shelves
- Do not open more than one drawer at a time.

Use of tipover restraints may only reduce, but not eliminate, the risk of tipover.

We supply attachment hardware with your order but some applications may need different/additional hardware. Manufacturer assumes no liability for improper installation or excessive loads placed on screws, brackets or straps.

19½" Ravenna Linen

19½" wide
70" tall
21" or 18" front-to-back
optional crown adds 1" to height



Montlake

Graceful elegance blends with solid foundations, balancing a deep, cozy warmth with a confident edge. The promise of Montlake's simple aesthetic fashions a timeless charm that endures.

STYLES

Montlake (Doors & Bottom Drawer)

Montlake View (Doors & No Bottom Drawer)

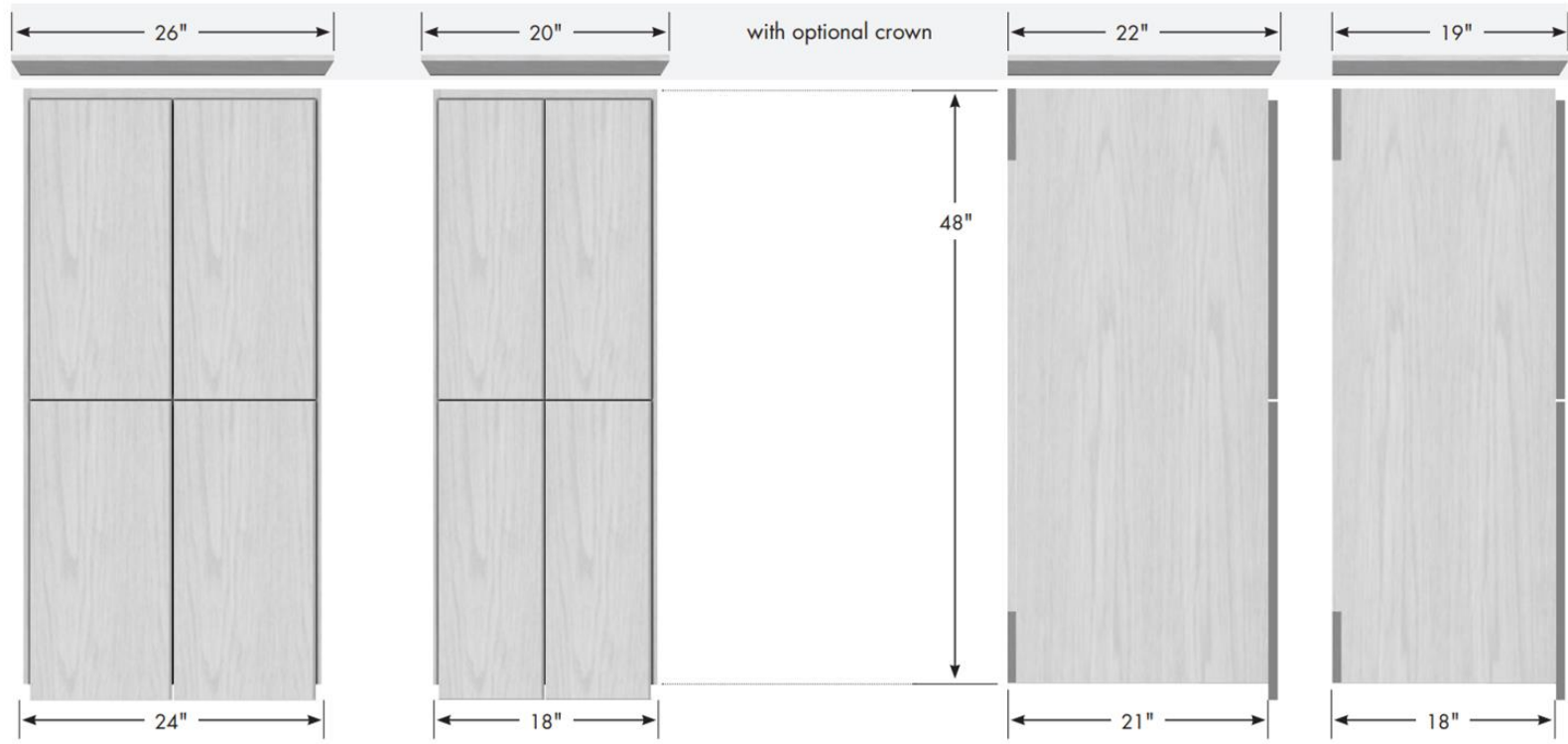
Montlake Town (Only Drawers)

- Made from solid wood and veneer
- Soft-close European hinges
- Soft-glide European drawer mounts
- Available from 24" – 72"
- Sixteen Finish options



STRASSER

Specifications:
Montlake Linen Upper
24" wide, 48" h



24" Montlake Linen Upper
24" wide
48" tall
21" or 18" front-to-back
optional crown adds 1" to height



18" Montlake Linen Upper
18" wide
48" tall
21" or 18" front-to-back
optional crown adds 1" to height



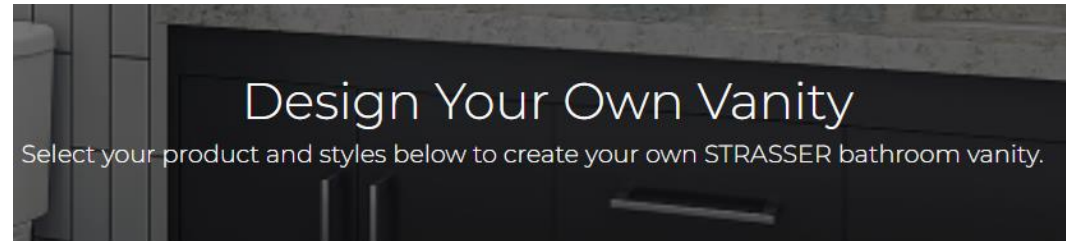
18

SPECIAL NOTE
 Serious or fatal crushing injuries can occur from a linen cabinet tipping over.
 To help prevent tipover:

- Place heaviest items in the lower drawers
- Do not place heavy objects on top of this product
- Never allow children to climb or hang on drawers, doors or shelves
- Do not open more than one drawer at a time.

Units **MUST** be securely fastened to the wall.
 • If you are not familiar with loads, holding materials, proper fastening devices/techniques; consult a professional.
 Manufacturer assumes no liability for improper installation or excessive loads placed on screws, brackets or straps.

Design Your Own Vanity Tool

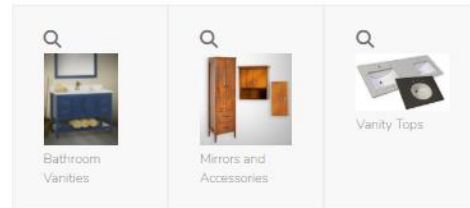


Start Here

Reset

Select **Product Type** first, then start designing. Be sure to make a selection under each heading. Click Submit to view your design.

Product Type








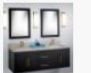















Collection

























Atki	Belltown	Montlake	Newhalem	Ravenna	Sodo
Wallingford	Accessories	Medicine Cabinets	Mirrors	Vanity Tops	

Design Your Own Vanity Tool

Style

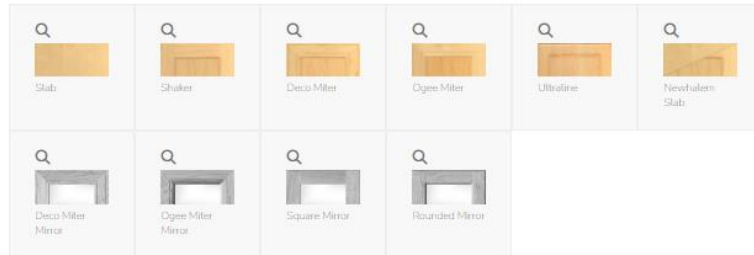
 <p>Montlake 34 1/2" Tall Vanities & Drawer Banks with Linen Uppers & Knee Drawers</p>	 <p>Montlake 32" Tall Vanities & Drawer Banks with Linen Uppers & Knee Drawers</p>	 <p>Montlake View Vanities & Drawer Banks with Linen Uppers & Knee Drawers</p>	 <p>Ravenna Vanities & Linen Cabinet</p>	 <p>Ravenna View Vanities NEW!</p>	 <p>Wallingford Vanities & Linen Cabinet</p>
 <p>Wallingford View Vanities NEW!</p>	 <p>SoDo Vanities & Drawer Banks</p>	 <p>Alki View Vanities & Linen Cabinet</p>	 <p>Alki Essence Vanities & Linen Cabinet</p>	 <p>Alki Spa Vanities & Linen Cabinet</p>	 <p>Traditional Medicine Cabinets</p>
 <p>Newhalem Vanities, Linen Cabinet & Newhalem Mirror</p>	 <p>Montlake Town Vanities NEW!</p>	 <p>Traditional Wall Storage</p>	 <p>Belltown Vanities & Linen Cabinet</p>	 <p>Contemporary Wall Storage</p>	 <p>Quartz</p>
 <p>Wall Mirror</p>	 <p>Contemporary Medicine Cabinets</p>	 <p>Granite</p>			

Select Cabinet Dimensions

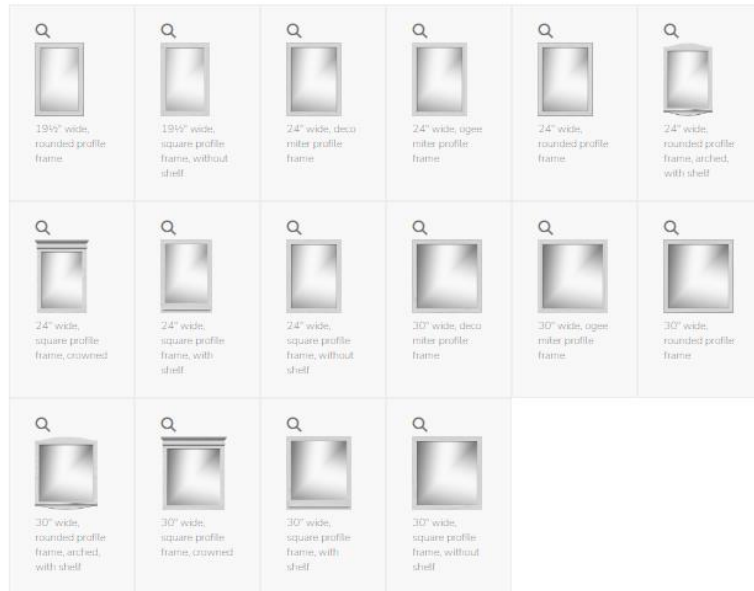
 <p>Alki Essence 19 1/2" Linen Cabinet <i>70" tall, crown optional</i></p>	 <p>Alki Essence 24" Vanity</p>	 <p>Alki Essence 30" Vanity, Drawers Left</p>	 <p>Alki Essence 30" Vanity, Drawers Right</p>	 <p>Alki Essence 30" Vanity, No Side Drawers</p>	 <p>Alki Essence 36" Vanity, Drawers Left</p>
 <p>Alki Essence 36" Vanity, Drawers Right</p>	 <p>Alki Essence 36" Vanity, No Side Drawers</p>	 <p>Alki Essence 42" Vanity</p>	 <p>Alki Essence 48" Vanity</p>	 <p>Alki Essence 60" Vanity, Center Basin</p>	 <p>Alki Essence 60" Vanity, Double Basin</p>
 <p>Alki Essence 72" Vanity</p>	 <p>Alki Spa 19 1/2" Linen Cabinet <i>70" tall, crown optional</i></p>	 <p>Alki Spa 24" Vanity</p>	 <p>Alki Spa 30" Vanity, Drawers Left</p>	 <p>Alki Spa 30" Vanity, Drawers Right</p>	 <p>Alki Spa 30" Vanity, No Side Drawers</p>
 <p>Alki Spa 36" Vanity, Drawers Left</p>	 <p>Alki Spa 36" Vanity, Drawers Right</p>	 <p>Alki Spa 36" Vanity, No Side Drawers</p>	 <p>Alki Spa 42" Vanity</p>	 <p>Alki Spa 48" Vanity</p>	 <p>Alki Spa 60" Vanity, Center Basin</p>

Design Your Own Vanity Tool

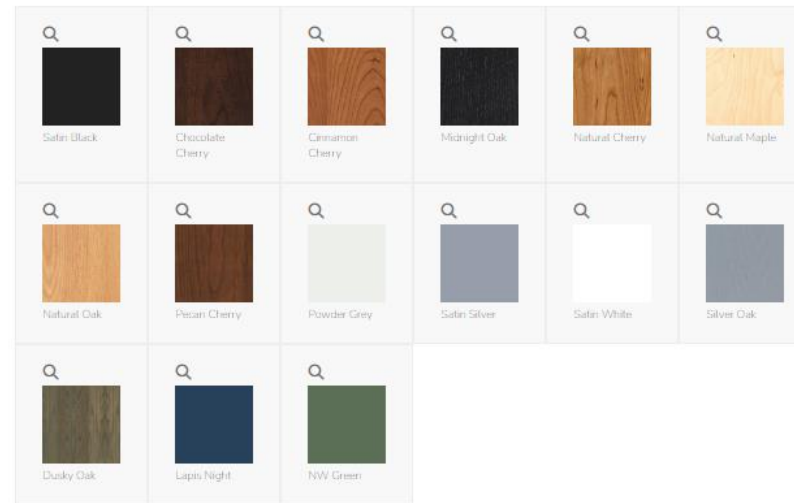
Select Door/Drawer Frame Styles



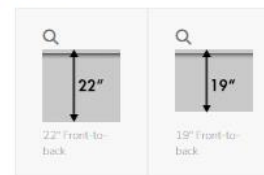
Select Mirror Size & Frame



Select Finish

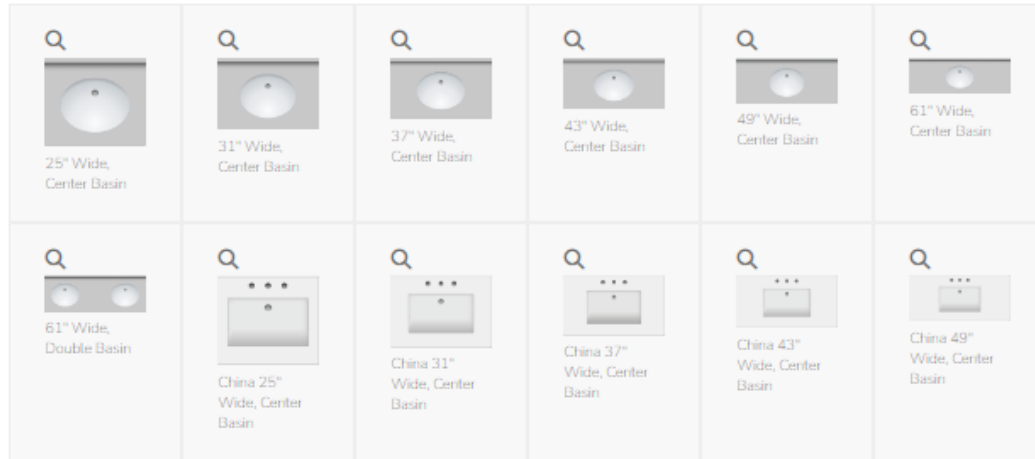


Front to Back

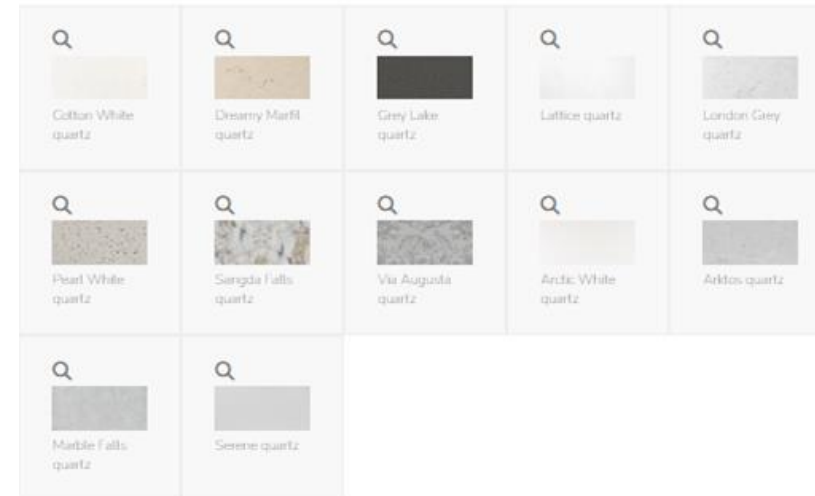


Design Your Own Vanity Tool

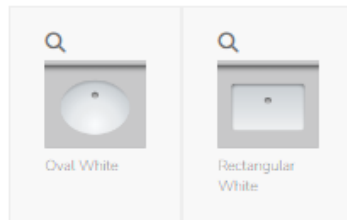
Width



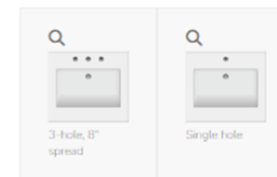
Stone Finish



Basin



Faucet Holes



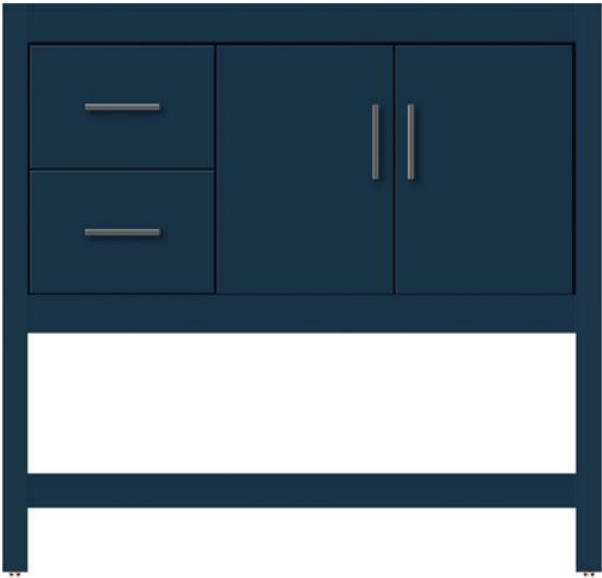
Design Your Own Vanity Tool

BATHROOM VANITIES & CABINETS ▾ INSTALLATION & CARE ▾ INSPIRATION ▾ SHOWROOMS IN THE NEWS ▾ ABOUT ▾ CHRISTOPHER GRUBB COLLECTION

36" Wide Alki Spa Slab Lapis Night Vanity, Drawers Left

Item # 58-210 21" Depth
Item # 58-209 18 ½" Depth

[Print Result](#) [Email Result](#)



The image shows a dark blue vanity cabinet. It features two drawers on the left side, each with a horizontal silver handle. To the right of the drawers are two cabinet doors, each with a vertical silver handle. The vanity is supported by a dark blue frame with a horizontal bar across the middle and four legs. The background is white.

2024 Price Book

- A new price book came out in March 2023- make sure you are using the version with the green vanity on the cover
- Items are sorted by Collection (alphabetically) then grouped by door style
- Wall Elements, hardware and vanity tops are listed in the back of the book
- Resources such as Warranty information, how to place a Benjamin Moore Color order and recently discontinued items can be found on the last few pages.



Complementary Products

Medicine Cabinets



Complementary Products

Bluetooth Mirrors & Standard Mirrors



FRAME PROFILES



Complementary Products

Cubbies & Over Johns



Complementary Products

Hardware

- No Drill
- Drill with no Hardware
- Installed Hardware

Offered at no charge



Vanity Tops

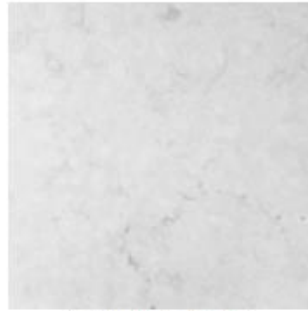
QUARTZ FINISHES (3 CM)



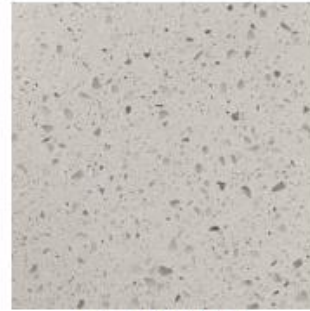
Lattice



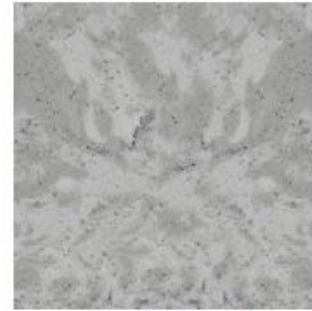
Cotton White



London Grey



Pearl White



Via Augusta



Grey Lake

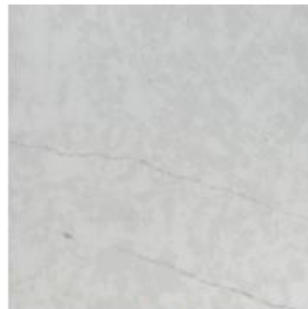
QUARTZ FINISHES (2 CM)



Serene



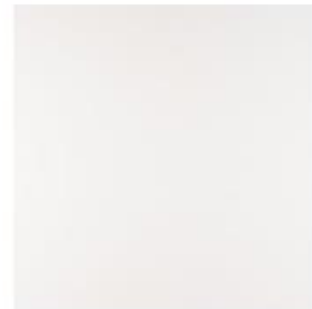
Haida



Marble Falls



Arktos



Arctic White

Resources

Benjamin Moore Color Palette



STRASSER

Strasser now offers a
Benjamin Moore Color Palette!

Customize your Strasser Vanity by choosing
a Benjamin Moore color.

- Pricing is 20% up charge over the White Strasser finish
- Order a sample of the color – each sample is \$100 each, which is credited when the vanity is ordered
- Each sample is good for 60 days, multiple samples can be ordered
- Approximately 2-week lead time for the sample and 4-week lead time for the vanity once approved
- **Excluded from Program:** Benjamin Moore White Color family (see the Benjamin Moore website)



STRASSER
Established 1982

Resources

Selection Center



Introducing Strasser's Selection Center: The Ideal Tool for Showroom Sales

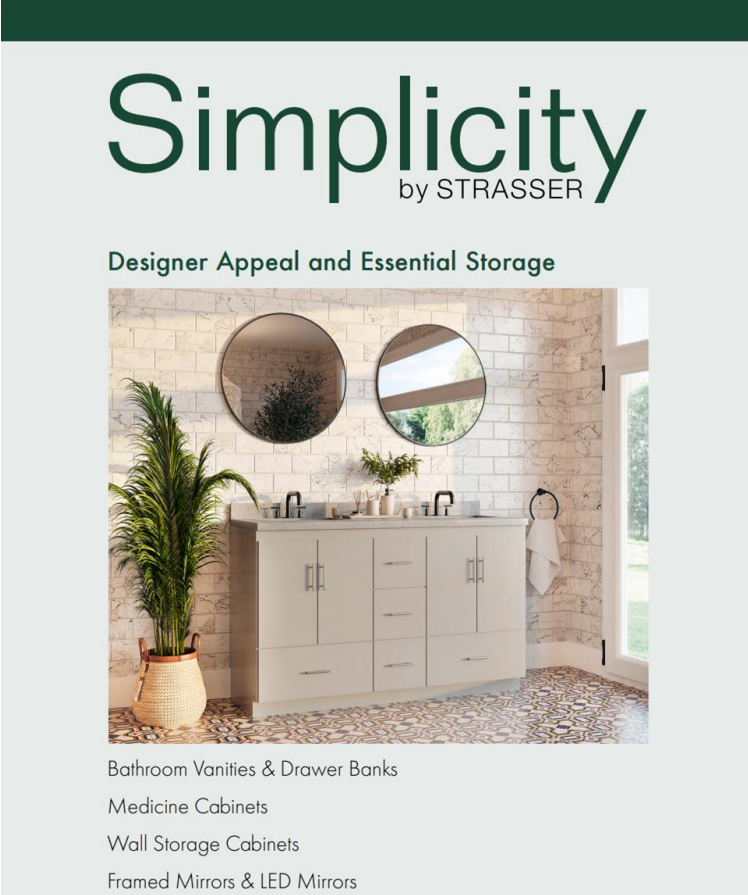
The new selection center will help customers to visualize their design with physical samples that they can feel and explore various combinations. The beautiful Strasser Newhalem Linen Cabinet in Rich Pecan Cherry or NW Green includes door, finish and countertop samples as well as decorative hardware.

Order today at orders@strasserwood.com!

Selection Center Dimensions: 21"W x 18"D x 71"H
Item #K0023 (Pecan Cherry) or #K0024 (NW Green)
List \$4,800 Display Cost \$1,200


Resources

Simplicity Collection



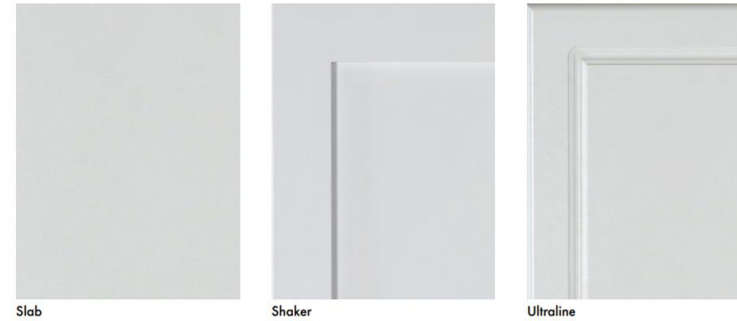
Simplicity
by STRASSER

Designer Appeal and Essential Storage



Bathroom Vanities & Drawer Banks
Medicine Cabinets
Wall Storage Cabinets
Framed Mirrors & LED Mirrors

Styles

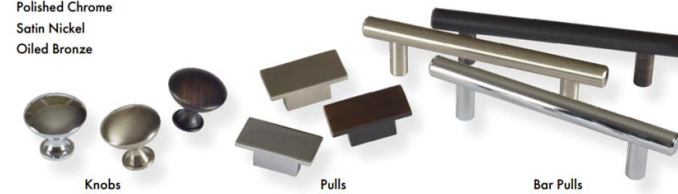


Finishes



Hardware Choices

Polished Chrome
Satin Nickel
Oiled Bronze



Resources

Social Media

Follow us for the newest trends & company updates!
Tagging us in install pictures is always appreciated 😊



@strasser_wood



STRASSER



AD

Together, we win.



Decorative Plumbing + Hardware Association



SpecBooks

Support

The STRASSER Team

STRASSER MAIN INFORMATION

Phone

800-445-0494

Fax

800-788-2047

Purchase Orders

orders@strasserwood.com

Customer Service

service@strasserwood.com

Address

14237 NE 200th Street
PO Box 446
Woodinville, WA 98072

STRASSER CUSTOMER SERVICE TEAM

Sean Kristek (CSR)

ext 102

seank@strasserwood.com

Morgan Hunter (CSR)

ext 104

morganh@strasserwood.com

Brad Kiel (NSM)

bradk@strasserwood.com

ACCOUNTING

June Sherwood

ext 114

junes@strasserwood.com

הדות.

Mh'gōi

arigatō

danke

nandri

takk

grazie

hvala

감사합니다

gracias

dziękuję

děkuji

kiitos

Xièxiè

спасибо

a dank

ευχαριστώ

dank u

mahalo

gràcies

Thank you

благодаря

köszönöm

tack

Շնորհակալություն

tak

ngiyabonga

choukrane

obrigado

Dakujem

Баярлалаа

diolch

blagodaram

merci

Дякую

ačiū

teşekkür ederim

dhanyavād

faleminderit

shukran

dankie

grazzi

mulțumesc

terima kasih