

Specification Sheets for Wall Storage

SPECIFICATION VARIANCES

Dimensions on finished vanities may vary slightly from those shown on these specification sheets due to variability in construction materials.

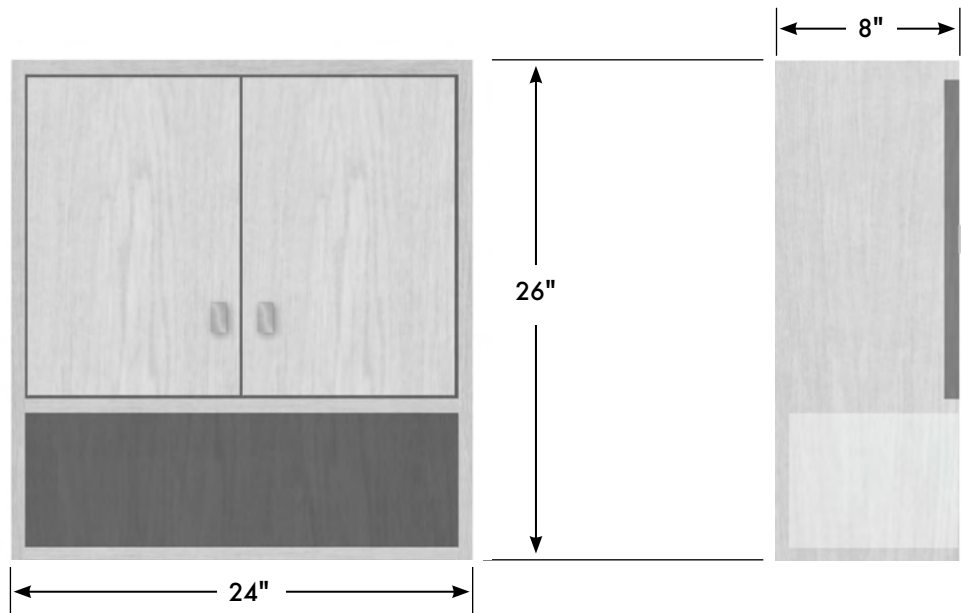
Our products are engineered to maintain close dimensional tolerances but variability in manufacturing materials can change dimensions slightly (normally within $\pm 1/8$ " but occasionally up to $\pm 3/16$ ").

In most applications these slight variations will have no impact upon installation, appearance or function. However, when planning and finishing a space for a built in vanity, **do not frame or finish the space before measuring the actual cabinet!**

We can not be responsible for any expenses incurred as a result of the end user or contractor not following this guideline.

STRASSER

Specifications:
24" Contemporary Overjohn



1 adjustable position shelf behind the doors; 3/4" material finished to match the cabinet.

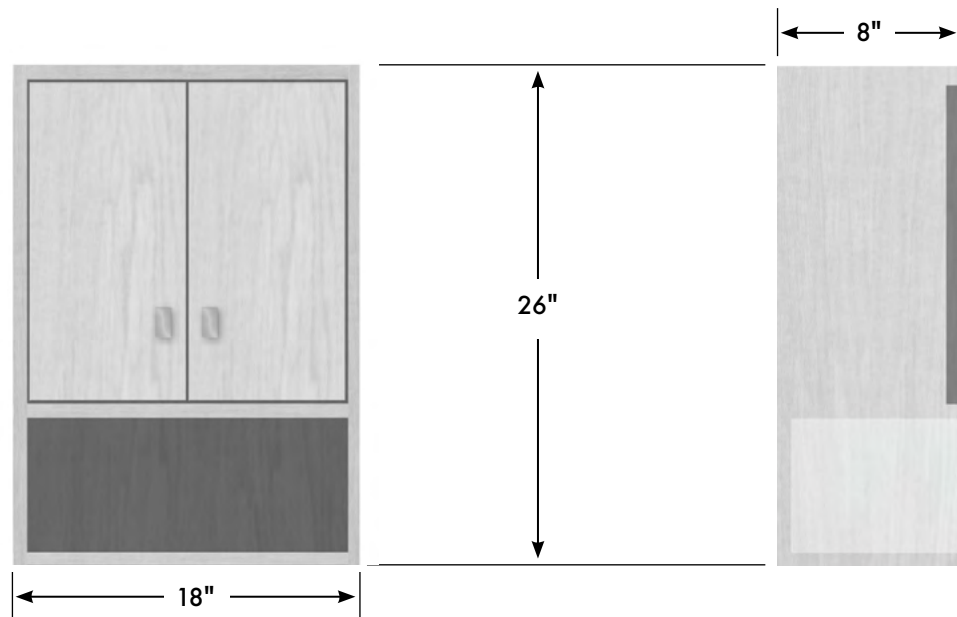
24" Contemporary Overjohn

29" wide
26" tall
8" front-to-back



STRASSER

Specifications:
18" Contemporary Overjohn



1 adjustable position shelf behind the doors; $\frac{3}{4}$ " material finished to match the cabinet.

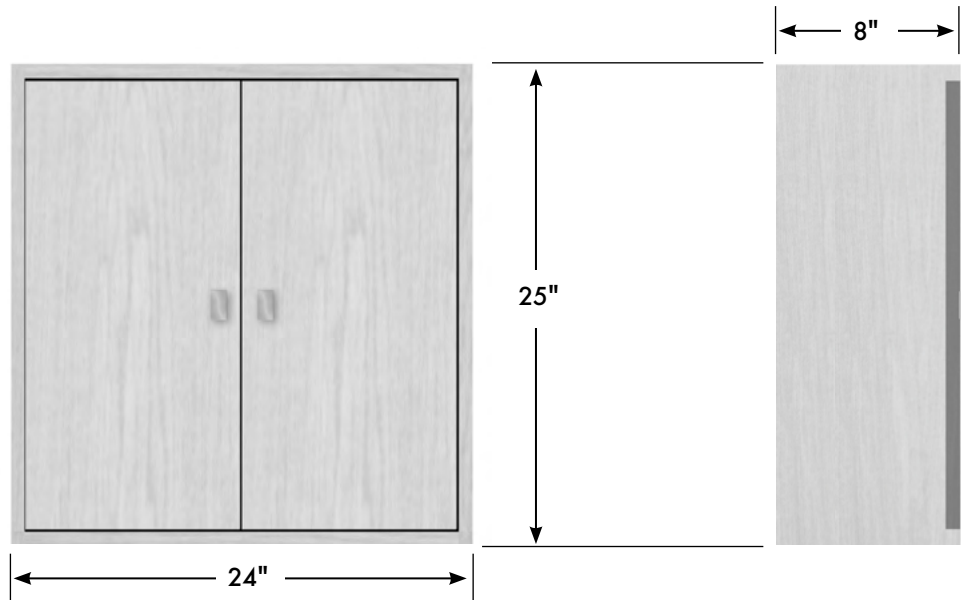
18" Contemporary Overjohn

18" wide
26" tall
8" front-to-back



STRASSER

Specifications:
24" Contemporary Cubby



2 adjustable position shelves; 3/8" thick frosted acrylic, radiused front edge.

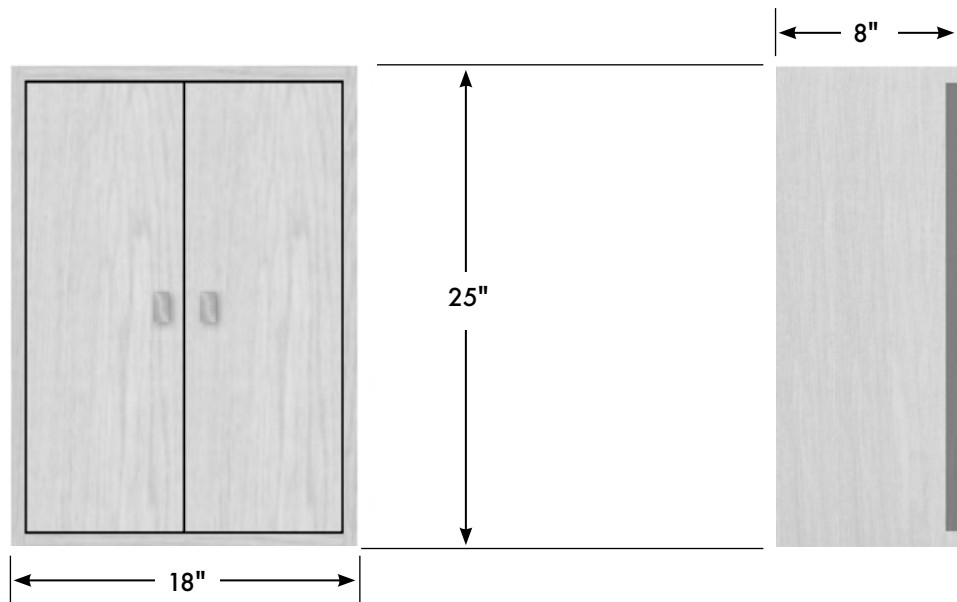
24" Contemporary Cubby

24" wide
25" tall
8" front-to-back



STRASSER

Specifications:
18" Contemporary Cubby



2 adjustable position shelves; 3/8" thick frosted acrylic, radiused front edge.

18" Contemporary Cubby
18" wide
25" tall
8" front-to-back



STRASSER

Specifications:
18" Contemporary TALL Cubby

2 adjustable position shelves each compartment (4 total); 3/8" thick frosted acrylic, radiused front edge.

18" Contemporary Cubby
TALL Version
18" wide
48" tall
8" front-to-back

